

## Where state taxes go

— see below

## K of C Awards pictures

— see page 3

## Ruffalo takes silver in Holland

— see page 11

# Belleville Times

Serving Belleville Since 1909

35¢

81st Year No. 33

An Orechio Publication

Thursday, August 2, 1990



PHASE ONE RENOVATION COMPLETED - Essex County Executive Nicholas R. Amato was on hand to open the newly renovated clubhouse at Hendricks Field Golf Course in Belleville. The building represents the first phase of a \$1.3 million renovation for the golf course. Cutting the ribbon, from left, Carmine E. Capone, Director of the County Dept. of Parks, Recreation and Cultural Affairs, Thomas D'Alesio, County Sheriff, County Executive Amato and Freeholder Arthur Clay.

## Hendricks Field golf course renovation has beautiful new features for duffers

By Steve Politi

For over 60 years Hendricks Field Golf Course, considered to be one of the most heavily used in the East, has been open to Essex County residents.

Recently, \$639,450 dollars went in to the renovation of the clubhouse and course in the first phase of a three-year, 1.3 million dollar project designed to make an already inexpensive and convenient place to play golf even better.

Several county officials, including County Executive Nicholas Amato, 4th Ward Councilman William Cook, Essex Freeholder

Arthur Clay, and many other officials were on hand to last Wednesday to celebrate the ribbon-cutting ceremony.

"By investing \$1.3 million, we are generating an addition of \$2 million, which more than offsets the cost of the course's financing," Clay explained.

The new clubhouse features a covered veranda overlooking the 18th fairway. The renovation of the existing clubhouse includes new heating, windows, a roof, toilets, showers, a locker room, a luncheonette, and a lounge. A maintenance building was constructed to house golf carts.

The exterior of the building was beautified by the addition of new landscaping. The course itself received a much needed irrigation system that will particularly help the 16th and 17th holes, and awaits the next phase of the project that will improve putting surfaces and fairways.

Amato praised Carmine E. Capone, the director of the County Department of Parks, Recreation and Cultural Affairs, for his help in getting the renovations started.

"No question there will be an increase in people playing this course," Capone explained. "We experienced that with (Francis) Byrne (in West Orange). As soon as the construction was completed, it was rated as one of the top ten courses in the county, and play increased."

## Cap at \$750 is out the window

## Council passes new salaries

By Anthony Buccino

A crowd of citizens overflowed the township council chambers Tuesday night at the third council meeting of the month. Residents questioned the agenda adopted by the council in their by-laws which does not allow for public participation or scrutiny of resolutions before they are adopted by the council.

The council adopted their salary ordinance which set the mayor's salary at \$4,000, the deputy mayor's salary at \$3,750 and the council member's salaries at \$3,500. Council members Frank Caputo, Mario Drozdz and Thomas Spillane voted against the ordinance, but were outvoted by Mayor Marina Perna, and council members William Cook, Jim Messina, Frank Noonan and Mayor Perna.

Joseph Celfo, president of the Concerned Citizens of Belleville, said, "Most of you people pledged to do it for \$750 cap." He told the council they are "starting off on the

wrong foot."

Mayor Perna said the council looked at other towns to see what they did, some of the council members may return the money to the town. The salary, Perna said, "is justified and well-deserved."

Township attorney Vincent Nuzzi said he advised the council that expense accounts were not legal and they should use their salary for their incidentals such as various social affairs.

"You need your credibility more than you need your salaries," said Gabe Nazzola, a former candidate for the council. "I urge you to reconsider your positions. This issue of credibility looms very large with these people."

"I don't think it's a question of credibility," Perna said.

The administrative code setting the policies and procedures for the township government management under the new council form of government was passed unanimously after an attempt to amend the township manager's authority over the township clerk's office from supervisor to administrative failed.

Council members Messina, Cook and Drozdz voted in favor of the amendment, but were outvoted by Caputo, Noonan, Spillane and Perna.

Under the authority of the new administrative code, the council reapportioned tax assessor Thomas Salzano to a four year term.

Under the new administrative code, the council established and re-established various advisory boards and councils.

The township council appointed the following members to the Zoning

Board of Adjustment: Raffaela Saulino, 141 Heckel St., 4-year term; Joseph C. DeVivo III, 22 Laurel Ct., 3-year term; Alois E. Schmitt, 61 Hill St., 3-year term; Thomas A. Fuscaldo, 23 Riverdale Ave., 2-year term; Joseph Landolfi, 436 Greylock Pkwy., 2-year term; Richard Luzzi, 64 Bell St., 1-year term; Thaddeus J. Rajnes, 62 Lloyd Place, 1-year term. Otto G. Albanese, 57 Wilber St. was appointed as an alternate for a 2-year term; Frank Borgo, 180 Cedar Hill Ave., for a 1-year term. Saulino, Schmitt and Fuscaldo are holdovers.

The township council appointed the following as Class IV members of the Planning Board: Perry B. Mayers, 37 Dawson St., 4-year term; Charles Cerami, 2 Morse Place, 4-year term; Rick Dombrowski, 441 DeWitt St., 3-year term; James D. Hoogenyck, 12 Jerome Ave., 3-year term; Al Nappi, 4 Riverdale Ave., 2-year term; Sebastian (Sam) Papa Jr., 19 Belmont Ave., 1-year term. Joseph Doyle, 314 Greylock Pkwy., will serve a 2-year term as an alternate member, and Alois Schmitt, will serve a 1-year term. Doyle and Schmitt served on the prior planning board.

The council appointed to the Rent Leveling Board the following members: For two year terms: John Frade, 448 Joramelon St.; Louis Graziano, 278 Greylock Pkwy.; Sam Graziano, 70 Chestnut St.; Viola Spray, 28 Tremont Ave. For 1-year terms: Edith DeFiso, 31 Mt. Prospect Ave., Richard Montecuccolo, 2 Bremond St. and William

(continued on page 5)

## Board of Ed names two vice principals

Two Belleville High School educators were appointed as vice principals in the middle and high schools at the Board of Education meeting Monday night. The full board's approval was unanimous.

The vice principals' were made although their salaries remained to be determined through negotiations.

Joseph Petrillo, a social studies teacher, was appointed vice principal at the high school. He will start his new year-round position September 1 upon the retirement of George Nucera. Petrillo began teaching in Belleville in 1972 in what was then the junior high school. He had taught in another school district four years before coming to Belleville.

Rocco Cafone, a senior guidance counselor, was appointed vice principal at the middle school effective Sept. 1. This is a ten-month administrative position. Cafone fills the vacuum created when middle school vice principal Frank Catrambone was promoted to principal of School 5. Cafone has 28 years in education, 20 of those years in the Belleville school district. He taught business for six years before his appointment as a guidance counselor.

The board also appointed seven teachers to fill open positions. "Not one new position was created," School Superintendent Michael Nardiello said.

The new teachers' salaries ranged from \$22,470 to \$22,970, based on the 1989-90 salary guide. Figures for the new school year have not been set.

Assigned to Belleville Middle School were George Droste, math-

enatics teacher, and Margaret Barton, special education teacher.

Two other special education teachers were hired, Anne Ferreira and Lauren Cooper. Ferreira will work at School 8, Cooper has not yet been assigned a specific school.

Cathie Tedesco was appointed to teach English as a Second Language. Suzanne Taylor, will teach English at the high school. Lisa Borgo was appointed as an elementary teacher at School 9. Except for the Borgo appointment (6-0) in which Trustee Seymour Grossman took no part, all board appointments were unanimous 7-0.

In other board business, Nardiello said the board intends to meet with members of the town council to try to iron out the township's cuts to the school budget. A settlement conference has been scheduled August 13 when representatives of both parties will meet with Judge Stephen Weiss.

Nardiello said the groups have up until the settlement conference to resolve the cuts on their own. The former township commissioners had met with school board representatives and both parties had agreed to cut the \$25 million budget by \$210,000.

At the next town meeting, the commissioners voted 3-1 in favor of cutting the school budget \$1,043,527, instead of the agreed upon \$210,000. The school board has appealed the commissioners' decision.

The school's \$19,321,532 current expense tax levy was defeated by 33 votes April 24.

By Anthony Buccino

## Where Florio's state taxes go

### Part I — State Revenues

By Russell Roemmle

Governor Jim Florio has gotten his way — he has imposed the biggest single tax increase in state history.

Three former governors of New Jersey — Hughes, Cahill and Byrne — each of whom had previously pushed through their huge new or expanded taxes lauded Florio as "courageous" in raising taxes.

Florio's predecessor, Tom Kean, questioned whether Florio had bitten off a little too much tax for the public to chew.

Naturally, Kean nor Hughes nor Cahill nor Byrne mentioned — or dared to mention — that it may have been even more valiant for Florio to have cut state spending, instead of raising it; to have reduced the number of state employees instead of hiring more of them; and to have resisted special-interest lobbying groups who always want more and more of other people's income.

Kean, Hughes, Cahill and Byrne obviously would not embarrass Florio with a conservative fiscal policy: slashing state spending. How could they? Each of the four had themselves set record budgets during their administrations. To carp at Florio's spending, then,

would be as if they're looking in the mirror.

**Extensive opposition to taxes**

Despite almost 100 percent media support for his tax increases — a few newspapers disagreed with the Florio plan in that the editorialists wanted still higher taxes or wanted them directed at, as usual, "the rich" — it is obvious Florio's taxes have incited the most intense and extensive tax revolt in New Jersey since the 1930s, when folks revolted against higher federal and state impositions to pay for vast public works programs instituted to produce public jobs during the Depression.

Yet, if many folks are angry with the Florio Administration over taxes, few of the critics have pointed to the governor's budget itself. Exactly, how can Florio or any governor be expected to pay for literally thousands of state programs and an ever increasing state bureaucracy, without raising taxes? The present opposition to taxes, while angry and growing, is unfocused. Florio's tax opponents have been heard to argue for taxes "on the other guy"; so far, they have not agreed upon an agenda of specific state spending (appropriations) that they would eliminate or reduce. It is the hope of this writer to

center on the state budget itself in this series, to underline specific line items that have been costly and will continue to be, unless government ceases to be all things to everyone for as many votes as it takes to get elected... no matter the cost.

**Sales tax takes the most**

The budget has two basic elements, revenues (essentially taxes) and spending (essentially on programs but also on debt service on state bonds).

Let us begin with the budget originally proposed resources. Note that, even before the recent increase from six to seven percent, the biggest revenue source for the Florio Administration had been the state sales tax.

With the sales tax now at seven percent, this state revenue source, as compared with revenue from the personal income tax and the corporation taxes, has advanced markedly higher.

Moreover, except for unmarried (single) persons with income above \$35,000, the big increases in the personal income tax afflict those with relatively high annual incomes (\$100,000 or so).

Therefore, the burden of the Florio taxes has harmed mostly families with lower or middle incomes — especially young families who make substantially more purchases than do older families — than those families with six-figure

annual incomes. Florio says his program has helped the middle-class; it has done no such thing. His emphasis on the sales tax — a regressive tax — belies his words.

**The lottery tax**

Rich folks do not play the state lottery, as a rule. So the \$1,289 billion in expected income from lottery players are, in simple economic, a "hidden" tax on the lower and middle income groups.

The issue here is not moral: the right or the wrong of gambling. The issue is that many folks who cannot afford the fun and the dream of lottery playing are doing so or doing so too much. The lottery money is going to the state for its spending purposes, however noble. Overwhelmingly, lottery players have only the fun and the dreams — minus their dollars.

**The state slot machine**

Most folks are unaware that casino revenue — a tax, of course — derives from the total play and not from the profits made at the casinos. This hefty tax is among the few in the entire nation guaranteed off the top. It is not unlike the gangster or petty hood who took his cut of the pot with the roll of the dice, not from seven-from-heaven or from snake-eyes.

After heavy administration costs

(Continued on page 3)

## Belleville POLICE BEAT

A 16-year-old Belleville juvenile was arrested July 23 after she had reportedly been seen leaving a Cortlandt St. apartment with a purse. The purse contained assorted jewelry valued at \$100. The youth was released to her mother. The investigation is being handled by the juvenile bureau.

Police charged Rocco K. Benedetto, 19, of Belleville, with possession of marijuana and possession of drug paraphernalia. Police were called to an address at Washington and Malone aves. following a report of a loud group shortly before 9:30 July 23. When police arrived at the scene, they observed the suspect throwing something into nearby bushes where they recovered two plastic bags of greenish brown vegetative substance. Prior to placing the suspect into the squad car, police also discovered rolling papers. Benedetto was released on his own recognizance.

Bernard Newfield, 56, of Franklin, PA, was arrested July 28 at 6:54 p.m. and charged with possession of marijuana and drug paraphernalia. Police observed and stopped a suspicious vehicle on Charles St. While speaking with the driver,

Thursday, August 2, 1990  
police noticed a partially burned marijuana cigarette. The suspect was asked to step from the car and placed under arrest. During a search incidental to arrest, police discovered a plastic bag containing what was believed to be marijuana in the suspect's back pocket. At police headquarters, the suspect was charged and released on his own recognizance.

A resident reported that two hispanic youths attempted to steal two bicycles from an alley on Magdolna St. shortly after midnight July 24. The resident pursued both youths who left the bikes behind and fled on foot.

Belleville police arrested Walter Henry Roberts Jr., 24, of Kearny, at 6 a.m. July 28. Roberts was being sought by Kearny police for terrorist threats. He was turned over to Kearny police authorities.

An unlicensed 17-year-old Belleville juvenile was issued four summons July 29 following an accident at 10:30 p.m. on Brighton Ave. The youth had left the scene of an accident and was operating the vehicle with a learner's permit. He was released to his grandmother.

Two motor vehicle thefts were reported on Brighton Ave., one on July 24 and one July 26. Another car was reported stolen July 26 on Wilson Place.

Note: Police Beat is only a representative sample of police calls in Belleville. The department responds hundreds of calls each week and it would be impractical to list every call.

### Tribuna honored for safe driving

Gerald Tribuna of Belleville was recently honored by New Jersey Transit for 20 years of safe driving for the statewide transit agency.

"New Jersey Transit takes the safe operation of our public trans-

portation network very seriously, and the care with which these (safe drivers) operate their buses is indicative of the pride they have in their work," said George Warrington, Acting Director of NJ Transit.

### An Orechio Publication

## M. Morrison appointed VP

Mary Morrison has been appointed senior vice president of patient services at Clara Maass Medical Center.

Morrison previously held the position of vice president of nursing at the Medical Center. In her expanded role, Morrison is responsible for Nursing Services, Same Day Services, Communications and Staff Development and Out-patient Oncology.

A graduate of Misericordia Hospital School of Nursing, she holds a bachelor of science degree from Pace University and a master of arts in nursing administration from Columbia University.

"Mrs. Morrison's appointment is in response to the changing and expanding role she has assumed, as well as that of nursing in our society



Mary Morrison

and within our Medical Center complex," said Robert S. Curtis, president and CEO of Clara Maass Medical Center.

Morrison resides in Bronxville, New York with her husband and daughter.

## Medical pavilion services with state of the art MRI

A medical office building designed to accommodate 20 physicians' offices and a diagnostic imaging center featuring a Magnetic Resonance Imaging (MRI) system was recently opened at Clara Maass Medical Center.

The Premium Medical Pavilion, a 50,000 square foot medical office building, is a project of premium Health Systems Inc., a subsidiary of JerseyCare and an affiliate of Clara Maass Medical Center. The state-of-the-art building also features the Clara Maass Medical Oncology Treatment Center for outpatients.

The exterior of the three-story building, constructed of red brick and glass, echoes the features found in other buildings on the Medical Center's campus.

"The modern facilities of the new medical office building will increase and enhance the care which Clara Maass Medical Center is able to provide to the surrounding communities," said Robert Curtis, president and CEO of Clara Maass Medical Center.

On the third floor of the medical pavilion is the Clara Maass Medical Center medical oncology out-patient treatment center, featuring an in-house pharmacy and the offices of James Orsini, M.D., and Michael Scoppetto, Jr., M.D.

Located on the first floor is the

outpatient Progressive Imaging Center. The outpatient Imaging Center has an array of state-of-the-art imaging modalities such as low dose mammography, CT Scanning, Ultrasound with color doppler, diagnostic x-ray with low dose system and magnetic Resonance Imaging (MRI).

The desire to provide the most information at the least possible risk to patients motivated medical researchers to develop Magnetic Resonance Imaging. Unlike x-rays, which use small doses of radiation to produce images of internal body structures, MRI produces its images by combining a strong magnetic field with radio waves. But while its images are dramatic, there is little discomfort or pain connected with this examination.

MRI is the modality of choice in many areas of the body for faster diagnosis. Imaging/Therapeutic Services.

Physicians' offices are located throughout the medical building. A glass-enclosed second floor-level skywalk connects the new building with the Medical Center. Adjacent to the medical pavilion is the new parking deck, which provides parking spaces for patients, staff, and visitors.

A dedication ceremony is planned for the fall.

## Crecco bill addresses illiteracy

Assemblywoman Marion Crecco (R-Essex) has introduced a bill that would develop a program to help illiterate adults learn how to read and write.

The bill creates the New Jersey Adult Literacy Partnership Program as a joint venture between the state's education, Commerce and Economic Development and Labor departments.

"The U.S. Department of Education has estimated that there are approximately 27 million people in the country who are functionally illiterate," said Crecco. "There are between 700,000 and one million

estimated illiterate adults in New Jersey."

Crecco stated that the bill establishes a partnership between the state and private sector to coordinate the services provided by the state operated literacy programs. She explained that several companies such as New Jersey Bell, AT&T, IBM, and K-Mart are already currently involved with literacy initiatives.

The bill, A-1296, is under consideration in the Assembly Education Committee.

## Golden Comments

By Jim Golden

Back in 1935-36 when Social Security first came into being, President FDR proclaimed that Social Security benefits would NEVER become taxable... and they never were... that is until greedy Ronald Reagan got himself elected President with the help of his wealthy friends who benefited by his lowering taxes for corporations and the rich. To compensate for these lost revenues "the great communicator" summoned in several of his friendly rich corporate friends to form a committee to STUDY a formula to increase income by taxing in some form Social Security income... which they did under the formula in existence today.

Taxes on Social Security benefits are currently as follows: To adjusted gross income, the taxpayer adds one half of benefits received plus all tax exempt interest income. If that sum exceeds the income threshold of \$25,000 for a single person or \$32,000 for a couple, then 50 percent of the amount exceeding the threshold is taxed at the taxpayer's maximum rate. Alternatively, the taxpayer may apply that rate to one half of benefits if there is a savings in doing so.

A battle looms over higher taxes or cutbacks in popular programs like Social Security and Medicare — and the prospect of a seniors' rebellion may make it impossible to hold other groups' feet to the fire. That in turn could lead to a deficit-cutting deal that falls far short of ambitious goals set by the administration and Congress.

Shoer numbers suggest one reason the aged will carry clout: America's senior citizens number about 33 million, and they're as likely to go to the polls next November as Moslems are to visit Mecca. And figuring out how to turn the elderly to cut the deficit is proving a herculean task. To both lawmakers and the elderly, the top options hold all the appeal of castor oil: Cutting or eliminating next year's cost-of-living adjustment (COLA) in Social Security checks, hiking taxes on benefits and raising the medicare premiums that the aged pay for doctors' services.

In their quest to find \$50 billion in savings and taxes for fiscal 1991 — about \$10 billion of that from

large entitlement programs — lawmakers also face a miserable political trade-off. Measures that would raise big bucks would badly affect broad segments of the elderly, including many seniors of modest means. Yet targeting cuts on the better-off aged means taking on some formidable opponents: The same aggressive group whose objection to higher taxes forced Congress to kill medicare's catastrophic coverage program last year.

AARP, with its 30 million members, has already signaled intense opposition to a COLA cut. And the 5-million member National Committee to Preserve Social Security and Medicare, which spearheaded the fight against catastrophic care, has vowed to fight higher taxes on Social Security benefits, partly because one result could be steep tax rates on better-off elderly.

The toughest job for the administration and congressional negotiators may be tackling Social Security. That's in large part because of a dirty big secret: Technically off-budget and self-financed entirely by payroll taxes, the roughly \$250 billion program isn't driving up the federal budget deficit. Rather, it is building up massive reserves in its trust funds to help finance the eventual retirement of the baby-boom generation. Included in deficit calculations under Gramm-Rudman-Hollings law, the reserves are actually masking part of the overall operating deficit, sheltering \$66 billion of the actual \$200 billion gap this fiscal year. Because the reserves are also invested in billions of dollars worth of Treasury securities, they are effectively being borrowed to help finance the deficit.

The elderly must fight back to halt several problems with some discussed plans such as steering new revenues to the general fund which might be seen as a betrayal of promises that the proceeds of benefits taxes would go only toward Social Security. Moreover, because higher levies on benefits could piggyback onto other taxes, they could trigger steep "marginal" rates on the elderly for the rates on their last dollars of income ranging as high as 42% to 79%.

## Needed: Friends of the Safe House

The Safe House, a shelter for victims of domestic violence and one of only two shelters serving Essex County, needs your help.

Join WWOR-TV's Renee Hambley, host of "9 Broadcast Plaza," and others who have become Friends of the Safe House. With your contribution, a difference can be made.

Since its inception in 1986, the

emergency shelter for victims of domestic violence has processed well over 9,000 calls. Through donor's generosity, The Safe House will be able to provide more staff and expanded services to better serve its residents. Contributions are tax deductible.

Join Friends of The Safe House today. Call 450-2277. After all, what are friends for?

## Are you ready for some real action?

### Join Boy Scouting

For boys 6th - 9th grade  
Call 622-2488  
Monday 9:00AM Friday 4:30PM



## Quality Shoe & Handbag Repairs

Most Work Done  
While You Wait!

Plaza Bootery

Where It's Always Observed  
483 Franklin Ave., Nutley  
667-8964

## Meyer's

Cafe - Restaurant

Have Your Next Affair

In Our Brand New Dining Room

• Graduations • Meetings

• Showers • Birthdays • Funerals

Sunday Buffets

227 Franklin Ave. • Nutley

667-8587

**It's time for an insurance check-up**  
WE COVER PERSONAL WATERCRAFT  
Jet Skis - Boats - Wave Runners, etc.  
Life - Motorcycle - Homeowners  
Condo - Renters - Business  
Auto Protection

**TROISE INSURANCE AGENCY**  
"WHERE QUALITY COVERAGE COUNTS"  
172 Washington Avenue, Belleville  
Mon. - Fri. 9 AM - 5:30 PM • Sat. 9 AM - 12:30 PM 759-4100  
Member Belleville Chamber of Commerce

**COMPLETE  
CHIROPRACTIC CARE**

**BLOOMFIELD  
CHIROPRACTIC  
CENTER**

Dr. Susan M. Guarino D.C.  
Has Been Caring  
For Your Family's  
Spinal Health Care  
For Over 10 Years

**759-3600**

**858 JORALEMON ST., BELLEVILLE, NJ**

We've got you covered!

## SECURITY BLANKET LOAN ACCOUNT

The overdraft protection personal loan  
you can really feel secure with...



**SECURITY NATIONAL BANK  
& TRUST COMPANY**  
OF NEW JERSEY

213 Harrison Street, Nutley, NJ 07110

661-5110

431 Kingsland Street, Nutley, NJ 07110

661-5121

Bank and Halsey Streets, Newark, NJ 07102

643-6700

Apply now for this personal overdraft protection and personal line of credit even if you don't own a home. Borrow anywhere from \$1,500 to \$5,000 by simply writing a check. No application fee, no annual fees. You will know in 24 hours if you have been approved.

Just stop in and fill out an application and we will do the rest. If you already have a regular checking account with us, there is no need for new checks or account numbers. It's easy to have your own Security Blanket at Security National Bank & Trust Company of New Jersey.



# Knights of Columbus Awards Night



**FLAG OF OUR COUNTRY, WHAT IT MEANS TO ME** - Essay winner Keith Davoric is congratulated by Grand Knight Richard Glogoza and Bruce Morgan.



**CAMP FATIMA PRESENTATION** - Grand Knight Richard Glogoza looks on as Sister Mary Ann (center) accepts a Knights of Columbus check for \$3,226.50 for Camp Fatima from Peggy Dimico.



**ESSAY WINNER** - Anaisa Rodriguez received an award for her essay from Grand Knight Richard Glogoza and Youth Director Bruce Morgan.

The Belleville Knights of Columbus Council 835 held an awards night recently to recognize local youths and presented \$9,178 to worthwhile local charities. More than 150 people, including town Council members Mario Drozd, Tom Spillane, Jim Messina and Bill Cook, attended the event.

Master of ceremonies Grand Knight Richard Glogoza introduced guest speaker Kathy DiFiore of Several Sources Shelter in Ramsey.

Knights' Youth Director Bruce Morgan presented awards to student winners of Knights contests.

Eighth grader Keith Davoric and tenth grader Colleen Coppola were recognized for winning a Knights essay contest. Eighth grader Bridget Dzendera and Anaisa Rodriguez were the Spelling Bee winners.

John Florio took the local Free Throw contest. He also went on to win the district finals and place second in the state finals. Daniel Broda and Carrie Engdall also placed first in the district. Broda took second in the state finals. Other winners in the local Free Throw competition were Kristen Trainer, Robert Guancione, Stacy DiMaio and Tom Danucci.

A special award was presented to Eagle Scout Vincent Nucci.

**RETARDED DRIVE** chairman Frank Corbo presented monetary awards to the following organizations: Mal Condon Canteen, \$1,200; S.E.P.P.O., \$1,000; Boy Scout Troop 364, \$1,200; Camp Fatima, \$3,226.50; West Essex Rehab, \$3,226.50; and Children's Special Hospital, \$525.00.



**KNIGHTS AWARDS NIGHT** - Amid the awards night revelry, from left, Charles Vitiello, Julie Condon, Pete Mackiewicz and Stephen Van Dyke.



**KNIGHTS' STRATEGISTS** - Always open to new ideas, from left, Grand Knight Richard Glogoza, Gen. Chairman Frank Corbo, Treasurer Joseph Wolf, and Community Activities Director Pete Mackiewicz.



**S.E.P.P.O. RECEIVES CHECK** - The K of C Council 835 presented a \$1,299.00 check to S.E.P.P.O. for special education youths. From left, S.E.P.P.O. vice president Lisa Kistner, S.E.P.P.O. secretary Lee Anna Gutierrez, Joe Ruffalo Jr., Grand Knight Richard Glogoza, and S.E.P.P.O. president Joe Ruffalo.



**HEARTY HANDSHAKE** - Lary Demsey, Scoutmaster of Troop 364 with Knights' Publicity Chairman Pete Mackiewicz.

## Serio noted

Tricia Rene Serio, of Belleville, received a certificate of achievement at Lehigh University and was named to the Dean's List for the spring 1990 semester. To be named to the Dean's List, Serio had to earn a grade point average of 3.5 or better and carry at least 12 hours of courses.

**Food For Thought Deli & Caterers**

July & August Saturday SPECIAL

12 oz. Can Soda w/Purchase of Every Whole Sub

**FREE**

149 Franklin Ave., Nutley  
667-1351  
Open Mon. - Fri. 7:30-6 Sat. 8:30-4

Get the most for your car insurance dollar.

CALL ME!

661-AUTO (2886)  
Anthony Vivinnetto  
GENERAL AGENT  
359 Centre Street  
NUTLEY  
**Allstate**  
Allstate Insurance Company

## \$100. OFF FULL PROGRAM

NEW CLIENTS ONLY

WITH THIS COUPON — EXPIRES 8/11/90  
Valid At Participating Centers

— COMING SOON —

**CHATHAM • HOWELL • BRICKTOWN**

**"Nutri/System is a sure way to lose weight. I lost 83 lbs. and feel 10 years younger."**



"I knew from my first visit to Nutri/System that the program would be effective. Everything about it made sense—great food, caring people I could lean on, light activity, even a maintenance program. They had everything I needed to lose weight and keep it off."

Now, I feel younger than I have in years. If ever there was a sure thing, it was Nutri/System."

Our client, Rebecca Jernigan lost 83 lbs.

Rebecca Jernigan

**NOW OPEN • LIVINGSTON UNION • PARSIPPANY • BEDMINSTER**

**We Succeed Where Diets Fail You.**

**nutri/system**  
weight loss centers

BAYONNE (201) 333-2030	MANAHAWKEN (609) 597-5424	SECAUCUS (201) 392-8933
BEDMINSTER (201) 234-1377	MARLBORO (201) 536-8787	SHREWSBURY (201) 542-3133
CLIFTON (201) 777-2271	MIDDLETOWN (201) 615-0700	SPRINGFIELD (201) 379-5755
E. BRUNSWICK (201) 257-5522	MILLBURN (201) 912-9120	TOMS RIVER (201) 244-7733
EDGEWATER (201) 943-7754	PARSIPPANY (201) 402-5522	UNION (201) 354-0240
EDISON (201) 603-9122	PISCATAWAY (201) 562-9522	WALL (201) 681-7546
EMERSON (201) 967-8880	PLAINSBOBO (609) 799-8288	WAYNE (201) 633-6664
GLEN ROCK (201) 444-0088	RAMSEY (201) 934-0555	WEEHAWKEN (201) 348-1288
LIVINGSTON (201) 535-5800	RIVERDALE (201) 831-8010	W. CALDWELL (201) 226-0295
LYNDHURST (201) 804-8620	ROCHELLE PARK (201) 845-3366	WEST ORANGE (201) 669-1800
	ROCKY HILL (609) 497-0096	

**GRAND OPENING**

**Angela's SHOE REPAIR**

Service While You Wait

- Orthopedic Work •
- Custom Dyeing on Premises •

**WE CARRY A COMPLETE LINE OF MEN'S BOSTONIAN SHOES**

Celebrating our 30th Anniversary  
Serving the Belleville-Nutley area since 1960

**20 Franklin Ave. • Nutley**  
(on the Belleville Line)  
**661-2884**  
Hours: Mon. - Fri. 8 to 6; Sat. 9 - 5.

**N.J.'s Premier Oldies Dance Club & Restaurant**

**H.O.P.**

**"HAPPY HOUR"**  
\$1.50 Bud/Bud Lite Drafts  
THURS. - FRI. 5-7 P.M.  
FRI. ONLY  
PASTA BUFFET

**"LADIES NITE"**  
Every Wednesday  
**FREE ADMISSION**  
Ladies House Drinks  
**\$1.00** 4-11 P.M.

**50's and 60's**

**FRIDAY ROCK 'N' ROLL DANCE PARTY**  
Cruise on down to the H.O.P. early and be a winner of our **FRIDAY GIVE-AWAYS**

**SATURDAY IN PERSON**  
AUG. 4th  
**Vito Balsamo**  
formerly of The Salvations  
Singing "Gloria"

**Tuesday AUG. 7th**  
**SPECIAL EVENT**  
CALL FOR DETAILS  
**V.I.P. LOUNGE**  
**SHIRLEY ALSTON**  
of THE SHIRELLES  
Classic Disco begins at 10pm

**COMING ATTRACTIONS**  
THURS. AUG. 8th  
**ALL DRINKS \$2.00**  
**FREE ADMISSION**  
SAT. AUG. 11th  
**SHIRLEY ALSTON**  
of THE SHIRELLES

**COUPON**

**FREE ADMISSION**  
EVERY THURSDAY AND FRIDAY

**1/2 PRICE - SATURDAY**  
COUPON GOOD UNTIL 10 P.M.  
This Coupon Expires Aug. 31, 1990

Call for DINNER RESERVATIONS • Entertainment •  
DIRECTIONS **748-1331** H-O-T-L-L-I-N-E **429-0076**

6-12 Willow St., Bloomfield — Open Tue.-Fri. 4 pm-2 am; Sat. 7 pm-2 am

OUR OPINION

THOUGHT FOR TODAY

*This is the beginning of a new day. God has given me this day to use as I will. I can waste it or use it for good. What I do today is important because I'm exchanging a day of my life for it. When tomorrow comes, this day will be gone forever, leaving in its place something I have traded for it. I want it to be gain, not loss; good, not evil; success, not failure; in order that I shall not regret the price I paid for it.*

# Tax Freedom Day moveth the wrong way

Before the recent record tax increases of the Florio Administration, New Jersey had already reached ninth place among the states with high taxes.

New Jersey, under the beatified (by the media) Mario Cuomo, is the state with the most burdensome taxes, followed now by New Jersey.

Lowest on tax impositions are New Hampshire, South Dakota and Idaho; Florida is 26th. Connecticut, Maryland and Delaware are also among high tax states, if you have any idea of escaping to nearby states.

"Government Waste Watch" estimates that New Jersey Tax Freedom Day — before the Florio deluge! — arrived on May 9. No doubt our tax liberation anniversary has been moved ahead, perhaps into June, with New York's.

The publication also revealed results of a recent poll conducted by the Wirthlin Group. The facts: 64 percent of those Americans polled prefer government to cut waste; 27 percent prefer government to cut defense spending; and only two percent — yes only two percent! — preferred a tax hike.

Apparently, President Bush has been reading the wrong polls, just as Governor Florio did. They will just have to learn the hard way...

# Another ghost industry?

This news should make environmentalists and other proponents of the no-growth social-economic philosophy happy.

The Port of New York and New Jersey, of which Port Newark-Port Elizabeth constitutes the biggest revenue collector, has been knocked off its perch as the "load center" (pre-eminent port) in America. Los Angeles has assumed that king of the containers title.

To be sure, in 1989, five other California ports surpassed the Port of New York and New Jersey in dollar value of maritime trade (imports and exports). Long Beach in California is beginning to make Port Newark-Port Elizabeth look deserted of cargo.

In measuring cargo itself, rather than dollars, our port system fares a little better. But no substantial growth has occurred at Port Newark-Port Elizabeth in a decade, despite the influx of foreign made automobiles and beer.

Moreover, as the capitalistic nations of the Pacific Rim and Japan continue to dominate world trade — and will continue to do so at least through the 1990s — container ships and bulk carriers will be stopping at the West Coast ports, where labor conditions are cheaper and where inland freight movements can be made more profitably through double-stacking of freight cars on rails (all the way to Chicago or to St. Louis).

Port Newark-Port Elizabeth officials cannot be faulted for not trying. But the officials at The Port Authority of New York and New Jersey have given far less attention to Port Newark-Port Elizabeth than to some of its other adventures — as for example its plunge into real estate (World Trade Center, Newark Law Center, etc.).

Port Newark-Port Elizabeth's downfall is not yet at hand, but matters can get worse, to the detriment of the entire economy of the state. Certainly New Jersey cannot absorb another big loss in revenues as are generated at the ports.

No one in state government appears particularly concerned about the matter, and the daily media hardly know the ports exist. Everyone in state government is caught up in social-engineering programs, as job security is ignored ... until another crisis is at hand!

The state legislature should conduct emergency hearings on the conditions at our ports — no, not another "study commission" — and then do what has to be done, even kicking the Port Authority in its lazy posterior anatomy, so as to have the Port of New York and New Jersey again assume high growth rates. For example, is the Port doing anything practical and practicable to prepare for the expected geometrical expansion of trade with the European Community beginning as early as 1991? Is anyone counting the ships?

Belleville Times

Serving Belleville Since 1909 (1 SPN 049-220)

**Publisher:** Frank A. Orechio

**Assistant to the Publisher:** Arnie Ziem

**Published Every Thursday** At 155A Washington Ave. Belleville, N.J. 07109

**Second-Class Postage Paid** At Newark, N.J. Postmaster: Send address changes to The Belleville Times, 155A Washington Ave., Belleville, N.J. 07109

**Editor:** Anthony Buccino

**Social Editor:** Helen Maguire

**Sports Editor:** Michael Lambert

**Advertising Mgr:** Celeste Federico

**Art Director:** Diane Lombardy

**All departments call:** 759-3200 Fax: 667-3904

**Annual Subscription** \$14.00

**Senior Citizens** \$ 7.00

YOUR OPINION

911 on the ball

To the editor:

We would like to highly praise the Belleville Police force and the Belleville Fire Department Emergency Squad.

On several occasions we have had the need to call 911 when my husband was suffering a severe heart attack. They were here within minutes and believe me, minutes can save a life. Their efficiency is to be highly commended.

Our most gracious thanks to all. May God Bless each and everyone.

Marie and Raymond Paolino

Artist says thanks

To the editor:

Between June 1 and June 22, I was afforded the opportunity to display my recent works of art at the Belleville Public Library.

I wish to publicly thank the Belleville Library for allowing me to do so.

Needless to say, my works were complimented by being exhibited in the newly refurbished Trustees' Room.

I look forward to future exhibitions at this wonderful facility.

Marcie Miele

Picnic was fun

To the editor:

I would like to publicly thank Chief Walter Beresford, Deputy Chief Robert Reed, and the firemen of Shift 4 from the Belleville Fire Headquarters on Franklin Avenue. Again this year they hosted a wonderful barbecue for the students and staff of the Therapeutic School and Preschool of Community Mental Health Services in Belleville.

Through the generosity and thoughtfulness of these firemen, the children participated in a fun-filled event during their summer school program. In addition to enjoying the plentiful menu, the children learned about the fire trucks and saw a demonstration of the aerial ladder.

Diane Hoffman, Director  
Therapeutic School and Preschool  
Extended School Program

'My son, the artist'

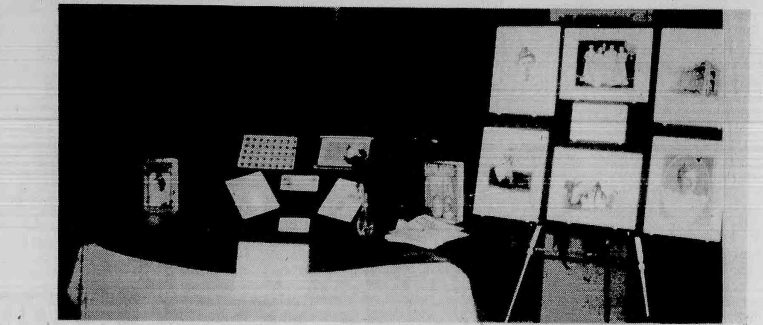
To the editor:

It has been said that artist Vincent van Gogh painted that \$82 million portrait of his physician, Dr. Gachet, as a payment for services rendered by the good doctor.

If this be so, I would say... Vincent van Gogh did indeed give us a graphic example of just how high a medical practitioner's fee can be. Dr. Gachet most definitely deserves mention in Guinness's Book of Records.

I would also say... due to the enormous amount of publicity surrounding the sales price of Vincent van Gogh's paintings, that number one mothers' pride-filled exclamation, "My son, the doctor," will soon be playing second fiddle to "My son, the artist."

Chester Dobkowski



CLARA MAASS REMEMBERED — An exhibit featuring photos of Clara Louise Maass, commemorative stamps and other memorabilia which was on display recently in observance of the 114th birthday of the namesake of Clara Maass Medical Center. Among the other events held were a special dinner menu in the cafeteria featuring foods from Cuba, the Philippines and the United States, and a wreath-laying ceremony at the gravesite of Clara Louise Maass.

Window on My World

• EASTERN AIRLINES loyalists are happy the airline is back in business — on the go and on the grow. Last week, I made a round trip via Eastern Airlines from Newark to Atlanta, West Palm Beach, and on the return stopped at Atlanta and then continued to Newark. The captain of Flight 636 from Palm Beach to Atlanta was Gwen Schallow, the only female captain in the Eastern Airline system — and probably the only one of a handful of female airline captains the world over. Her proud mother was on the flight, and I sat in the adjoining seat. For personal wit and charm, these ladies can't be beat. The senior flight attendant was the able Richie Bayne. If travelers among the readers of this column board an Eastern Airlines plane and learn their fate is in the hands of Gwen Schallow and cabin service provided by Richie Bayne, there is ample assurance the flight will be safe and smooth, and the service will leave nothing to be desired.

• PRESENTLY, Eastern may have problems, but safety is not one of them. All the bad news reports about Eastern's past maintenance problems is just that — something that happened in the distant past.

Under the able management of court trustee Marty Shagrow, safety and reliability are the highest priorities of Eastern Airlines. I have full confidence in the airline and its personnel. In the days ahead, I will be obliged to fly south again — and again. I choose to fly Eastern Airlines. I have no reservation about putting the safety of my life in the hands of Eastern personnel.

• IF YOU plan to be in Florida and in the Palm Beach area, I would recommend the PGA Sheraton Resort at Palm Beach Gardens. The sales manager is a bright and persuasive young lady, Robin M. Mills.

• YEAR after year, members of the New Jersey State Policeman's Benevolent Association re-elect the popular and knowledgeable Frank Ginesi as president. Ginesi has demonstrated time and again his persuasive powers with members of the Legislature of both parties and governors of either major party. He was best friends with former Governor Tom Kean, and he is at the top of the list with Democrat Governor Jim Florio. Ginesi is a real leader. Once in a while, his leadership is challenged, not because he isn't doing his job, but because the simple facts of life are that other people have ambitions to be top dog — and that exists in any organization.

• THROUGH a misunderstanding, state funding for the United States Geological Survey Cooperative Monitoring Program was eliminated from the current budget prepared during the last months of Tom Kean's governorship. It's an annual contract on a 50-50 match basis.

Under this annual contract, the U.S. Geological Survey provides and maintains equipment and collects, records and publishes data derived from monitoring stream flow, reservoir and lake levels, surface water quality, ground water quality and levels, flood crests and low flows. This is the basic data base for water resource management in New Jersey. In our state, the published data goes back to 1913.

By federal law, the U.S. Geological Survey can never contribute more than half the funding in joint programs. The state does not have the resources to take over the monitoring, nor does it own monitoring equipment. Continuation of this basic data base is an absolute necessity for New Jersey. Elimination of the matching funds (\$590,000) would result in the loss of the entire monitoring network and data base and leave New Jersey in the position of managing its resources blindly.

New Jersey would lose \$600,000 in matching federal funds, and it would also have the dubious distinction of being the only state in the country not participating in this program. Cost savings and revenues derived from projects negatively impacted would more than make up for the \$590,000 of matching funds.

• IT IS hard to believe, but it's true that one member of the Nutley Parks Department management was suggesting a certain employee be given a lie detector test. It seems that the arrogance of power rears its ugly head at Nutley Town Hall with increasing frequency.

• I WAS excited to receive in today's mail a note from former Nutleyite, John Bell, who now lives in Margate City, New Jersey. His card brought the following warm greeting — "May your joys be as deep as the ocean and your cares as light as the foam and tomorrow filled with love and happiness." And to you, John, thanks for your thoughts and thoughtfulness, and God bless you with good health as you enjoy your 85th year.

• IT WAS like old times at the West Palm Beach Eastern Airlines departure and ticket counters, seeing the familiar faces of hard working employees like Judy Castro, April West and Supervisor Jane Semelsberger.

• GOVERNOR Jim Florio received a ringing endorsement this week from a very important source — Stephen Berger who recently left the New York/New Jersey Port Authority Executive Director's job to return to the private sector.

Berger is a veteran New York City and New York State official and former investment banker who observed, "What Florio has done will help New Jersey ride out the next several years without the drain of a collapsing fiscal situation. Whatever happens to Florio, New Jersey has won." Berger said Florio's action in proposing sweeping sales and income tax hikes to close large budget gaps and equalize local school funding "reminds us that when we elect people to office, we're doing it because we want them to lead, to take risks — not to merely do what we'd like them to do or to take polls before deciding what to do."

He said most public officials realize raising taxes in certain situations is the most responsible action to take. But he said, "The private argument to me from the political leaders was always, 'You may be right, but you don't have to run for public office.'"

"To that, I say, 'You're not elected to hold office. You're elected to do the right thing.'"

Berger further said real political leaders "must be willing to spend their personal political capital on things that may be unpopular but which are necessary and right. I believe the test of a public official is, does that public official do the right thing rather than the easy thing on pocketbook issues? I say pocketbook issues because those are the most critical."

Berger is absolutely on target.



## Girl Scout volunteers honored

The Girl Scout Council of Greater Essex County announced that seven Belleville residents received awards for their continuous and outstanding service at their recent Annual Meeting and Recognitions Dinner.

Carol Graziano, Marjorie Kunst, Mary Lebrun and Kathy Rossi received Outstanding Leader Awards which recognize people whose contributions have succeeded in motivating girls to deepen

their self-awareness, relate well to others, develop personal values, and contribute to society in meaningful ways.

Ellen DaCosta and Louise Motacki were presented Outstanding Volunteer Awards which are reserved for adult Girl Scouts, other than troop leaders, whose service is beyond the expectations of the position they hold in their community and therefore warrants council-wide recognition.

In addition, a Girl Scout Appreciation Pin was awarded to Doris Cypolski. To receive the pin, individuals must maintain an innovative approach to, and enthusiasm for, the development and advancement of the Girl Scout program. Service provided by the awardee must be delivered in a least one or more communities and contribute to the Greater Essex Council's goals and objectives.



**VOLUNTEERS APPRECIATED** - Girl Scout Council of Greater Essex County Presiden Jeanne Van Steen thanks Belleville residents Doris Cypolski and Louise Motacki for their continuous efforts in promoting good citizenship through Girl Scouting.



**GRADUATE SCHOLARSHIP** - Amadeo Salamoni Jr. of Belleville, center, received a scholarship award for his work in ceramics at Kean College. The check was presented by Dr. Edward B. Well, Dean of the School of Liberal Arts at Kean; along with Professor Austin Goodwin, Chairperson of Kean's Fine Arts Department.

## Salamoni selected at Kean College

Amadeo Salamoni Jr. of Belleville, has been selected by the fine arts department of Kean College of New Jersey to receive a scholarship award for his work in ceramics.

Professor Austin Goodwin,

chairperson of the fine arts department at Kean, said Salamoni received the award based on his display of creative talent in ceramics. Goodwin explained the scholarship award would be applied to Salamoni's

graduate studies at the University of Delaware.

The scholarship was made possible by a grant from the Ceramics League of New Jersey.

## Council's new boards

(continued from page 1)

Villano, 136 White Oak Terrace.

The Advisory Health Council was appointed by the Township Council: Phyllis Giordano, 60 Emmet St., 4-year term; Thomas D'Elia, 112 Crest Drive, 4-year term; Anthony J. Tremarco, 56 Belmoir St., 3-year term; James Cozzarelli, 276 Washington Ave., 3-year term; Kathleen Noonan, 272 Holmes St., 2-year term; Louis J. Messano Jr., 219 Holmes St., 2-year term; Dolores DiPopolo, 27 Crestwood Ave., 1-year.

The council appointed a Cultural Affairs Advisory Council consisting of: Michael V. Marotti, 168 Holmes St., 4-year term; Pat Turi, 272 Forest St., 4-year term; Annemarie Perna, 57 Overlook Ave., 3-year term; Joseph A. DeRiggi Sr., 184 Beech St., 3-year term; Susan Groome, 141 Joralemon St., 2-year term; Bruce Morgan, 225 Adelaide St., 2-year term; Fred M.

Puleo, 9A Crescent Terrace, 1-year term.

A Building Development Advisory Council was appointed by the council. Its members are: Samuel Lepore, 270 DeWitt, 4-year term; William Lentz, 140 White Oak Terr., 4-year term; Vincent Menza, 22 Main St., 3-year term; Louis Parabashi, 133 Plenge Dr., 3-year term; Harry Groome, 142 Union Ave., 2-year term; Jack Gurrera, 105 Tappan Ave., 2-year term; and James Cozzarelli, 276 Washington Ave., 1-year term.

The council appointed a Senior Citizens Advisory Board consisting of: Betty P. Barr, 96 Chestnut St., 3-year term; Floyd St.; Viola Spray, 28 Tremont Ave. Two year terms will be served by Grace Purdue, 171 Garden Ave.; Franny P. Stanco, 96 Magnolia; Thomas F. Spillane, 151 Belleville Ave.; and Adolph N. Vecchione, 112 Floyd St.

## Fortune Teller.



Louise Ferrentino, Forest Hill

**Our promise of growth, and safety, starts with a customer service professional.**

Your visit to a First DeWitt branch often starts with one of our customer service personnel, selected and trained to handle your transaction with courtesy and professionalism. That first friendly smile represents the beginning of an unbroken line of concern for the safety, and growth of your investment. From the teller's window right up to the chairman's office, First DeWitt is dedicated to providing top-drawer financial services,

delivered to you with reliable professionalism and courtesy.

As one of the top twenty safest thrifts in the U.S., First DeWitt has the strength to offer you solid, low risk investments. As one of New Jersey's most progressive associations, First DeWitt can offer you a broad range of intelligent banking services ready to meet the financial requirements of your personal and business life. The combination is unbeatable.

*Put your fortune, large or small, in to the hands of a professional. Call us, or stop by your local First DeWitt branch.*

**FIRST DeWITT SAVINGS**

A First State Financial Services Company

**1-800-537-0079**

FDIC Insured

Offices Throughout Northern and Central New Jersey

Equal Housing Lender  
Equal Opportunity Lender

## Marines have special plates

The New Jersey Division of Motor Vehicles, Special Plate Division, is now issuing special license plates to members of the Marine Corps League, Department of New Jersey.

The non-commercial, special plates, identical in color and specifications to the regular members of League, which no numbers over

2000 New Jerseys.

Former Marines, eligible to become members of the league, may purchase the plates after joining one of the 25 detachments located throughout the state.

For additional information, prospective members may write to Plates, 32 Devon St., N.Arlington, I.J. 07032



## Palm and Tarot Card READINGS

By Mrs. Miller

759-0694

6-10 Washington Ave., Belleville

Hours: 9 A.M. - 10 P.M.

No Appointment Necessary

★ \$5.00 OFF WITH THIS AD ★

<p><b>ANY TERMITES ONE YEAR</b></p> <p><b>WARRANT \$425.00 GUARANTEE</b></p> <p><b>ANY CARPENTER ANTS FREE</b></p> <p><b>SIZE \$215.00 INSPECTION</b></p>	<p>OUR QUALITY WORK IS THE BEST IN THE INDUSTRY AT ANY PRICE. MONTHLY SERVICE AVAILABLE FOR PEST CONTROL.</p> <p><b>TERMITE CERTIFICATION \$45.00</b></p>
<p>25% OFF OUR ALREADY LOW PRICES ON PEST CONTROL SERVICES WHICH INCLUDE:</p> <p>• TERMITES • WASPS • BEES • SPIDERS • FLEAS</p>	<p><b>PACE</b></p> <p>OWNER OPERATED SAFETY INSURANCE PEST CONTROL</p> <p>PALESTINE PARK 481-3006 FARM LAWN 781-4448 1-800-834-3905</p>

# OBITUARIES

## Michael Bartley, 65

Michael Bartley, 65, of Kearny, formerly of Belleville, died July 21 in West Hudson Hospital, Kearny. Services were held July 24 in the Trinity Episcopal Church, Kearny. Arrangements were by the Wilfred Armitage Funeral Home, Kearny.

Mr. Bartley was a limousine driver for Wolf-Barney Limousine Co., Kearny, for the past five years. Previously he was a driver with Schuyler Cab Co., Kearny,

and a truck driver for Shell Oil Co., Kearny.

Born in Newark, he lived in Belleville before moving to Kearny 50 years ago.

He is survived by his wife, Margaret; three sons, Michael, Chris and David; four daughters, Mrs. Maureen Kaminski, Mrs. Donna Castlegiant, Stacy and Laura; a brother, Martin, and nine grandchildren.

## Miss Fitzpatrick, 93

Miss Florence G. Fitzpatrick, 93, of Bloomfield died July 26 in the Mountside Hospital, Glen Ridge.

A Mass was offered July 25 in the Sacred Heart Church, Bloomfield, after the funeral from the O'Boyle Funeral Home, Bloomfield.

Miss Fitzpatrick was an inspector for the Westinghouse Corp. in Bloomfield, where she worked for

35 years before retiring in 1962. She was a member of the Rosary Altar Society and the Block Rosary, both of the Sacred Heart Church. Miss Fitzpatrick also belonged to the Senior Citizens Association and the American Association of Retired Persons, both in Bloomfield.

Born in Belleville, she lived in Bloomfield for 60 years.

## Luigi Loncrini, 93

Luigi Loncrini, 93, of Belleville died July 26 in the Clara Maass Medical Center, Belleville.

A Mass was offered July 28 in St. Peter's Church, Belleville, following the funeral from the Kiernan Funeral Home, Belleville.

Mr. Loncrini had been a commissary employee for Prudential

Insurance, Newark, for 32 years, retiring 28 years ago. He served during World War I in the Italian Army.

Born in Verona, Italy, he came to Springfield, Mass., in 1923 and lived in Newark before moving to Belleville 53 years ago. Surviving are two sons, Aldo and Lawrence.

An Orechio Publication

## R. Turano Sr., 47

Robert Turano Sr., 47, of Nutley died July 26 in the Mountside Hospital, Glen Ridge.

A Mass was offered July 30 at Our Lady of Mt. Carmel Church, Nutley, after the funeral from the S. W. Brown & Son Funeral Home, Nutley.

Mr. Turano was the owner of Robert Turano Painting and

Decorating in Nutley for 25 years. Born in Newark, he lived in Belleville before moving to Nutley 25 years ago.

Surviving are his wife, Ann; a daughter, Gina Marie; a son, Robert Jr.; his mother, Mrs. Rose Turano; two sisters, Mrs. Carol Johnson and Mrs. Bernadette Gross, and a brother, Peter C.

## G. Veneziano

A Mass for Gerald J. Veneziano, 76, of Belleville was offered July 28 in Our Lady of Mt. Carmel Church, Nutley, after the funeral from the S. W. Brown & Son Funeral Home, Nutley.

Mr. Veneziano, who died July 25 in the Clara Maass Medical Center, Belleville, had been a tool and die maker for 12 years with Goody & Sons, Harrison, before retiring 11 years ago. He was a member of the

Belleville Senior Citizens. Born in Newark, he moved to Belleville 13 years ago.

Surviving are a daughter, Mrs. Judy Piccolo; a son, Gerald J., two brothers, Nick and Anthony; four sisters, Mrs. Rose Troia, Mrs. Virginia Organini, Mrs. Nancy Vincenti, and Dolores Benvenuti; three grandchildren and a great-grandchild.

## Peppino Spina, 56

Peppino Spina, 56, of Fairfield, formerly of Belleville, died July 28 in the Clara Maass Medical Center, Belleville.

A Mass was offered July 31 in St. Thomas More Church, Fairfield, after the funeral from the Ippolito-Stellato Funeral Home, Fairfield.

Mr. Spina had been the owner and operator of Peppi Spina Coats and Suits, West New York, for 23

years, retiring in 1987.

Born in Campo Basso, Italy, he lived in Belleville before moving to Fairfield nine years ago.

Surviving are his wife, Mena; two daughters, Mrs. Rina Fiorenza and Dalia; a son, Dario; his mother, Mrs. Antonette Spina, and three sisters, Mrs. Lena Frappalo, Mrs. Natalie Turturiello and Mrs. Laura Farantino.

# ADVERTISE!

# Professional Directory

THE NUTLEY SUN, BELLEVILLE TIMES BLOOMFIELD LIFE 667-2700



### Obstetrics / Gynecology

NUTLEY - KEARNY  
OBSTETRICS - GYNECOLOGY  
**HOWARD GRODER, M.D.**  
**JEFFREY ROSEN, M.D.**  
HIGH RISK PREGNANCY  
INFERTILITY

Nutley Medical Plaza  
181 Franklin Avenue  
Nutley, N.J. 07110  
667-2212

Arlington Medical Building  
837 Kearny Avenue  
Kearny, N.J. 07032  
991-1519

"Serving The Community For 40 Years"

### Podiatrists

**Dr. Nicholas Pellicoro**  
Surgeon Podiatrist  
FOOT SPECIALIST  
460 Franklin Avenue  
Nutley • 667-6960  
Medicare Participating Physician  
WALK-IN-CLINIC

**Dr. Marykate Noonan Doyle**  
Surgeon Podiatrist  
Foot and Ankle Specialist  
272 Holmes Street  
Belleville  
Call for Appt.  
(201) 450-4070  
Medicare and NJBS Participating Physician

### Insurance

**The Prudential**  
OFFICE OF  
**Doug Cartwright**  
• AUTO • HOME  
• LIFE • INVESTMENTS  
CALL FOR QUOTES  
103 Washington Avenue  
Belleville 751-2880

### Counselors

**ROBERT B. HOWAT, Ed.S.**  
State Licensed — Insurance Accepted  
INDIVIDUAL, MARITAL, FAMILY,  
SEPARATION & DIVORCE  
DEPRESSION, ANXIETY, PHOBAS,  
AND PANIC ATTACKS  
596 FRANKLIN AVENUE  
NUTLEY, N.J.  
661-5055

### Dentists

Dial "NO-PAINO"  
(667-2466)

Smile Today

*J.D. Muglia D.D.S., P.A., F.A.C.D.*

10 Franklin Ave.  
Nutley, NJ

Cosmetic & Restorative  
Dentistry



24 Hr. Emergency  
Service

### Attorneys

**Joseph T. Connolly**  
ATTORNEY  
AT LAW  
"Fax me your troubles"  
748-8038 FAX 748-3167  
693 Broad Street  
BLOOMFIELD  
GENERAL PRACTICE, SINCE 1967

### Financial Planning

**Henry F. Wawroski**  
CFP  
Financial Planning for the  
"Working Class"  
Tel: 748-9893  
Money Markets with Free Checking  
College/Retirement Planning  
IRA's and Rollovers  
Tax-Strategic Funds  
Securities Offered Through Stuart Street & Company  
Livingston, New Jersey • 731-954-1354

### Cardiologist

**Sharlene M. Watts**  
M.D.  
Cardiology  
& Internal Medicine  
500 Franklin Ave.  
Nutley • 235-0389  
Hours by Appointment

### Psychologist

**William M. Gordon**  
Ph.D.  
• Individual & Marital  
Therapy  
• Addictions  
Upper Montclair Area  
744-8791

### Chiropractors

**DR. RALPH J. DI MAIO**  
CHIROPRACTOR  
Serving your community  
for over 11 years  
Most insurances provide coverage.  
751-8805  
625 Joramelon St., Belleville

# RELIGIOUS VIEWPOINT

Gerald Fortunato, Pastor  
Silver Lake Baptist Church



## Numbering your days

Our days on this earth are limited. Even if we experience what is known to be a full lifetime, living into one's 70's, 80's or 90's, our days are limited. Life is but a vapor that appears for a moment, then vanishes away (James 4:14). Young people so often believe that they have their whole life ahead of them and they have plenty of time to get right with God and do something for Him. But every teenager needs to stop and think of how little time he really has on this earth. The only thing that really counts is what you do for Christ.

Moses prayed a beautiful prayer pertaining to this very thought, recorded in Psalm 90:12: "So teach us to number our days, that we may apply our hearts unto wisdom." Moses was not suggesting that you count each day on a calendar and mark it as you go through life. He was asking the Lord to teach him to number the importance of each day and to give him the ability to look at life the way God views it. Each day is another opportunity to do the will of God.

Even if a young person has many abilities and talents, he will have an empty life without the Lord Jesus Christ as his Saviour, or by his not putting Christ first.

Regardless of how many talents and abilities one possesses, the Lord Jesus must be first. Do not allow the Devil to steal the joy of Christ out of your heart by putting the thought in your mind to live the way you feel like living and believing everything will turn out right.

Remember Proverbs teaches us, "There is a way that seemeth right unto a man, but the end thereof are the ways of death." Put Christ first, and you will never regret it.

Number your days according to the Bible!

## Dawn Martin

A Mass of Requiem for Dawn Martin, 18, of Belleville, was offered July 28 in Sacred Heart Church, Bloomfield, after services from the Zarro Funeral Home, Bloomfield.

Miss Martin, formerly of Bloomfield, died July 26 as a result of injuries sustained in a motor vehicle accident July 11.

She had worked at Dunkin Donuts, Bloomfield.

Surviving are her parents, Donald T. and Margaret Giro Martin; a son, Frank Farina; two brothers, Dean and Donald Martin Jr., and a sister, Darlene Martin.

Interment was at Glendale Cemetery, Bloomfield.

## Summer smog warning

Thomas J. Longo, Belleville health officer, calls the attention of residents to elevated levels of ozone that may occur during the summer months.

Ozone is the major component of "Smog." It is caused by the action of sunlight on the emissions of industries and automobiles, and it usually occurs on warm, sunny days between the hours of 11 a.m. and 7 p.m. The New Jersey Department of Health recommends that whenever ozone reaches unhealthy levels, people should limit their physical activity outdoors. When high ozone levels are expected or are present, radio bulletins are issued by the Department of Environmental Protection.

A number of experts say that adverse health effects are linked to exposure to ozone because it is a respiratory irritant. Symptoms include: shortness of breath, chest pain, throat irritation, coughing and sneezing. Those especially sen-

sitive are the very young, the elderly and people with respiratory problems, as, for example asthma. However, even healthy adults may be adversely affected if they engage in heavy exercise or perform manual labor when ozone levels are high.

Information on air quality forecasts or monitoring may be obtained by calling (800) 782-0160, the New Jersey Department of Environmental Protection.

## Crecco sponsors free school bill

A bill sponsored by Assemblywoman Marion Crecco (R-Essex) would enable retired individuals over the age of 60 to attend college tuition free.

"This legislation will change the current age limitation from 65 to 60 and enable more retired citizens to attend our public colleges free or tuition costs," Mrs. Crecco said. "Several other states have also lowered their age limitation, most recently Delaware."

Crecco explained that the older students will still pay a one time fee to cover administrative costs and will still purchase any necessary textbooks and supplies for a class. The bill, A-1318, is under consideration in the Assembly Higher Education Committee.

**IRVINE**  
**Cozzarelli**  
**Memorial Home**  
IN YOUR TIME OF NEED  
"A Family Name You Can Trust"

James J. Cozzarelli, Jr.  
Owner/Manager  
276 Washington Avenue  
Belleville  
759-1114

**Livingston School of Reading**  
Reading Improvement • All Ages  
• Speed Reading • Study Skills • All Ages  
• SAT • 6 Weeks to Vocabulary  
• Grammar & Writing Skills  
• All Elementary Subjects  
• Diagnostic Testing  
• English for the Foreign Born  
• Certified & Experienced Reading Specialists  
INDIVIDUAL INSTRUCTION  
AT REASONABLE RATES  
**992-5975**

After 23 Years...  
**DENTISTRY FOR CHILDREN, P.A.**  
Is Proud To Announce The  
**RELOCATION**  
Of Their Office To:  
382 W. PASSAIC AVE.  
BLOOMFIELD, NEW JERSEY  
(Diagonally across from our old office and adjacent to Broadway Plaza)  
By Appointment  
201-338-1383  
Jack Budnick, D.D.S.  
Philip Wasserman, D.D.S.  
William B. Kusen, D.M.D., M.S.C.D.  
Orthodontist  
382 West Passaic Ave.  
Bloomfield, N.J. 07003  
"Where Nutley Children of Bloomfield meet!"

ADVERTISE IN THIS SPACE  
FOR AS LITTLE AS \$25 PER WEEK

CALL: 667-2700



# BOOKMARKS

By Adrea Cohen

## We need you

Friends of the Belleville Public Library and Information Center, under the Chair of Isabel Wirrlinger, President of the Friends, will run a yard sale on Friday, August 3 and Saturday, August 4, from 10:00 a.m. - 4:00 p.m. at 16 Rutgers Street, with all proceeds going to the Friends of the Belleville Public Library Information Center. All donations of items, except clothing, may be brought to 16 Rutgers Street. For further information, call 759-2207.

## Even the President reads for pleasure

According to a recent newspaper account, President Bush reported to a group of magazine publishers visiting the White House that in addition to official documents, he finds "Instead of taking one of those Halcon sleeping tablets a good novel will help." He is currently reading "Bonfire of the Vanities" by Tom Wolfe and "The Means of Ascent" by Robert C.

Other Best Sellers, now available in paperback, that you might enjoy reading, available at the Belleville Public Library and Information Center, include "While My Pretty One Sleeps," by Mary Higgins Clark, the murder of a gossip writer in New York, "The Russia House" by John Le Carré, espionage changes its ways as glasnost begins to rust the Iron Curtain, "The Joy Luck Club," by Amy Tan and the bonds shared by Chinese American women and their immigrant mothers, "Capital Crimes," by Lawrence Sanders, the story of a self-anointed messiah who plunges political and social life in Washington, "Blessings," by Bela Plain, the story of a lawyer whose romantic past catches up with her on the eve of her marriage, "Presumed Innocent," by Scott Turow, the tale of a brutal murder that creates a crisis among big city politicians, and "Creature," by John Saul, the story of a siege of horror that besets a high school football team.

If the books are not on the shelf, the Circulation Department will put the books on reserve for \$25 per title.



Enjoying the crafts programs for teens and adults at the Belleville Public Library and Information Center are, from left to right Nina Dixon, Michele Montalto, and Dominick Ritacco. You can still register for the Monday, Tuesday, Wednesday, and occasional Thursday morning craft programs at 11:00 a.m. at the Library.



David Lauer will present a program on identifying and collecting fossils, Monday, Aug. 6 at 10:45 a.m. at the Belleville Public Library and Information Center, Shafter Branch Library, 30 Magnolia St. Collecting fossils and conducting expeditions to locate them is Lauer's hobby.

## Programs abound

August 2- Mexican Mirrors, a craft program for teens and adults, will take place at 11:00 a.m. at the Belleville Public Library and Information Center, call the Library at 450-3434 to register.

A secret movie will take place at 2:00 p.m. in the James J. Cozzarelli, Jr. Children's Room.

A Storytime for Toddlers will take place at 9:30 a.m. and a Storytime for Preschoolers at 10:45 a.m. at the Shafter Branch, 30 Magnolia Street.

August 3- A Pinata Party will take place at 11:00 a.m. in the James J. Cozzarelli, Jr. Children's Room, 221 Washington Avenue.

Friends of the Belleville Public Library and Information Center Yard Sale from 10:00 a.m. - 4:00 p.m. at 16 Rutgers Street.

August 4- Friends of the Belleville Public Library and Information Center Yard Sale from 10:00 a.m. - 4:00 p.m. at 16 Rutgers Street.

August 6- Peter the Clown will perform at the Belleville Public Library, 221 Washington Avenue, at 7:30 p.m. Registration is required. Call the Library at 450-3434 to register.

"Fossil Rocks," a program being given by David Lauer, will take place at 10:45 a.m. at the Shafter Branch, 30 Magnolia Street. "Make a Japanese Kite," a craft program for children, will take place at 10:00 a.m. in the James J. Cozzarelli, Jr. Children's Room.

August 7- Panimals, a craft for teens and adults, will take place at 10:00 a.m. in the James J. Cozzarelli, Jr. Children's Room.

The Crocheting Class, taught by Anna Rose Mazur, will take place from 1:00 - 3:00 p.m. at the Belleville Public Library and Information Center.

August 8- "Making Rainbow Tops," a crafts program for teens and adults, will take place at 11:00 a.m. at the Belleville Public Library and Information Center. Call the Library at 450-3434 to register.

Travel Los Angeles, a travel video, will be shown at 1:00 p.m. at the Belleville Public Library and Information Center. Call the Library at 450-3434 to register.

Turtleback Zoo will come to the Shafter Branch Library, 30 Magnolia Street, at 11:00 a.m.

## Peter the Clown

As part of Eight Great Live Monday Nights at the Belleville Public Library and Information Center, Peter the Clown will present juggling, active magic, and puppetry at 7:30 p.m. in a special family night program at the Belleville Public Library and Information Center. Registration is required. Call the Library's Circulation Desk at 450-3434 to register.

## Films for August

During August on Mondays at 1:00 p.m. the Belleville Public Library and Information Center will have special films for teens at 1:00 p.m. On Wednesday, there will be Travel Films also at 1:00 p.m. On August 1, "Epcot Center" will be featured; at 1:00 p.m. as well as the "Florida Gulf Coast." On August 8, "Los Angeles" will be featured; on August 15, New Orleans; on August 22, "Boston"; and finally on August 29, "The Maine Coast" and "Mystic Seaport." Call the library to register for the series.

## Spending freeze sought

Stating that legislation approved recently by the General Assembly creating a state spending cap contained a great many loopholes and offered no assurances that there would be a spending freeze, Assemblywoman Marion Crecco (R-Essex) announced that she supported a state spending cap amid a great many concerns.

"This bill is really not a safeguard against state spending," said Crecco. "At any time, the cap can be overturned, a great many items are exempt from the cap, and there are no assurances that there would be any freeze in state spending. I supported this bill because there was a need for some type of legislation of this nature."

Crecco explained that she is the sponsor of a proposed Constitution-

al amendment, ACR-42 which also provides for a state cap.

"My proposal is a Constitutional amendment which can not be overturned by the politicians," Crecco further explained. "Nor does my bill have the exemptions contained in their Democratic proposal."

"What concerns me most is that I have been unable to have this bill posted for a vote by the State Government Committee chaired by Assemblyman Byron Baer (D-Bergen)," said Crecco. "If they are serious about a state spending cap, then this is the bill that should be passed. My bill is such that only the voters can overturn it."

Crecco, serving her third term in the General Assembly, represents Belleville and other towns.

## Susan Patrizio honored at college

A Belleville resident, Susan E. Patrizio, majoring in medical record technology, was among 340 full-time and part-time students named to the President's List at Union County College for the Spring Semester 1989.

The President's List recognizes students who have achieved a minimum of a 3.5 cumulative average based on a 4.0 scale.

## Patricia Perez named to dean's list

Patricia Perez, of Belleville, was named to the Dean's List for the spring quarter 1990 at Northeastern University, Boston. Ms. Perez is majoring in business administration.



Vincent Cozzarelli, Jr., Ph.D.

## Getting an Accurate Reading

When the onset of fever makes it necessary to take one's temperature, cooler heads are required to read the results. While normal body temperature is said to be 98.6 degrees F., doctors seldom worry as long as oral readings reside in the 97.0 to 99.0 degrees F. range. Body temperatures tend to register about a degree warmer when taken rectally, and a degree cooler when taken under the arm. The time of day also extends into the picture when taking body temperature. Morning temperatures tend to be a degree or two cooler than those taken in the evening. It is wise, therefore, to take all these factors into account when taking a temperature and assessing the need to call a doctor.

When you need to have a prescription filled bring it to us. Prompt service is always provided at ROSSMORE PHARMACY, 338 Washington Ave., 759-1968, 759-1956. "Your Doctor Knows Us - Your Doctor Trusts Us." Gift items, cosmetics, toiletries, cameras, film and transistor radios are stocked. Open: 9am - 10pm daily, 9am - 9pm Sundays.

HINT: Body temperature usually falls between late night and early morning.

**HILLSIDE BEDDING**  
Everyday Low Prices

Serta Ultra Firm			
Mattress	Box	4 in 1 Special	
Twin	\$129	\$129	Set
Full	\$159	\$159	Set
Queen	\$209	\$209	Set
Reg. \$149-249			

Ortho Support Specialty Firm I			
Mattress	Box	4 in 1 Special	
Twin	\$149	\$149	Set
Full	\$179	\$179	Set
Queen	\$229	\$229	Set
Reg. \$189-299			

Ortho Support Deluxe Classic Firm			
Mattress	Box	4 in 1 Special	
Twin	\$179	\$179	Set
Full	\$199	\$199	Set
Queen	\$259	\$259	Set
Reg. \$199-349			

**BONUS 4 IN 1**  
1. Mattress 2. Foundation 3. Frame 4. Pillow

Ortho Support Extra Quality Firm			
Mattress	Box	4 in 1 Special	
Twin	\$249	\$249	Set
Full	\$349	\$349	Set
Queen	\$449	\$449	Set
Reg. \$299-659			

Ortho Support Premium Firm			
Mattress	Box	4 in 1 Special	
Twin	\$299	\$299	Set
Full	\$399	\$399	Set
Queen	\$499	\$499	Set
Reg. \$309-749			

Ortho Support Pillowtop Deluxe Firm			
Mattress	Box	4 in 1 Special	
Twin	\$399	\$399	Set
Full	\$499	\$499	Set
Queen	\$599	\$599	Set
Reg. \$449-849			

Serta Perfect Sleeper Ultra Plush Firm			
Mattress	Box	4 in 1 Special	
Twin	\$499	\$499	Set
Full	\$699	\$699	Set
Queen	\$799	\$799	Set
Reg. \$599-999			

Ortho Support Pillowtop Deluxe Firm II			
Mattress	Box	4 in 1 Special	
Twin	\$599	\$599	Set
Full	\$699	\$699	Set
Queen	\$899	\$899	Set
Reg. \$629-1199			

Sealy Special			
Mattress	Box	4 in 1 Special	
Twin	\$109	\$109	Set
Full	\$139	\$139	Set
Reg. \$119-299			

Ortho Support Super Premium Firm			
Mattress	Box	4 in 1 Special	
Twin	\$199	\$199	Set
Full	\$239	\$239	Set
Queen	\$319	\$319	Set
Reg. \$219-449			

Serta Ultra Firm			
Mattress	Box	4 in 1 Special	
Twin	\$449	\$449	Set
Full	\$549	\$549	Set
Queen	\$679	\$679	Set
Reg. \$529-\$899			

**DAY BED**  
"THE LIBERTY"  
• FLOORING BACK  
• 2 SIDE  
• NO MATTRESS

**\$199**

**SOMMA MATTRESS**  
FLOTTING BED  
• NO SPECIAL SHEETS  
• ADJUSTABLE FRAMES  
• LIGHTWEIGHT

**\$179**

**CAR BED**  
"THE MOTOR"  
• "The Motor"  
• "The Motor"

**\$399**

**POSTUREMOTION**  
ADJUSTABLE BED  
PROMOT 338  
PROMOT 338

**\$400**

**EXTRA BONUS COUPON**

Get **\$100 OFF**  
An Extra  
Any King Set Over \$650  
Get An Extra \$75 OFF  
Any Queen Set Over \$550  
\$50 OFF Any Full Set Over \$350  
\$30 OFF Any Twin Set Over \$250

**hillside BEDDING**

**109 Bloomfield Ave. Bloomfield**

**FREE DELIVERY**  
With This Ad

**Think Flowers... Think Roxy Florist**  
AT BLOOMFIELD CENTER  
328 Glenwood Avenue • Bloomfield 743-3327

**FRANK P. DELL'AQUILA, M.D.**  
takes pleasure in announcing  
the association of  
**PAUL V. DELL'AQUILA, M.D.**  
for the practice of  
**INTERNAL MEDICINE**  
Clara Maass Professional Center  
5 Franklin Avenue  
Suite 509  
Belleville, New Jersey 07109  
(201) 450-0400  
Hours by appointment

**D'Art of Living**  
Brass, Wicker and Rattan Furniture  
CHAIRS RECOVERED  
Let 'Em Splash!  
SHOWER DOOR SERVICES  
Sales • Installations • Repairs  
Residential & Commercial  
Custom and Unique Designs  
are our Specialty  
472-3030  
228 5050  
Cushions Made To Order  
GIFT ITEMS  
743-6790  
176 Broad Street, Bloomfield  
10% Off Reg. Price With This Ad

# CROSS OVER THE BRIDGE TO KEARNY'S



## SEMI-ANNUAL SIDEWALK SALE

Friday, Aug. 3rd and Saturday, Aug. 4th

Shop Friday 9 AM - 9 PM; Saturday 9 AM - 6 PM

Sponsored By  
West Hudson/South Bergen  
Chamber of Commerce

### BEN FRANKLIN



50% OFF  
REG. PRICE  
ALL SUMMER SHOES  
BEACHCOMBERS - ZORIES

50% OFF PRICE  
SPENCERS INFANT  
SPORT SHORTS



20" SWIM RINGS  
77¢ REG. \$1.29

SIZES  
S-M-L  
XL  
REG. TO  
\$5.99



LADIES  
DRESSES  
\$2.97 S-M-L  
& \$3.97 XL

MEN'S  
FRUIT OF THE LOOM  
TUBE SOCKS  
\$5.47 REG. \$6.99  
PKG. OF 6



276 Kearny Avenue, Kearny 991-6594

### THE GOLD STORE

14 Kt



18 Kt

Bracelets Herringbone ..... \$13.00  
14Kt Hoop Earrings ..... \$10.00  
Charms ..... as low as \$8.00  
14Kt Name Ring ..... \$65

Guaranteed Lowest Prices  
We import directly from the source

Bring in this Ad and receive  
a FREE 14Kt Gift!

STORE HOURS: Tues. - Fri. 11 AM - 7 PM, Saturday 10 AM - 6 PM

230 Kearny Avenue Kearny, N.J. (201) 998-4832

### FOLLOW THESE STEPS FOR SAVINGS



Sidewalk  
Sale  
Aug. 3rd  
& Aug. 4th

final  
summer  
clearance

new arrivals coming in

### CLASSY LADY

264 KEARNY AVE., KEARNY • 998-8710  
DRESSES SPORTSWEAR ACCESSORIES

COLOR TV  
AIR CONDITIONERS  
STEREOS, VIDEO, APPLIANCES  
WALKMAN

### KEARNY ELECTRONICS

"Your Discount Home Entertainment Center"

991-3599

266 Kearny Avenue, Kearny

### Super Sidewalk Sale

(Next to Mande's Shop)

★ **MAD MARV'S**  
ONE PRICE CLOTHING ★

**Super Special  
Dresses \$10.00**

Retail Value up to \$70.

COUPON  
**FREE  
PAIR OF EARRINGS**  
With Coupon  
Retail Value \$10  
No Purchase Necessary  
Coupon Expires Saturday, August 4th  
— ONE GIFT PER CUSTOMER —

282 Kearny Ave., Kearny • 997-9755

(201) 955-1111

Easy Rider  
Custom Chrome  
V-Twin



**BTO CYCLE ACCESSORIES, INC.**

HARLEY-DAVIDSON PARTS & ACCESSORIES

— **DRAG SPECIALTIES** —

We are a full-line Easy Rider Dealer

LEATHER — JEWELRY  
INTIMATE APPAREL

HOURS:  
Daily 11 a.m. - 7 p.m.; Thurs. & Fri. 10 9 p.m.; Sunday 9 a.m. - 1 p.m.

69 KEARNY AVENUE, KEARNY, N.J.

Maggie's Bridal Shoppe, Inc.



BRIDAL,  
BRIDESMAID,  
MOTHERS,  
AND EVENING GOWNS

BUSINESS HOURS:  
Mon., Thurs. & Fri. 10 AM to 9 PM  
Tues., Wed. & Sat. 10 AM to 6 PM

(201) 998-1774

FINAL SALE — MOTHER-OF-BRIDE

331 Kearny Ave., Kearny



ACTIVEWEAR  
for  
MEN & WOMEN  
FOOTWEAR, SWIMWEAR  
WORKOUT CLOTHES

by...  
JACQUES MORET  
YES CLOTHING  
REEBOK

L.A. GEAR  
T-MICHEAL  
O.P.  
CRAZEE WEAR  
SPEED CONTROL JEANS

822 KEARNY AVENUE  
KEARNY, N.J. 07032  
(201) 955-1555

### IDEAL TUXEDOS

FORMAL WEAR  
RENTAL AND SALES

Grooms  
Get a **FREE**  
Tuxedo!

HOURS:  
Mon., Wed. & Fri. 9:00 to 8:00  
Tues., Thurs. & Sat. 9:00 to 6:00

EMILIA & LUIS, MANAGER



432 KEARNY AVE., KEARNY (201) 991-4464

**DUNKIN'  
DONUTS**  
It's worth the trip.



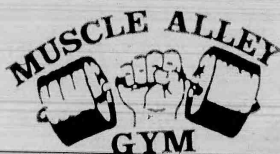
GET 6  
FREE DONUTS when you buy  
6 at the Regular 5¢ Doz. Price  
Good only at KEARNY STORE; one coupon per  
customer per visit. Offer cannot be combined. They  
must retain coupon. Taxes not included.

Limit:  
2 Offers  
Offer good  
until:  
Aug. 31

FREE  
BEVERAGE  
With Purchase of  
Any Sandwich on a Roll

Limit:  
2 Offers  
Offer good  
until:  
Aug. 31

297 Kearny Ave., Kearny • 998-4544



TANNING SPECIAL  
\$50  
UNLIMITED PER MONTH

Mon. - Fri. 10 AM - 10 PM Saturday 10 AM - 4 PM

201-998-7750

PRIVATE TRAINING AVAILABLE

349 Kearny Avenue, Kearny, N.J.



## STORK CLUB

### Nicholas James Drago

A first child, a son, Nicholas James, was born to Mr. and Mrs. Jason Drago of Belleville July 7 at Clara Maass Medical Center, Belleville. Birth weight was 7 pounds, 10 ounces.

Mrs. Drago is the former Marian Apple, daughter of Judy Apple of Belleville and the late James Apple. She is an advertising sales representative at Orechio Publications, Nutley. Mr. Drago, son of Nanette Weaver of Boonton and Peter Drago of Highland Park, is assistant manager of Vespa Goodyear, Carteret. Great grandparents are Marian Apple of Belleville, Violet Castro of Forest Hills, N.Y., and Josephine Drago of Queens, N.Y. Great great grandmother is Dignora Araujo of Forest Hills.

### Alyssa Renee Martino

A first child, a daughter, Alyssa Renee, was born to Mr. and Mrs. Steven Martino of Bloomfield July 22 at Clara Maass Medical Center, Belleville. Birth weight was 9 pounds, 5 ounces.

Mrs. Martino is the former Rosalind Mangione, daughter of Rosalyn Mangione of Bloomfield. She is with Hoffmann-La Roche, Nutley. Mr. Martino, son of Mr. and Mrs. Nicholas Martino of Bloomfield, is an attorney with Gaccione, Pomaco & Beck, Belleville.

### William John Braun III

A first child, a son, William John III, was born to Mr. and Mrs. William Braun II of Belleville July 11 at Overlook Hospital, Summit. Birth weight was 6 pounds, 15 ounces.

Mrs. Braun is the former Jill Marlowe, daughter of Martha McElfresh of Vero Beach, Fla. and Irving Marlowe of Long Island.

Mr. Braun, son of Mr. and Mrs. William Braun Jr. of Dunnellon, Fla., is a sales representative with MGI Inc., New York City.

### Edward Francis Dwyer

A third child, a son, Edward Francis, was born to Mr. and Mrs. Edward S. Dwyer of Bloomfield June 8 at Mountsinai Hospital, Montclair. He joins Corey and Jessica.

Mrs. Dwyer is the former Janet Boyle, daughter of Edward Boyle of Belleville and Marion Boyle of West Orange. Mr. Dwyer is the son of Jean Dwyer of Oak Ridge. Great grandparents are Blanche Dorr of West Orange, Della Triebler of East Orange and Frank and Jessie Billeneyer of Lakewood.

### Steven Matthew Rovell

A second child, a son, Steven Matthew, was born to Mr. and Mrs. Steven Rovell of Belleville June 17 at St. Barnabas Medical Center, Livingston. Birth weight was 9 pounds. He joins James Michael, two and a half.

Mrs. Rovell is the former Susan Antolini, daughter of Mr. and Mrs. Hugo Antolini of Belleville. Mr. Rovell is the son of Mr. and Mrs. Frank Rovell of Green Township, formerly of Belleville.

### Christopher Patrick Carida

A second child, a son, Christopher Patrick, was born to Mr. and Mrs. Vincent Carida of Turnersville June 20 at Kennedy Memorial Hospital, Washington Township. Birth weight was 6 pounds, 12 ounces. He joins David Vincent, 16 months.

Mrs. Carida is the former Lisa Buccino, daughter of Mr. and Mrs. Charles Buccino of Belleville. Mr. Carida, son of Mr. and Mrs. Lenny Carida of Sparta, is a national account executive with GMAC.

### Kristine Carla Cruz Arandela

A first child, a daughter, Kristine Carla, was born to Mr. and Mrs. Carlos V. Arandela of Belleville July 9 at Clara Maass Medical Center, Belleville. Birth weight was 8 pounds, 5 ounces.

Mrs. Arandela is the former Teresita Cruz, daughter of Catalina Cruz of Belleville. Mr. Arandela, son of Mr. and Mrs. Castor Arandela of the Philippines, is a respiratory technician at St. Joseph's Hospital, Paterson.

### James Theodore Del Grosso

A second child, a son, James Theodore, was born to Mr. and Mrs. James Del Grosso of Belleville May 3 at St. Barnabas Medical Center, Livingston. Birth weight was 9 pounds, 5 ounces. He joins Dana Elizabeth, four.

Mrs. Del Grosso is the former Nanette Visicaro, daughter of Mr. and Mrs. Anthony Visicaro of Belleville. Mr. Del Grosso, son of Mr. and Mrs. Theodore Del Grosso of Belleville, is with the Belleville Police Dept.



Mr. and Mrs. Edward Byrne

## Mr. and Mrs. Byrne celebrate 50 years

Mr. and Mrs. Edward Byrne of Toms River, formerly of Newark, celebrated their 50th wedding anniversary July 26.

A party in their honor was held July 21 at Llewellyn Furns, Morris Plains, hosted by their three daughters and their spouses, Barbara and Patrick Tobin of Woodbridge, Carol and Robert Cashill of Ran-

dolph and Patricia and Joseph Wren of Belleville. Also helping to celebrate were their eight grandchildren and other family members.

Mr. Byrne and the former Ruth Lang of Newark were married in St. Peter's Church, Belleville, in the presence of Catherine Donnelly and the late Donald McKinstry.



Anne Marie Glunk — Carmen Cerreto

## Anne Marie Glunk, Carmen Cerreto to wed

Mr. and Mrs. Charles Glunk of Belleville announce the engagement of their daughter, Anne Marie, to Carmen Cerreto, son of Mr. and Mrs. Joseph Cerreto, also of Belleville.

Miss Glunk, an alumna of Belleville High School, is a nail technician. Mr. Cerreto, a graduate of Bel-

leville High School, attends Montclair State College and is a service specialist with PSE&G. He served in the Marine Corps and is currently in the Marine Corps Reserve.

The wedding is planned for Dec. 31.

# ADVERTISE!

## MEDICALLY SPEAKING

### HOARSENESS

Q: What is hoarseness?

A: Hoarseness is an alteration in the normal production of the voice by the vocal cords.

Q: What are the causes of hoarseness?

A: Most cases are caused by infection (laryngitis). Some others are related to voice abuse, environmental exposure, or smoking, which can cause vocal cord nodules and polyps.

Q: Who should have an examination by a throat specialist?

A: Anyone who has hoarseness persisting for two weeks.

Q: Have there been recent advances in the diagnosis of hoarseness?

A: Yes. With the FLEXIBLE FIBROPTIC LARYNGOSCOPE, a complete examination of the voice box can be done in the office without discomfort.

Q: What if I need surgery?

A: Surgery can be done under general anesthesia on an outpatient (same day) basis. All removed tissue is sent for a biopsy study. Modern techniques such as the OPERATING MICROSCOPE and, in indicated cases, LASER, allow accurate and precise surgery. Recovery is rapid with patients able to resume most activities the next day.

## MEDICAL & SURGICAL EAR, NOSE & THROAT GROUP

Bruce E. Gordon, M.D. 562 Kingsland Street  
5 Franklin Avenue Nutley, N.J. 07110  
759-4005 235-1400

Arthur I. Lester, M.D. 123 Ridge Road  
No. Arlington, N.J. 07037  
997-2347

## EVENTS IN THE AREA

### Support groups...

Adult Bereavement Group, sponsored by The Hospice, 7 to 8:30 p.m. through Sept. 12, 34 label St., Montclair. For more information, call 783-7879.

Alzheimer's Family Support Group, 7:15 Aug. 30, Park Manor Nursing Home, 23 Park Place, Bloomfield.

Overeaters Anonymous, self-help group for compulsive overeaters or people with eating disorders, 8 p.m. Tuesdays, Bethany Lutheran Church, New and Joralemon streets, Belleville. For more information, call 759-0770; 8 p.m. Wednesdays, Christ Church, Park and Bloomfield avenues (opposite Grand Union), Bloomfield. For more information, call 746-4658.

Living with Cancer, for cancer patients and their families, 7 to 8:30 p.m. second Wednesdays, Mountsinai Hospital, Montclair. 429-6140 or 429-6128.

Recovery Inc., a community mental health self-help group for persons who suffer from nervous symptoms and fears, 7:30 p.m. Wednesdays, Parks Dept., 44 Park Ave., Nutley. For free literature, call 766-7466.

Make Today Count, a support group for patients and families dealing with cancer and other life-threatening illnesses, 7 p.m. Mondays, Clara Maass Medical Center, Belleville. 450-2230.

### For singles only...

Social dancing for singles, 7:30 to 11:30 p.m. every Friday, Franklin Reformed Church, 45 Hillside Crescent, Nutley. For more information, call 284-0639 after 5 p.m.

The Singles Connection, single, widowed, divorced, separated, first and third Thursdays, 7:30 to 10:30 p.m., Grace Episcopal Church, 200 Highfield Lane, Nutley. Rap groups, music, dancing. \$5. Wine, soda, snacks and dessert served. For more information, call 235-1177.

Ballroom dancing, 8 to 11 p.m. Friday nights, 561 Franklin Ave., Nutley. Free beginner lesson. No age limit. \$5. For more information, call 677-2944.

### Meetings...

Ladies auxiliary, Stuart E. Edgar Post 493, VFW, 8 p.m. Aug. 14, post home, 271 Washington Ave., Nutley. Membership open. Write to the group at 376 Chestnut St., Nutley, 07110.

### Fairs, flea markets, rummage...

Outdoor flea market, crafts show, baseball cards, 9 a.m. to 5 p.m. Aug. 19, Essex County Hospital Center grounds, 125 Fairview Ave., Cedar Grove. 75 vendors. Free admission. Fundraiser for Community Mental Health Services. For information, call 997-9535.

Yard sale, sponsored by Friends of the Belleville Public Library and Information Center, 10 a.m. to 4 p.m. Aug. 3, 4, 16 Rutgers St. Donations of everything except clothing accepted now to sale date at 16 Rutgers St. For information, call 759-2207. Rain dates: Aug. 10, 11.

### Fundraisers...

Atlantic City bus trip, sponsored by St. Mary's Hospital Guild, Aug. 20. Buses depart from St. Mary's at 8:30 a.m. from Skytowne at 8:45 a.m. to the Taj Mahal. \$18 per person includes \$5 coins, \$5 food, \$5 deferred. For reservations, call the Hospital Gift Shoppe at 470-3047 or Olga Kalembe, chairman, at 340-2975.

"The King and I" at the Fiesta Dinner Theatre, sponsored by St. Mary's Hospital Guild, 11 a.m. Aug. 29, Fiesta Dinner Theatre, Rt. 17, Wood-Ridge. \$30 per person. Lunch, strolling musicians, ample parking. Aug. 16 deadline for reservations. Call Rachel Centi at 473-3533 or St. Mary's Hospital Gift Shoppe at 470-3047.

Chinese auction, 7:30 p.m. Aug. 31, St. John's Episcopal Church, 215 Lafayette Ave., corner Passaic Ave., Passaic. \$3. Doors open 7 p.m.

Festival in the Park, sponsored by Kingsland Trust, Nutley Historical Society and Nutley Parks and Rec Dept., 10 a.m. to 5 p.m. Sept. 9, Memorial Park. Rain date: Sept. 23. Juried crafts, art and collectibles only. Food and beverages offered by civic organizations. For space reservations at \$20, call Doug Eisenfelder at 667-3013 evenings.

### Other events...

Annual pilgrimage to Canada, sponsored by Bloomfield Knights of Columbus, Aug. 5 to 11. \$305 per person, double room occupancy, includes bus, six nights lodging. Few reservations available. Call Rose Ruffalo at 734-8688.

Special event, featuring contests and prizes, puppet skits, illustrated stories, flaming Bible, disappearing balls of fire, six foot bird that chirps out stories, 7:30 p.m. Aug. 6, 7, 9, Nutley Assembly of God, 65 Bloomfield Ave. Ages 5 to 12. Free.

CPR and first aid classes, 7 to 10 p.m., Aug. 7, 14, 21, Nutley Chapter, American Red Cross, 169 Chestnut St. \$30. Pre-registration required. Call AnnMarie at 667-3818 9 a.m. to noon and 1 to 4 p.m.

Vacation Bible school, 9 a.m. to noon; Aug. 13 to 17, Vincent United Methodist Church, Vincent Place, Nutley. Ages 4 through completion of 6th grade. \$5. To sign up, call the church office 9 a.m. to noon at 667-5440. All welcome.

Trip to Pennsylvania and Atlantic City, sponsored by Nutley Elks, Aug. 25, 26. Includes transportation, accommodations at West Chester Inn, breakfast, party, dinner and show at Three Little Bakers Dinner Theatre, day at Claridge Casino. \$120, two in a room. For more information, call Claire Pepe at 284-0831 or Carol Coleman-Geney at 235-1234.

Auditions for "Mame," 7 p.m. Sept. 10, 11, 12, Glen Ridge Middle School auditorium, 225 Ridgewood Ave., between Belleville and Bloomfield avenues. Needed: actors, singers, dancers. Show dates: Nov. 16, 17, 18. Bring your own music, preferably a show tune. Also readings from the script. Dancers will be asked to learn a short routine. Backstage workers also welcome. For more information, call 748-5327 evenings. Produced by Glen Ridge Mayor's Committee on Cultural Affairs.

Trip to Niagara Falls and Toronto, Canada, sponsored by Essex County Life Member Club of the AT&T Telephone Pioneers of America, Sept. 10 through Sept. 14. \$305 per person, double room occupancy, includes transportation, accommodations, meals, activities, entertainment. Single supplement \$90 extra. For more information, call Harry Flaherty at 743-0572 or Rocco Perma at 759-4578.

Fall trip to Vermont, sponsored by Bloomfield Knights of Columbus and Columbiennes, Sept. 13 through 16. Motor coach, several meals, sightseeing, motel, admissions to attractions. For information and reservations, call Rose at 734-8688 or John at 743-3903.

Ring in of the Decade of the Brain, sponsored by Dystonia Medical Research Foundation, 10 a.m. to 4 p.m., Nichols Park, Nutley. Picnic, awards, brief ceremony at 1 p.m., bell-ringing at 2 p.m. Admission free. Public invited. Help needed to plan the event. For more information or to volunteer, call 661-3978.

## Clara Maass Medical Center needs summer volunteers

If you can spare just two hours a week, you can make a difference for patients and visitors at Clara Maass Medical Center, Belleville. Volunteers are needed year round at the medical center but especially so during the summer months when volunteers and staff take vacation.

Volunteers with good people skills and an interest in computers are needed to work at the Information Desks in the main lobby and the Continuing Care Center lobby. In this vital position, volunteers assist visitors with patient information and directions. Presently, there are openings on Sundays during the day and evening.

Men and women of all ages, in good health, are needed to help in patient transportation. Volunteers will transport patients in wheelchairs upon admission and discharge and to and from tests and therapy. Volunteers are needed days and evenings.

Volunteers are also needed at meal time to feed patients and to set tables for meals in the nursing home. Volunteers are needed from 11 a.m. to 1 p.m. and from 5 to 7 p.m.

If you are interested in any of these vital positions, or in exploring other options, call the volunteer office at 759-2577. Assignments are available from 8 a.m. to 8 p.m., seven days a week.

## Research works.

American Heart Association



GRAND  
UNION

SAVE 4 WAYS!

1  
RED DOT  
SPECIALS

2  
EVERYDAY  
LOW PRICES

3  
SUPER  
COUPONS

4  
UNADVERTISED RED DOT SPECIALS

SAVE BIG WITH THESE SUPER COUPONS!

SUPER COUPON

Buy One  
Get One

FREE

Get One 1-Lb. Pkg. - Capellini or  
Creamettes Linguini  
or Mostaccioli Rigati

When you purchase one 1-Lb. Pkg. Creamettes Capellini,  
Linguini or Mostaccioli Rigati at our regular low price.  
Coupon Good July 29 Thru Aug. 4.  
Limit One Coupon Per Family.

(619)

GRAND  
UNION

SUPER COUPON

White, Yellow or Blue - 300-Sheet Roll

Charmin Plush  
Bath Tissue

One  
Pkg. of  
4 Rolls

99¢

No Minimum Purchase Required With This Coupon. Good  
July 29 Thru Aug. 4. Limit One Coupon Per Family.

(646)

GRAND  
UNION

SUPER COUPON

Regular or Homestyle

Orange Juice Not from Concentrate

Tropicana  
Pure Premium

One  
Half Gal.  
Carton

199

No Minimum Purchase Required With This Coupon. Good  
July 29 Thru Aug. 4. Limit One Coupon Per Family.

(647)

GRAND  
UNION

SUPER COUPON

Meat

Hygrade's  
Hot Dogs

One  
1-Lb. Pkg.

69¢

No Minimum Purchase Required With This Coupon. Good  
July 29 Thru Aug. 4. Limit One Coupon Per Family.

(667)

GRAND  
UNION

SUPER COUPON

Chunk Style in Oil or Water

Chicken of the  
Sea Light Tuna

One  
6.5-oz. Can

48¢

No Minimum Purchase Required With This Coupon. Good  
July 29 Thru Aug. 4. Limit One Coupon Per Customer.

(615)

GRAND  
UNION

SUPER COUPON

Natural - High in Potassium

Fresh  
Mushrooms

One  
10-oz. Pkg.

99¢

No Minimum Purchase Required With This Coupon. Good  
July 29 Thru Aug. 4. Limit One Coupon Per Family.

(614)

GRAND  
UNION

Plus; RED DOT SAVINGS IN EVERY AISLE!

Locally Grown - 2 1/4" Minimum

Freestone  
Peaches

Lb.

69¢

75% Lean

Fresh  
Ground Beef

In Pkgs.  
of 3-lbs.  
or More.

Ea.  
Lb.

138

Assorted Flavors

Hi-C Fruit  
Drink 3-Pack

Three  
8.45-oz.  
Conts.

2

100¢

California - The Natural Snack

Seedless Red  
or White Grapes

Lb.

89¢



# Belleville Times SPORTS

## BUC SHOTS

By Mike Lamberti



### Belleville Jr. Legion team going to state tournament

We start this week with good news from the Belleville Junior Legion baseball team. **Jim Landon's** team has qualified for the prestigious state tournament, based on its second place finish in regular season play this summer.

Belleville will join Park Ridge, West Paterson, Secaucus, Hawthorne and Bloomfield as teams from the local legion league that are moving on to the states.

"I don't know the schedule yet," Landon said about the state schedule. "We're in, but who and where they play is still up in the air. I know the tourney should start the week of August 11."

To prepare for the states, the team will be playing a series of practice games. Landon was hoping to get about two or three games in this week, with the same set up for next week.

Good luck to the Jr. Bucs as they prepare for play the states best legion teams.

#### SPORTS NEWS

I'm not going to get into a political statement about the National Anthem or the way it's supposed to be sung, but **Roseanne Barr** made an absolute mockery of our nations song last week in San Diego.

You know things are bad when the fans in San Diego start booing anything, much less the singer of the National Anthem. Barr's response to all the hoopla was that she would sing "my" National Anthem any way she pleased.

Forget the fact that it's our nations song and should be sung with a certain amount of respect. Her antics at the end of the song were also amusing. (You probably know what she did, so it's not worth dignifying).

It's been publicized that Roseanne Barr makes about \$5 million a year doing her weekly skits. She has done quite well, you know, living the American dream. Her thanks for her marvelous living is to sing our nations song with total irresponsibility. She's just another example of someone who doesn't know how well they've got it in America.

**Imus in the Morning** can't get back from vacation quick enough for this writer. While Imus is on vacation from WFAN radio, we get to listen to **Chris Russo** give his irrelevant thoughts about sports.

Thankfully, **Mike Francesca** has joined the morning set up this week and should add a little substance to the show.

Russo's latest brainstrom concerns the Giants linebacker, **Lawrence Taylor**. According to Professor Russo, since this is July, Taylor doesn't want to play professional football and would rather be on the golf links. So, he'll hold out until August or so, then sign when he feels he wants to play football.

The same day, in the newspaper, there was a picture of **Joe Montana**, the Niners quarterback, doing the normal drills that go along with summer camp. Montana, the most popular player in the NFL today, going through summer camp. According to Russo's logic, Montana shouldn't be in camp, either. He should be doing an LA Gear commercial or something.

It's been reported that Montana will have his contract renegotiated and will probably be the highest paid player in the NFL. But Montana is in camp. Taylor should be there, too. You know perfectly well that a guy of Taylor's stature is going to receive the money he deserves. The holdout makes absolutely no sense, because Taylor is missing valuable time. More importantly, if he goes to camp and let's his agent do the negotiating, it seems a more professional approach.

You just can't go in, train in two weeks and expect to be ready for an NFL season. **Phil Simms** did the same thing last year and had a pretty down season. He also had his most injury plagued campaign since 1983.

Getting back to Russo, he just wouldn't let up last Monday morning in talking about Francesca's agreement to work the morning show for two weeks. Everyone I tuned into the station, there's Russo getting on Francesca about the way Francesca worked out his morning schedule.

Who cares? The guy thinks he's amusing, but he doesn't realize that if it weren't for Francesca, he wouldn't be working on prime time anyway. Russo, the king of diction, also has the nerve to criticize other announcers. (Jay Johnstone comes to mind right away) and gets impatient with fans who have been waiting on hold for God knows how long trying to talk to this sports whiz.

Maybe Russo should understand that when a caller gets on the air, the caller shouldn't be told to hurry up. Maybe the caller is a little nervous, maybe it takes the a second to get the thoughts together. Perhaps Russo should also realize that without callers, there might not be fans, which would mean lower ratings and consequently, no job.

Last Tuesday, the twosome decided to take some calls on the **George Steinbrenner** mess. It was 6:27 a.m., with a 6:30 a.m. news update coming up. They took four calls and the callers got in maybe twenty seconds of conversation. However, Russo still found the time to criticize all four callers for not bringing anything of relevance to the show. This guy is on four and half hours a morning or afternoon and has yet to bring any relevance to his show. I'm sure everyone in the New York area just loves hearing about the San Francisco Giants and Russo's golf game every half hour.

You think of some of the great sports voices over the years and you come up with **Red Barber**, **Jack Buck**, **Lindsay Nelson**, **Curt Gowdy** and **Johnny Most**. Others like **Tim McCarver**, **Bob Costas** and **Joe Morgan** are outstanding younger sportscasters. The other day, former Yankee announcer **Frank Messer** did a game for CBS radio. The guy has been a pro for so many years and hearing him is always enjoyable.

Francesca is one of the best on the radio today in interviewing and analyzing situations. There are many talented sportscasters out there. Where did Russo ever come from?

Speaking of Steinbrenner, the guy did pretty well. He has turned the reigns over to his son, **Hank Steinbrenner** can say he was anxious to give up some of the power, anyway and it still

(continued on page 13)

### Little League team gains finals

## Dena, Capozzi pace Allstars

The Belleville National Little League squad made quite a run in this years district tournament, advancing to the championship round before falling to Nutley. The team won four games, many of which came in impressive fashion, en route to the title game.

In the first game, Belleville stopped St. Francis of Newark by a 12-0 count. **Brian Dena** hurled a no hitter and the offense was paced by **James Constantino** (homerun) and **Jeff DePier**, who contributed two RBIs.

In the second game, Belleville staged a late rally and stopped Bloomfield Mid Town, 6-2. Belleville scored four times in the fifth and added two more in the sixth to gain control of the game.

Key hits were turned in by **John Brbette**, **Mike Schmitt** and **Constantino**. **Jason Dunn** and **Dena** contributed to the offense with homers.

Dunn hurled a complete game for Belleville, allowing just two runs and three hits.

Bloomfield remained the competition in round three, but this time, the opposition was Bloomfield Central. The offense was in high gear here, as Belleville prevailed 13-0.

Dena pitched a one hitter and contributed a home run and double. **Mike Capozzi** came through with a double.

The teams first loss in the tourney came at the hands of the Nutley American League team. Belleville was limited to two runs on six hits. Capozzi was 2 for 2. **Ken Bolhart** and **Chris Rotundi** contributed RBI singles.

Belleville advanced to the Dis-



NATIONAL LEAGUE ALLSTARS - Belleville's Little League baseball players were honored Sunday, July 22 at the League's second annual awards breakfast. In addition to the Allstars, every player received either a certificate or a trophy to remember this exceptionally fine season.

trict 8 title game by stopping Harrison 8-4. Schmitt turned in a fine pitching performance, gaining the victory. Dena pitched an inning of relief and was credited with the save.

Trailing 3-2, Belleville went ahead on a two run single by Capozzi. Harrison tied the score at four in the fifth inning and consequently, the game went into extra

innings.

In the top of the seventh, Belleville scored four times, collecting four hits in the rally. Dena had a two run homer in the decisive inning.

Dena was 3 for 3 in the game, continuing his torrid hitting in the playoffs. Dunn had a double in the game, too.

In the title game, Belleville lost to a hard hitting Nutley squad, 13-4.

Belleville trailed early, but came back to tie the game at four. Dena had a triple and Capozzi delivered a single to tie the game.

But that was all the runs Belleville would tally as Nutley went ahead for good in the fourth inning. The victory moved Nutley to the sectional portion of the Little League playoffs and concluded a very good summer of baseball for Belleville.

### Ferrughelli, Serritella lead way

## Flashback! '66 Bellboys blast Bengals

This week's Flashback takes us to the 1966 football season. After losing its opener to East Orange, the Belleville Bellboys traveled to Foley Field to take on Bloomfield High School. The Bellboys had lost a tough 7-6 decision to East Orange on opening day and were geared for a strong game with the Bengals.

Where were you in '66? If you needed to move somewhere, you could have called Jos. Rasser, who was located on Cortland Street in Belleville. The Fidelity Union Trust Co. was offering "horse sense" loans. July Cleaners was the place to take your shirts.

Nuncio Pico was the mayor of Belleville then. Toilet seats at Gantner's were running for \$2.88, a full dollar off the regular price.

This article appeared in the October 6, 1966 issue of the Belleville Times. It was written by Steve Charon.

Striking hard and fast, the Bellboys swamped Bloomfield Monday afternoon at Foley Field with a 27-0 tally in a make up game left over from Saturday's cancellation caused by a rain out. Along with the

stunning victory was the highest point production in three seasons—the highest since the 30-0 Thanksgiving Day slaughter over Orange back in 1963.

A powerful Belleville defensive line held the Bengal to a minus 13 yards, continually harrying the Bloomfield quarterback. The shut-out evened the high spirited Bellboys record at 1-1 with Saturday's traditional big game with Nutley ahead. They dumped Bloomfield 10-0.

Having learned their lesson well in the 7-6 opening day loss to East Orange, the Bellboys were hitting on all eleven cylinders right from the start. With Bloomfield starting the game in possession of the ball, Sam Calabria and Armondo Conte blitzed through to dump Bengal field general Joe D'Angiolillo into a fumble. Jim Serritella recovered and Belleville took over on the Red and Grey 33 yard line.

From there quarterback Rich Del Guercio had Steve Ferrughelli, Mario Ponzio and Mike Welsh batter away at the Bloomfield line until Ferrughelli dived across from the two-yard line ten plays later to

set the pattern of the day against the demoralized and down-trodden Bengals.

From then on it was more of the same. Belleville had a holding penalty kill one drive before Ferrughelli scored again to cap a 50 yard march late, in the second quarter.

Moving into the starting backfield for the first time since joining the team late, Welsh did much of the early carrying before alternating with his running mates Ponzio and Ferrughelli. Carrying 16 times, the senior back completed 41 yards at a steady pace for a 2.5 per carry average.

But all in all, it was Ferrughelli who made the difference. The six-foot-two 190 pounder had been the one who led the attack throughout the pre-season schedule before running into trouble last week against East Orange's fast line.

Starting as flanker rather than fullback, the big senior made good use of some early carries to prove he had regained scrumming form. Carrying more and more steadily as the game went on, Ferrughelli ended up leading the Bellboy attack

with 81 yards on 15 carries for a 5.4 average.

At the other running post, the director of Belleville's stalwart defense, Ponzio, doubled in fine form. Pulling off a 54 yard gain to the Bengal one in a single sweep, this co-captain compiled 76 yards overland in six tries.

All of this power was directed by Del Guercio, who ran for 42 yards himself on a conglomeration of bootlegs and snakes to the give Belleville 249 yards gained rushing. The junior field general went to the air three times, once hitting co-captain Rich Sam Filippio with a 16 yard TD toss. Del Guercio accounted for the other score, himself, sneaking over from the one yard line after Ponzio's long gallop.

Much of the credit for the impressive showing has to go to the resurgency of the line. Without their excellent blocking, none of this would have been possible—all of which was a fitting birthday present for line coach Pat Forte.

One of the biggest factors here was Mike Matejka who made the conversion from end to tackle in

(continued on page 12)

## Ruffalo wins two medals in Holland

It's been quite a busy summer for Richard Ruffalo. The Belleville teacher and coach recently returned from Holland and the Netherlands, where he competed in the World Championship Games for the Disabled.

The Games were held from July 12 through the 26th. Over 2000 athletes from 48 countries throughout the world took part in the Games.

"The crowd support was amazing," Ruffalo said. "There were over 30,000 people at the opening and closing ceremonies. The United States team won the most medals, just beating out West Germany. The U.S. team was made up of 250 people, both staff and athletes."

At the Games, Ruffalo earned two silver medals in the shot put and discus. In the shot, Ruffalo finished with a throw of 10.96 meters. In the discus, his toss was 34.80 meters.

"The discus throw was my best ever," Ruffalo said of the 34.80.

"An East German beat me out for the gold with a throw of 35.24 meters. It was quite a battle."

The javelin throw, normally one of Ruffalo's stronger events, was cancelled because of injuries to a number of the participants. Ruffalo did compete in the event, however, throwing the javelin 41.16 meters in a different disabled classification.

"I'm pretty sure I would have won a gold in my weight class if it hadn't been cancelled," Ruffalo said. "I was pretty happy with my throw in the javelin."

The Games were culminated by a tremendous honor bestowed upon Ruffalo. He was named as one of six world wide representatives of the International Olympic Committee for the Disabled. He will serve on the Athletes Commission of one of the regions of the world.

"Six people from over 2000 in the Games were selected to serve on a committee that will determine the

future of handicapped sports. It will go hand in hand with the Olympics," Ruffalo said. "I was very proud to be named to the committee. Two of the six were chosen from the U.S. team."

Before heading to Holland, Ruffalo competed in the National championships in June, with his usual outstanding results.

Ruffalo won gold medals in the shot put, discus and javelin. He also finished very well against sighted athletes at the TAC Masters Championships, which were contested back on June 2 of this year.

In the 35-39 age group, Ruffalo earned a state championship in the javelin and discus and finished second in the shot put.

"I was very happy with that because it shows that handicapped is only a state of mind," Ruffalo said.

Ruffalo coached the U.S. power lifting team to three world titles. Also in 1990, he won three gold medals in the shot put, discus and

javelin at the Garden State Games, held on July 7.

Ruffalo has a busy agenda ahead of him. He will be coaching the U.S. power lifting team in the World Cup in Australia in 1991. He should also participate in the Can-Am Pacific championships in Toronto in 1991.

In 1992, Ruffalo hopes to compete in the ultimate athletic event, the Olympics for the Disabled. Ruffalo did very well in the 88s games, winning two medals in Seoul, South Korea.

"In 1988, our Olympics came after the Olympic games," Ruffalo said. "This time, we're hoping to pre-empt the Olympic games." Ruffalo also expressed thanks to his many sponsors and fans for all their support during his competition in Holland.

Congratulations to Ruffalo on an excellent performance in Holland and on being named to the very prestigious committee on the future of handicapped athletics.

# RECREATION ROUNDUP

## Soccer & touch football applications

Applications for the Belleville Recreation 1990 Fall Sports programs are now available in the schools and at the Recreation office. Boys and girls ages 7-14 may participate in recreation soccer. Belleville resident children who will be 7 by Dec. 31 and who will be no older than 14 on Dec. 31 are eligible. Nobody above 8th grade can play, and all returning players must re-apply.

Boys ages 8-10 can play touch football, if they so choose. Belleville boys who will be 8 by Dec. 31 and who will be no older than 10 on Dec. 31 are eligible. All returning players must re-apply.

For both soccer and touch football, all completed applications must be returned to the Recreation Department, 407 Joramemon Street, with birth certificates. The registration deadline for soccer is Aug. 10 and the deadline for touch football is Aug. 31. Children are not allowed to register for more than one fall sport since tackle football, soccer and touch football game and practice schedules conflict.

## Junior Bucs' football

There will be registration for the Belleville Recreation Department's 1990 Junior Bucs' Tackle Football Program at the Recreation House, 407 Joramemon Street, now through Aug. 10. Boys who will be 8 years old before Sept. 1 and

who will not be 14 before Sept. 1 are eligible. Those wishing to play tackle football must weigh a minimum of 60 pounds and a maximum of 130 pounds, and no one above 8th grade can play. Players will be broken down into three teams according to specific age/weight requirements as set by the Suburban Twin County Football League.

To register, players must obtain an application from their school or the recreation department office. All completed applications with parent approval must be brought to the Recreation House by Aug. 10, with two passport size photos of the player and a copy of his birth certificate. All returning players from last year's team must re-apply. Tryouts will begin around Aug. 6. Players who choose to participate in tackle football cannot also play soccer or touch football in the same season.

## Soccer coaches needed

The Belleville Recreation Department is seeking persons interested in coaching its seven-to-fourteen year old soccer league. The league is separated into several divisions according to specific age groups.

The children learn the basics of soccer and all those attending regular practices play in all games. Games are played on Saturday and Sunday afternoons, beginning late September. All volunteer coaches will be required to attend a certifica-

tion clinic by the NYSCA before the season begins. Those interested in coaching may call the Recreation Department at 450-3422 weekdays before 4 p.m.

## Registration for fall sports

The Belleville Recreation Department office at 407 Joramemon Street will be open on Tuesday nights from 7 to 8 p.m. for Soccer/Football registration. Soccer league director Bob Travers will register people who can't get to the office during regular hours on Tuesdays, beginning July 17 through Aug. 7. Birth certificates are required for all applicants at registration and all returns must re-apply. For further information, call 450-3422. The registration deadline for tackle football and soccer is Aug. 10 while the touch football deadline is Aug. 31. No exceptions!

## Hunting permits by mail

A change in the procedure for obtaining deer-hunting permits was announced by Commissioner Judith Yaskin of the State Department of Environmental Protection (DEP).

Beginning this year, sportsmen may apply through the mail for two bow permits and two firearm permits for a total of four permits. Fewer permits will be available over the counter this year. As a

# Flashback! Defense keys Bellboys

(continued from page 11)

time to draw the assignment of containing Bloomfield's 250 pound mammoth John Ellmers.

Containing the Bloomfield co-captain, the 195 pound Mateyka paved the way for steady gains through his side while also doubling steadily on defense. Elsewhere on the line, Dave Jones, Ralph Serio, Joe Pisano and Calabria more than held their own with Gene Harvey making his debut at end.

On defense, the line was again the key holding the Bengal ground attack to naught, and dumping D'Angiolillo eight times to give Forte his birthday present.

In the secondary, some problems developed as the Bengals junior bombardier filled the air with 23 passes. Eleven of these found their mark to account for 157 yards gained. Making early use of his halfback, D'Angiolillo fed Hal Ikin in during the opening rounds until Belleville adjustments halted the efficiency of this play.

From there on, junior Ed Giardino became the primary target, but with much less success. San

Filippo, a three year veteran of the secondary, led the backfield crew with an interception but some more alert ball hawking could have accounted for three more.

Aside from Serritella's fumble recovery, Mateyka also picked up a loose ball when Conte pushed hard in the third quarter. John Idamarco duplicated the feat to lead the Bellboys final score by pouncing on a dropped punt on the Bengal 27.

Taking a 13-0 lead into the locker room at halftime, the Bellboys put the game on ice early in the third quarter. With Ferrughelli returning the kickoff 29 yards to the 40 before an offside penalty, the stage was set for Ponzio to burst around the right side and break to the left, and run 54 yards down the field before being caught from behind at the one yard line. DelGuercio's right end sneak and a conversion by Pisano followed to make it 20-0.

Idamarco's recovery of Ikin's fumble on the next kickoff started Belleville on another TD drive.

When Wells failed to gain off guard, Ferrughelli got the call and picked up ten yards in three carries before making the first in a crucial fourth and two play.

DelGuercio spotted San Filippo on the two and hit him for a 16 yard score. Pisano again added the point.

From there, things such as a dropped screen pass and 15 yard penalty stalled the Bellboys with substitutions coming in by droves. Bloomfield meanwhile got down to

the Belleville 23 after blocking a punt only to lose the ball via interception.

One other drive got the Bengals to the nine before Ponzio led defenders stiffened to hold for downs and preserve the shutout.

**EDITORS NOTES:** Other sports stories that appeared in the October 6, 1966 issue: A 195 pound running back named John Senesky had his picture in the paper as a key running back for Montclair State College. Senesky, a half back picked up 35 yards in ten carries in a recent victory. Senesky graduated Belleville in 1964. Another article indicated at Peter Rodino, a representative in the 10th district, was backing a bill that would eventually merge the National Football League and the American Football League into one league.

That, of course, became reality in 1970, when the two leagues merged to become the NFL as we know it today.

Rodino had also noted that professional football players could expect to greater benefits and relatively higher salaries. Rodino couldn't have possibly known then what salaries would be today.

The '66 Bellboys lost a tough game to Nutley 13-7 the following week. The Raiders scored the winning TD in the final seconds of the fourth quarter. Belleville went on to a fine season in '66 however, finishing 6-3.

## Garden State Deer Classic

The New Jersey Trophy Deer Program will again be held this year as the feature of the Annual Garden State Deer Classic. This

year's event is scheduled for Friday, Aug. 24 through Sunday, Aug. 26 at the Middlesex County College in Edison.

The Deer Classic is sponsored by the United Bowhunters of New Jersey, the New Jersey Federation of Sportsmen's Club and the N.J. Dept. of Environmental Protection's Division of Fish, Game and Wildlife.

The Deer Classic runs Aug. 24 from 6 to 9:30 p.m.; Aug. 25 from 10 a.m. to 8 p.m.; and Aug. 26 from 10 a.m. to 4 p.m. at the College Center of Middlesex County College, 155 Mill Road, Edison. The program includes the presentation of awards in seven categories; "How to" seminars and films and videos to give sportsmen advice on practical advanced hunting techniques.

The objective of the Deer Classic is to recognize the quality of New Jersey's deer and the ability of the sportsmen and women who successfully hunt for them.

On display will be more than 50 of the largest deer taken in New Jersey during the 1989 deer season.

Middlesex County College can be reached from Route 1, Route 287 and the N.J. Turnpike. Admission is \$5 per day, children under 10 are admitted free.

### NOTICE

The Zoning Board of Adjustment of the Township of Belleville, N.J. will hold its regular monthly meeting on Tuesday, August 7, 1990 at 7:30 p.m. in the Council Chambers, Town Hall.

Mary Lou Hood, Municipal Clerk  
Belleville Times  
Aug. 2, 1990  
Fee: \$3.76

No. B90-344

### NOTICE

The Belleville Planning Board will conduct a work-session meeting on Wednesday, August 8, 1990, at 7:30 P.M. at 383 Washington Ave. Second Floor Meeting Room. Applications on the board's agenda will be heard at the regularly scheduled meeting on Thursday, August 9, at 8:00 P.M. at the same location.

Joseph E. Doyle  
Chairman, Belleville Planning Board  
Belleville Times  
Aug. 2, 1990  
Fee: \$5.17

No. B90-345

COUPON  
SPECIAL  
CAR WASH

\$4.50 + Tax

For Full Service

Exterior \$3.75 + Tax

(With This Coupon)

EXPIRES 12/31/90

FRANKIE'S  
FUTURMATIC  
BRUSHLESS  
CAR WASH

305 Broad St. • Bloomfield  
748-9459

Open Mon. - Sat. 8-5  
and Sun. 8-3

REMEMBER WHEN  
IT WAS REALLY  
FUN TO BUY  
A NEW CAR?

COME ON HOME TO  
BIGELOW

WHERE WE SELL CARS LIKE THEY DID IN THE GOOD OLD DAYS!

NO PHONY BALONEY  
YOU GET GOOD CARS — AT FAIR PRICES  
WITH SERVICE THAT BRINGS YOU BACK FOR MORE  
... AND A FRIENDLY, FAMILY ATMOSPHERE YOU'LL APPRECIATE!

BUY OR LEASE ON THE MOST GENEROUS TERMS!

SAVE \$1,696

1990  
PLYMOUTH SUNDANCE

5 dr. Liftback, 2.5L 4 Cyl Eng. Auto, Air Cond, TIG, Tilt, Rear Def, 2-tone Paint, Cast Alum Wheels.  
VIN #LN221569 Stk #2910

MSRP .....\$11,651  
BIGELOW DISCOUNT .....\$946  
CHRYSLER REBATE .....\$750

BUY FOR  
**\$9,995**

LEASE FOR \$199.54  
for 48 mos.

SAVE \$2,610

1990  
CHRYSLER  
LEBARON COUPE

2 dr., 2.5L EFI eng. Air Cond, Auto Trans, Rear Def, Tilt, Cruise, Power Brks, Strng, Windows, Door Locks & Heated Mirrors, AM/FM Stereo.  
VIN #LG408920 Stk #2579

MSRP .....\$14,609  
BIGELOW DISCOUNT .....\$1,610  
CHRYSLER REBATE .....\$1,000

BUY FOR  
**\$11,999**

LEASE FOR \$267  
for 48 mos.

SAVE \$1,379

1990  
PLYMOUTH VOYAGER SE

Mini-Van, 7 Pass, 3L V-6 Eng, Auto Trans, Air Cond, Rear Def, Roof Rack, AM/FM Stereo.  
VIN #LR729985 Stk #2926

MSRP .....\$16,137  
BIGELOW DISCOUNT .....\$1,379

BUY FOR  
**\$14,758**

LEASE FOR \$264  
for 48 mos.

SAVE \$3,725

1990  
CHRYSLER NEW YORKER  
5TH AVENUE

4 dr. sed, 3.3L V-6 Eng, Auto Trans, Air Cond, TIG, Mark Cross Leather, Power Wind, Seats, Mirrors, AM/FM Stereo Cassette, Q-head Console w/into center, much more.  
VIN #LSD46807 Stk #2880

MSRP .....\$25,068  
BIGELOW DISCOUNT .....\$2,725  
CHRYSLER REBATE .....\$1,000

BUY FOR  
**\$21,343**

LEASE FOR \$422  
for 48 mos.

BIG  
ON SERVICE

BIGGER  
SELECTION

BIGGEST  
SAVINGS

THAT'S WHAT YOU GET AT

BIGELOW

CHRYSLER PLYMOUTH

50 Washington Avenue  
Belleville, N.J.  
759-4220

WE'RE MINUTES FROM YOU!

- 5 min. from NEWARK
- 5 min. from N. ARLINGTON
- 5 min. from KEARNY
- 5 min. from BLOOMFIELD
- 10 min. from UNION COUNTY
- 10 min. from THE ORANGES

HOURS

Monday-Friday  
9AM-9:30 PM

Saturday  
9AM-7:30 PM

All Cars Subject to Prior Sale, Sold Separately As Is

48 mo. closed end personal lease, 15,000 mi. per yr. Limit. option to buy at their mtkt val. determined by 3rd party. Resale fee if any applied as capital cost reduction. Lease price includes tax. \$1000 capital cost reduction plus 1st mo. payment & 1 mo. ref. sec. dep. in advance. Lessee resp. at lease end for excess wear & tear. For total, multiply monthly payment x 48 and add \$1000 capital cost reduction.



# Chico Borja Soccer Camp comes to Belleville



**AGILITY DRILLS** — Athletes try their skills at ball control through the cones during recent Borja soccer camp. Camp was held at Municipal Stadium last week.



**STRATEGY TALK** — Soccer campers gather around their coach for a strategy session before recent scrimmage at Borja soccer camp. (Photos by Anthony Buccino)

## BUC SHOTS

(continued from page 11)

remains in the family. He wasn't suspended and didn't have to pay any type of fine.

Steinbrenner now gets to serve on the United States Olympic Committee, which Francesca said was very important to Steinbrenner. It's my opinion that Steinbrenner cut himself a pretty good deal. He also keeps financial control of the Yankees and will still be a major shareholder.

If the Cardinals select Joe Torre as their next manager, it's a mistake. The team should first get rid of Dal Maxvill as G.M. and make Whittey Herzog the main baseball man. Maxvill is the reason why St. Louis has taken a down turn over the past few years. His inability to make a major deal or shake up the current team caused Herzog, one of the best minds in baseball, to resign.

Torre hasn't managed a team since 1984. It's not like he has turned jobs down over the years, either. He isn't that hot a managerial item. Yet, Maxvill has raved about Torre since the managerial search in St. Louis began. The fact that Maxvill and Torre were roommates when the two played for St. Louis in the early 70's didn't have much bearing on the decision, did it?

The choice here is Don Baylor. Currently, Baylor works as batting instructor in Milwaukee. He's only 41 and is just two years removed from the game as a player. He would be a good selection because he knows the game and will earn the respect of his players quickly. He's also from the "outside" and the team could use a new perspective. However, as long as Maxvill is around, you'll see nothing but retreats coming into St. Louis.

### THIS WEEK'S QUIZ

How many times did the Yankees win 100 regular season ball games during the Steinbrenner era? What years did it happen? How did the Yanks fare overall on those seasons?



**AGILITY DRILL** — A possible future soccer pro, working on head-foot coordination.



**HEADS UP** — A coach at the Borja soccer camp gives campers direction on how to pass the soccer ball with your head. Borja soccer camp is making the rounds through New Jersey during the summer months.

### STUDENT LOAN PAYOFF PROGRAM

If you're in default on a guaranteed student loan (FISL, GSL, Stafford, SLS, or PLUS loan), you may be eligible to pay it back without penalty or collection charges. For information about this special program, call the guarantee agency that holds your loan, or call the U.S. Department of Education's toll-free number: (800) 333-INFO.

SUMMER  
SPECIAL

## Earn Extra \$\$\$\$ for Vacation Something to Sell?

You can sell it a lot faster! With our new classified coupon...

- |   |   |   |   |
|---|---|---|---|
| <input type="checkbox"/> For Sale               | <input type="checkbox"/> Instruction        | <input type="checkbox"/> Pets                 | <input type="checkbox"/> Lost & Found           |
| <input type="checkbox"/> Boats & Motors         | <input type="checkbox"/> Real Estate Wanted | <input type="checkbox"/> Wanted to Rent       | <input type="checkbox"/> Business Opportunities |
| <input type="checkbox"/> Services               | <input type="checkbox"/> Card of Thanks     | <input type="checkbox"/> Entertainment        | <input type="checkbox"/> Personals              |
| <input type="checkbox"/> Rentals: Homes & Apts. | <input type="checkbox"/> Rooms to Let       | <input type="checkbox"/> Lots for Sale        | <input type="checkbox"/> Professional Services  |
| <input type="checkbox"/> Vacation Rentals       | <input type="checkbox"/> Child Care         | <input type="checkbox"/> Wanted               | <input type="checkbox"/> Employment Wanted      |
| <input type="checkbox"/> Motorcycles            | <input type="checkbox"/> Autos for Sale     | <input type="checkbox"/> Real Estate for Sale | <input type="checkbox"/> Other                  |

Just fill in the coupon below. One word in each box.

Please send coupon plus check or money order to:

Orechio Publications, 800 Bloomfield Ave., Nutley, N.J. 07110. Attn: Classified Dept.

Name \_\_\_\_\_ Date \_\_\_\_\_  
Address \_\_\_\_\_ Phone No. \_\_\_\_\_  
No. of Insertions \_\_\_\_\_

ONE	WORD	IN	EACH	SPACE	
					5
					10
					15
				\$8.00	20
					25
		\$9.20			30
\$10.40			\$11.60		

The minimum charge is \$8.00 for the first 20 words. Each additional 3 words or line thereafter, \$1.20.

Run my ad on: Date \_\_\_\_\_

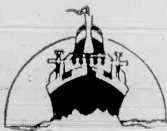
Date \_\_\_\_\_

PRESENTING

CRUISE REVUE

by

Nutley Travel Service, Inc.



**HURRY!**

Last day for making your reservations is

August 29, 1990

Reservations Accepted

on

Tuesdays and Wednesdays  
**ONLY!**

**Nutley Travel Service, Inc.**

11 Brighton Rd., Clifton, N.J.

235-1234 or 777-0440

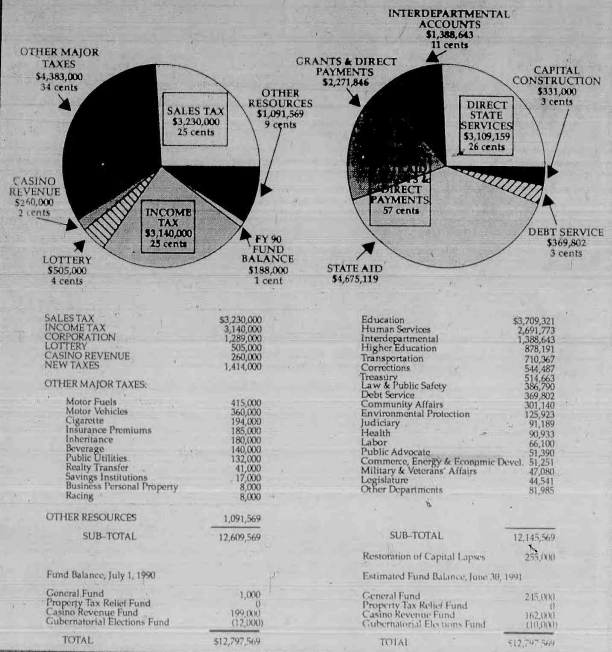
Office Hours: Monday - Friday 9-7; Sat. 10 - 2.

# NEW JERSEY BUDGET

RESOURCES AND RECOMMENDATIONS FOR FISCAL YEAR 1991  
ALL STATE FUNDS  
(in thousands)

RESOURCES  
\$12,797,569

RECOMMENDATIONS  
\$12,145,569



The chart (New Jersey Budget, resources and recommendations for fiscal year 1991) as proposed by the governor and, with a few mostly minor emendations, enacted by the state legislature. This pie chart (as it is described) tells the state budget — and state tax — story in a nutshell. An eighth-grader could figure it out — presumably.

**SHERIFF'S SALE**  
SUPERIOR (CHAM) 1-63  
SUPERIOR COURT OF NEW JERSEY, CHANCERY DIVISION, ESSEX COUNTY, DOCKET NO. F-738-89 GOLDME, PLAINTIFF vs. ELLYNE BRODIE, et al, as defendants. Execution For Sale of Mortgaged Premises. By virtue of the above stated writ of Execution, to me directed, I shall expose for sale by Public Auction, in SHERIFF'S OFFICE, Essex County Courts Building in Newark, on Tuesday, the 28th day of August 1990, at one-thirty P.M., (Prevailing Time), Municipality: Orange County Essex State of NJ, Street & Street No. 19, Hillier Street, TAX BLOCK AND LOT 38, 38 Lot 20. Dimensions of LOT 93.47 x 50.07. NEAREST CROSS STREET: 163.47 feet from Main St. A full legal description can be found in the Office of the Register of Essex County. A DEPOSIT OF 20% OF THE BID PRICE IN CASH OR CERTIFIED FUNDS IS REQUIRED AT THE TIME OF SALE. The approximate amount of the Judgment to be satisfied by said sale is the sum of TWENTY SEVEN THOUSAND THREE HUNDRED EIGHTY NINE DOLLARS AND FIFTY FOUR CENTS (\$27,389.54) together with the costs of this sale. The Sheriff reserves the right to adjourn the sale from time to time as provided by Law. New Jersey, N.J. July 23, 1990. THOMAS J. D'ALESSIO, Sheriff William M.E. Powers, Jr., Attorney Belleville Times Aug. 2, 9, 16, 23, 1990 Fee: \$78.90 No. B90-332

**SHERIFF'S SALE**  
SUPERIOR (CHAM) 1-62  
SUPERIOR COURT OF NEW JERSEY, CHANCERY DIVISION, ESSEX COUNTY, DOCKET NO. F-738-89 INDEPENDENCE ONE MORTGAGE CORP., PLAINTIFF vs. DENNIS PORTERFIELD, ET AL, DEFENDANTS. Execution For Sale of Mortgaged Premises. By virtue of the above stated writ of Execution, to me directed, I shall expose for sale by Public Auction, in SHERIFF'S OFFICE, Essex County Courts Building in Newark, on Tuesday, the 28th day of August 1990, at one-thirty P.M., (Prevailing Time). The property to be sold is located in the TOWN OF IRVINGTON in the County of ESSEX, and the State of New Jersey. Commonly known as 148 MAPLE AVENUE, IRVINGTON, NEW JERSEY 07111. Tax Lot No. 2 in Block No. 215. Dimensions of Lot (Approximately) 30.0 feet wide by 95.2 feet deep. NEAREST CROSS STREET: on the EAST-ERLY side of MAPLE AVENUE, 35.0 feet from the NORTHERLY side of NYE AVENUE. A full legal description can be found in the Office of the Register of Essex County. A DEPOSIT OF 20% OF THE BID PRICE IN CASH OR CERTIFIED FUNDS IS REQUIRED AT THE TIME OF SALE. The approximate amount of the Judgment to be satisfied by said sale is the sum of FORTY EIGHT THOUSAND THREE HUNDRED EIGHTY FOUR DOLLARS AND THIRTEEN CENTS (\$48,384.13) together with the costs of this sale. The Sheriff reserves the right to adjourn the sale from time to time as provided by Law. New Jersey, N.J. July 23, 1990. THOMAS J. D'ALESSIO, Sheriff Shapiro & Martone, Attorneys Belleville Times Aug. 2, 9, 16, 23, 1990 Fee: \$86.48 No. B90-321

**SHERIFF'S SALE**  
SUPERIOR (CHAM) 1-233  
SUPERIOR COURT OF NEW JERSEY, CHANCERY DIVISION, ESSEX COUNTY, DOCKET NO. F-576-89 APPROVED FINANCIAL SERVICES, INC., A New Jersey Corporation, PLAINTIFF vs. THE WENDY HOUSE, a Non-Profit Corporation of the State of New Jersey, et al, DEFENDANTS. Execution For Sale of Mortgaged Premises. By virtue of the above stated writ of Execution, to me directed, I shall expose for sale by Public Auction, in SHERIFF'S OFFICE, Essex County Courts Building in Newark, on Tuesday, the 14th day of August 1990, at one-thirty P.M., (Prevailing Time). ALL that lot, tract or parcel of land and premises situate, lying and being in the City of East Orange, County of Essex and State of New Jersey, more particularly described as follows: BEGINNING at a point in the Westerly side of Hoffman Boulevard distant along the same Northerly 87.70 feet from the corner marked by the intersection of the Westerly side of Hoffman Boulevard with the Northerly side of Rutledge Avenue as extended Easterly of the Delaware, Lackawanna and Western Railroad; thence (1) South 87 degrees 57 minutes West at right angles to Hoffman Boulevard 90 feet to a point in the line of said land Delaware, Lackawanna and Western Railroad; thence (2) along a line of said land North 2 degrees 3 minutes West parallel with the Westerly side of Hoffman Boulevard 87.50 feet; thence (3) North 87 degrees 57 minutes East parallel with the first course 91 feet to a point in the said Westerly side of Hoffman Boulevard, thence (4) along the said Westerly side of Hoffman Boulevard South 2 degrees 3 minutes East 87.50 feet to the point and place of BEGINNING. BEING commonly known and designated as 133-41 Hoffman Boulevard, East Orange, New Jersey. BEING also known as Lot 11, Block 10 on the Tax Map of the City of East Orange, New Jersey. BEING the same premises set forth in a Deed made by Cliff Leaning and Co., Inc. to The Wendy House, a Non-Profit Organization of New Jersey, dated October 2, 1974 and recorded with the Register's Office of Essex County on October 22, 1974, in Book 4488 of Deeds for said County, at Pages 388, et seq. A DEPOSIT OF 20% OF THE BID PRICE IN CASH OR CERTIFIED FUNDS IS REQUIRED AT THE TIME OF SALE. The approximate amount of the Judgment to be satisfied by said sale is the sum of FORTY EIGHT THOUSAND THREE HUNDRED EIGHTY FOUR DOLLARS AND THIRTEEN CENTS (\$48,384.13) together with the costs of this sale. The Sheriff reserves the right to adjourn the sale from time to time as provided by Law. New Jersey, N.J. July 23, 1990. THOMAS J. D'ALESSIO, Sheriff Robert A. Elkinton, Attorney Belleville Times July 19, 26, Aug. 2, 9, 1990 Fee: \$127.84 No. B90-330

**SHERIFF'S SALE**  
SUPERIOR (CHAM) 1-29  
SUPERIOR COURT OF NEW JERSEY, CHANCERY DIVISION, ESSEX COUNTY, DOCKET NO. F-638-89 THE NATIONAL STATE BANK, ELIZABETH, N.J., CORPORATION, PLAINTIFF vs. NEW EQUITIES INVESTMENT CORP., et al, DEFENDANTS. Execution For Sale of Mortgaged Premises. By virtue of the above stated writ of Execution, to me directed, I shall expose for sale by Public Auction, in SHERIFF'S OFFICE, Essex County Courts Building in Newark, on Tuesday, the 14th day of August 1990, at one-thirty P.M., (Prevailing Time). THE PROPERTY TO BE SOLD IS LOCATED IN THE TOWN OF IRVINGTON, IN THE COUNTY OF ESSEX, AND STATE OF NEW JERSEY. PREMISES ARE COMMONLY KNOWN AS: 11 MT. VERNON AVENUE, IRVINGTON, NEW JERSEY. LOT NO. 2 IN BLOCK NO. 270. Dimensions of LOT: 35 x 98. NEAREST CROSS STREET: UNION AVENUE. IT IS THE PLAINTIFFS' INTENTION NOT TO BID HIGHER THAN \$107,000 ON ITS JUDGMENT PLUS ACCRUED INTEREST ALLOWED BY LAW. A full legal description is available at the Office of the Register of Essex County. A DEPOSIT OF 20% OF THE BID PRICE IN CASH OR CERTIFIED FUNDS IS REQUIRED AT THE TIME OF SALE. The approximate amount of the Judgment to be satisfied by said sale is the sum of ONE HUNDRED TWENTY NINE THOUSAND FIVE HUNDRED EIGHTY SEVEN DOLLARS AND TEN CENTS (\$129,587.10) together with the costs of this sale. The Sheriff reserves the right to adjourn the sale from time to time as provided by Law. New Jersey, N.J. July 23, 1990. THOMAS J. D'ALESSIO, Sheriff Alfieri & Melinders, Attorneys Belleville Times July 19, 26, Aug. 2, 9, 1990 Fee: \$84.60 No. B90-331

Newark, on Tuesday, the 7th day of August 1990, at one-thirty P.M., (Prevailing Time). THE PROPERTY TO BE SOLD IS LOCATED IN THE CITY OF NEWARK IN THE COUNTY OF ESSEX AND STATE OF NEW JERSEY. COMMONLY KNOWN AS: 8 NORWOOD STREET, NEWARK, NEW JERSEY. TAX LOT NO. 33 IN BLOCK NO. 4066. Dimensions of LOT: (APPROXIMATELY) 37 FEET WIDE BY 100 FEET LONG. NEAREST CROSS STREET: SITUATE ON THE NORTHEASTERNLY SIDE OF NORWOOD STREET, 77 FEET FROM THE NORTHEASTERNLY SIDE OF ASHBERG PLACE. A full legal description can be found in the Office of the Register of Essex County. A DEPOSIT OF 20% OF THE BID PRICE IN CASH OR CERTIFIED FUNDS IS REQUIRED AT THE TIME OF SALE. The approximate amount of the Judgment to be satisfied by said sale is the sum of SEVENTEEN THOUSAND ONE HUNDRED FIFTY ONE DOLLARS AND SIXTY THREE CENTS (\$17,151.63) together with the costs of this sale. The Sheriff reserves the right to adjourn the sale from time to time as provided by Law. New Jersey, N.J. July 23, 1990. THOMAS J. D'ALESSIO, Sheriff Zucker, Goldberg, Becker & Ackerman, Attorneys Belleville Times July 19, 26, Aug. 2, 9, 1990 Fee: \$92.12 No. B90-298

**SHERIFF'S SALE**  
SUPERIOR (CHAM) 1-234  
SUPERIOR COURT OF NEW JERSEY, CHANCERY DIVISION, ESSEX COUNTY, DOCKET NO. F-336-90 INVESTORS AND LENDERS, LTD., PLAINTIFF vs. BRUCE WILSON, DEFENDANTS. Execution For Sale of Mortgaged Premises. By virtue of the above stated writ of Execution, to me directed, I shall expose for sale by Public Auction, in SHERIFF'S OFFICE, Essex County Courts Building in Newark, on Tuesday, the 14th day of August 1990, at one-thirty P.M., (Prevailing Time). THE PROPERTY TO BE SOLD IS LOCATED IN THE TOWN OF IRVINGTON, IN THE COUNTY OF ESSEX, AND STATE OF NEW JERSEY. PREMISES ARE COMMONLY KNOWN AS: 11 MT. VERNON AVENUE, IRVINGTON, NEW JERSEY. LOT NO. 2 IN BLOCK NO. 270. Dimensions of LOT: 35 x 98. NEAREST CROSS STREET: UNION AVENUE. IT IS THE PLAINTIFFS' INTENTION NOT TO BID HIGHER THAN \$107,000 ON ITS JUDGMENT PLUS ACCRUED INTEREST ALLOWED BY LAW. A full legal description is available at the Office of the Register of Essex County. A DEPOSIT OF 20% OF THE BID PRICE IN CASH OR CERTIFIED FUNDS IS REQUIRED AT THE TIME OF SALE. The approximate amount of the Judgment to be satisfied by said sale is the sum of ONE HUNDRED TWENTY NINE THOUSAND FIVE HUNDRED EIGHTY SEVEN DOLLARS AND TEN CENTS (\$129,587.10) together with the costs of this sale. The Sheriff reserves the right to adjourn the sale from time to time as provided by Law. New Jersey, N.J. July 23, 1990. THOMAS J. D'ALESSIO, Sheriff Alfieri & Melinders, Attorneys Belleville Times July 19, 26, Aug. 2, 9, 1990 Fee: \$84.60 No. B90-331

# Where Florio's state taxes go

(Continued from page 1)

for the lottery commission and other bureaucratic folks, this revenue is earmarked for property tax relief for the elderly. The comparatively high out of the state casino tax is among the factors in the failure of casino operations to expand in recent years in Atlantic City, except for the fiasco of the Taj Mahal.

Yes, they get you going and coming

More than one billion dollars is imposed on New Jersey residents in the category known as "other major taxes." As can readily be seen, most of these taxes are either directly placed on users (for example, beverages, cigarettes, motor fuels, motor vehicle license and registrations) or in pass-throughs (really transfer tax, insurance premiums, public utility).

Most pass-through taxes are in the "hidden" category of taxes, in that the "middle-men" do not advise their customers of the cost add-ons resulting from the state impositions. The exception to this rule is the utility companies, who do advise their customers (look at the bottom of your Public Service bill) of the state tax on the use of energy.

As has been noted from Boston Tax Party times — as a matter of historical fact, even the first English colonists at Jamestown in Virginia protested against high taxes in 1610 — "other major taxes" can pile fols sometimes more than personal income taxes can. The reason is obvious: excise taxes and pass-through taxes (often called fees or tolls) are extremely regressive. They hardly are noticed by the rich; but they eat away the nickels and dimes of middle-class families.

Corporations escape for now

Except for a new sales tax on trucking equipment and replacement parts, the Florio tax bombardment did not hike business (corporation) taxes. The word from Trenton is that higher business

taxes are out of the question, at least until another growth cycle gets underway and other states have increased their business taxes.

Already there are signs that operating a business in New Jersey is becoming too expensive (fairly high business taxes, extremely high property taxes, rising labor costs, confiscatory insurance rates, ever-increasing environmental expenditures, among others). So Florio would add to these woes with direct escalations in business taxes. The time is not right.

In 1992, when the state economy may rebound somewhat — assuming the national economy regains the growth levels of the Reagan years — Florio will probably go to

the business category for his next redistribution of earned income in New Jersey.

Please hold on to the accompanying chart, for next issue I shall introduce state spending (appropriations) in the Florio Administration budget. Until then, think about how the state government secures its revenues. This is less than number one, and you will not find it any school curriculum, except at the master's level in business administration. Politicians, those who never went beyond eighth grade or those who were graduated summa cum laude with law degrees from Harvard, know well about these taxes... all too well!

(To be continued)

## POWER 36 - OBC-TV

Schedule

THURSDAY, AUG. 2	
5:30 - 6 p.m.	Inside Corporate America
6 - 7 p.m.	Power 36 News & Views
7 - 7:30 p.m.	World Without Death
7:30 - 8 p.m.	Don McLean in Jerusalem
8 - 8:30 p.m.	News Replay
8:30 - 9 p.m.	The All New Uncle Floyd Show
9 - 9:30 p.m.	Armenia: Agony
9:30 - 10 p.m.	Power 36 Front Page Edition: Belleville. A New Beginning
10 - 11 p.m.	Power Play
11 - 12 p.m.	Rascals Comedy Hour
FRIDAY, AUG. 3	
5:30 - 6 p.m.	Power 36 Front Page Edition: Belleville. A New Beginning
6 - 7 p.m.	Power 36 News & Views
7 - 7:30 p.m.	Dave Little from the N.Y. Post presents Harness Racing Magazine
7:30 - 8 p.m.	Premiers
8 - 8:30 p.m.	News Replay
8:30 - 9 p.m.	The All New Uncle Floyd Show
9 - 9:30 p.m.	Blood and Fire
9:30 - 10 p.m.	The Continuing Forest
10 p.m. - 3 a.m.	Power 36
SATURDAY, AUG. 4	
8:30 - 10:30 p.m.	Replay of Friday's News
10:30 - 11 p.m.	Dave Little from the N.Y. Post presents Harness Racing Magazine
11 - 11:30 p.m.	The All New Uncle Floyd Show
MONDAY, AUG. 6	
6 - 7 p.m.	Power 36 News & Views
7 - 7:30 p.m.	A Second Chance
7:30 - 8 p.m.	Power 36 Front Page Edition: Belleville. A New Beginning
8 - 8:30 p.m.	News Replay
8:30 - 9 p.m.	The All New Uncle Floyd Show
9 - 9:30 p.m.	Focus on Germany, Part 1
9:30 - 10 p.m.	Focus on Germany, Part 2
10 - 11 p.m.	Power Play
TUESDAY, AUG. 7	
5:30 - 6 p.m.	Power 36 Front Page Edition: Belleville. A New Beginning
6 - 7 p.m.	Power 36 News & Views
7 - 7:30 p.m.	Focus on Germany, Part 7
7:30 - 8 p.m.	Focus on Germany, Part 13
8 - 8:30 p.m.	News Replay
8:30 - 9 p.m.	The All New Uncle Floyd Show
9 - 9:30 p.m.	Armenia: Agony
9:30 - 10 p.m.	Visions of Glory
10 - 11 p.m.	Rascals Comedy Hour
WEDNESDAY, AUG. 8	
5:30 - 6 p.m.	All Aboard
6 - 7 p.m.	Power 36 News & Views
7 - 7:30 p.m.	Scuba Diving America, Part 1
7:30 - 8 p.m.	Scuba Diving America, Part 2
8 - 8:30 p.m.	News Replay
8:30 - 9 p.m.	Mental Health and You
9 - 9:30 p.m.	Power 36 Front Page Edition: Belleville. A New Beginning
9:30 - 10 p.m.	America's War Against Illegal Drugs
10 - 11 p.m.	Power Play

**NOTICE**  
The Zoning Board of Adjustment of the Township of Belleville, N.J. on July 17, 1990 took the following action:  
Memorialized approval of Application No. 672 of William Tatz and Tax Industries for a variance and site plan approval at 1 Railroad Place.  
Interpreted the zoning ordinance as regards fences.  
Approved the following applications:  
No. 683, Charles Blochcock for an addition at 4 Academy Street.  
No. 684, Mr. & Mrs. E. Gencarelli for construction of a garage at 136 Cedar Hill Avenue.  
No. 685, Mr. & Mrs. Carlos Cuestar for an addition at 385 N. 10th Street.  
Mary Lou Hood, Municipal Clerk  
The Belleville Times  
Aug. 2, 1990  
Fee: \$9.40  
No. B90-337

**JOIN THE #1 MOVIE CLUB IN THE USA**  
With Over 13,000 Titles  
**CURRY HOME VIDEO**  
1273 Broad St., Bloomfield  
For Free Membership  
Purchase a Video Club  
Connie 338-4294

**ALBANESE ELECTROLYSIS STUDIO**  
Bathing Suit Season Is Here  
**LOOK HAIR FREE!**  
Safe and Permanent Hair Removal  
• Board Certified Professional Electrolysis  
• Member of EA of NJ & AEA  
Open Tuesday to Friday  
• Hours Start at 10 A.M.  
572 BLOOMFIELD AVE.  
BLOOMFIELD 745-6223

**SUPER SPECIAL!!!**  
COMPLETE KITCHEN  
• CABINETS  
• COUNTERTOP  
• 30" RANGE  
• 30" RANGE  
• HOOD  
• SINK & FAUCET  
**\$729.00**  
30" 2 SPEED RANGE HOOD  
**\$39.00**  
BATHROOM VANITY WITH CULTURED MARBLE TOP  
**\$69.00**  
BUY NOW & SAVE!  
**VERSA SUPPLY COMPANY**  
30 Wilson Ave., Newark, N.J.  
Tel: 589-3355  
SERVING THE HOMEOWNER SINCE 1968

Belleville Times  
Aug. 2, 9, 16, 23, 1990  
Fee: \$86.48  
No. B90-321

Belleville Times  
Aug. 2, 9, 16, 23, 1990  
Fee: \$127.84  
No. B90-330

Belleville Times  
Aug. 2, 9, 16, 23, 1990  
Fee: \$84.60  
No. B90-331

Belleville Times  
Aug. 2, 9, 16, 23, 1990  
Fee: \$16.92  
No. B90-343

Belleville Times  
Aug. 2, 9, 16, 23, 1990  
Fee: \$86.48  
No. B90-321

Belleville Times  
Aug. 2, 9, 16, 23, 1990  
Fee: \$86.48  
No. B90-321

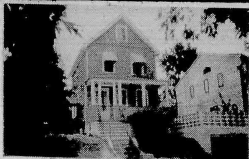


180 Centre St.  
Nutley, N.J. 07110  
667-3440

## GEORGE E. MACMUNN CO.

REALTORS

100 Woodport Road  
Sparta, N.J. 07871  
729-8727



OPEN HOUSE - SUNDAY 1-4PM - NUTLEY - 14 VALLEY RD. (between Church St. & Bloomfield Ave.) New Listing in Radcliffe School area, lg. LR, nice DR., mod. eat-in kit, Fam. Rm., 2 BR's & mod bath. New heating unit, roof 5 yrs, 2 car att. gar. ASKING \$164,900.



NUTLEY - JUST LISTED - Cute starter home, 4 bedrooms, 2 full baths (one off MBR), eat-in kit, finished Rec. Rm. w/bar. Parking for 6 cars. Maint. free exterior. ASKING \$169,900.



ask  
us...



LAKE MOHAWK - SPARTA - Beautiful West Shore loc. with lovely views of lake. Walk to beach & golf course. LR w/Frpl, formal DR, 3 BR's, 2 full baths, excellent cond. ASKING \$174,900.



LAKE MOHAWK - SPARTA - ASKING \$124,000. Owner transferred to Calif. & priced so realistically. Quiet loc. w/wonderful views from front deck. Frpl. in LR, nice DR, 2 BR's plus sitting rm. Move in cond. WHAT A BUY!!

# Special Real Estate Issue

Thursday, September 13

## The Home Front

By Nina Kaeser



### Did You Know???

Using sheets to decorate? Smart move! Don't wash them before sewing; the sizing in the fabric will make curtains and covers hang better.

If stained grout cannot be cleaned, or if it is cracked, crumbling or missing, it must be replaced. Scrape out old grout with a grout saw or scoring knife down to a depth of at least one quarter inch. Follow maker's directions with care in using new grout.

Tiny flowers — even blooms with broken stems — are great for table decor if you place them in several sherry glasses.

Plain, ordinary vinegar does a great cleaning job in bathrooms. Half-fill a plastic bag with vinegar and fit over the shower head to remove lime deposits; leave on overnight. Or lay a rubber drain stopper over the drain (weight it) or soak with vinegar and water.

Movie mogul David O. Selznick was a man who knew what he liked. So he used the same landscape designer for the movie "Gone With the Wind?" — and his own backyard!

Do you know what you like? Tell our helpful househunters about your dream house, and we'll find it for you at Century 21 Stanford Agency, 86 Union Ave., Nutley, 235-9000.

RESERVE  
SPACE  
EARLY

Call Advertising  
**667-2100**



EQUAL HOUSING  
OPPORTUNITY

We are pledged to the letter and spirit of U.S. policy for the achievement of equal housing opportunity throughout the Nation. We encourage and support an affirmative advertising and marketing program in which there are no barriers to obtaining housing because of race, color, religion, sex, handicap, familial status, or national origin.

### MAKE OFFER ON ONE OF THESE OUTSTANDING HOME VALUES

ESTATE SALE  
Move-in condition, 5 rooms on lovely 125' deep lot.  
\$167,500.

HOMEY COLONIAL  
Yantacaw 4 bedroom home with front porch, maintenance free exterior. \$169,000.

NUTLEY PARK  
8 rooms includes TV room, fireplace in living room. On 68 x 125' lot. \$179,000.

MOTHER/DAUGHTER  
4 rooms & bath both floors. Separate entrance to 2nd.  
\$204,000.

IMMACULATE  
3 bedroom Yantacaw Colonial with family room & lovely rear deck. \$179,900.

BROOKDALE'S FINEST  
7 room, 2 bath home with family room, fireplace in living room. \$189,500.

EVERYONE KNOWS

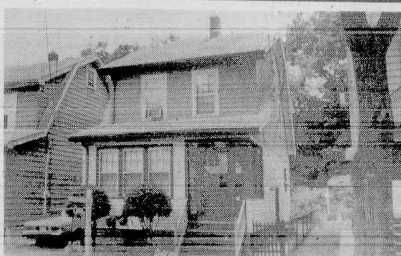
**GEORGE T. BOWES**  
YOUR NUTLEY REALTOR SINCE 1933  
681 FRANKLIN AVE. NUTLEY 667-3376



### BELLEVILLE COLONIAL

Spacious 3-Bedroom Brick Colonial, tiled Kitchen, Living Room w/Frpl., formal Dining Room, finished Basement, parquet floors throughout, lots of wood trim, large 2-car Garage. Close to bus and School No. 3.

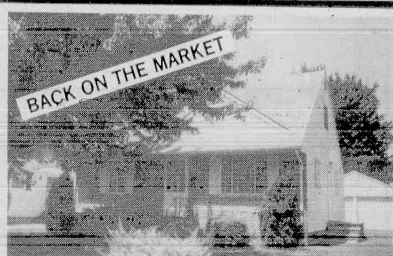
Don't miss out on this great buy at .....\$159,000



### BLOOMFIELD COLONIAL

Be the first to view this 4-Bedroom home with modern Eat-in Kitchen, 2½ baths, Family Room and more. Well maintained. Located on dead-end street.

Won't last at .....\$175,000



### BLOOMFIELD CAPE

ONE MILLION BUCKS! This newly listed expanded Cape with 4 Bedrooms, partially finished basement, 2 car garage, etc., looks that good but costs only a fraction!

Truly a bargain at .....\$164,000

Century  
21

**STANFORD AGENCY**  
86 Union Avenue, Nutley  
**235-9000**

EACH OFFICE INDEPENDENTLY OWNED AND OPERATED



# SCHOOL TIME SAVINGS



## School is Open — Drive Safely PAINTERS PLUS Interior Painting

**Wood Restoration  
Wallpaper Removal**

*We work clean, fast and efficient.*

FREE ESTIMATE

748-8289 / 703-9133

## DRIVE CAREFULLY! CHRIS NOACK CONTRACTORS

Specializing in driveways, ceilings & repairs.  
We fill cracks and eliminate water damages.

Call us now!

Prompt service at reasonable prices.  
SENIOR CITIZEN DISCOUNT

10% OFF WITH THIS AD

CALL 675-7802

## GED

Study for the GED in your own home  
in 8 short weeks.

Go to school and watch the kids  
while you are preparing for the GED.

High School Equivalency Exam.

**GED PREP**

1-800-927-0305

## VINNIE'S PIZZERIA



227 CENTRE ST.  
NUTLEY, N.J.  
667-1551

FREE DELIVERY IN  
NUTLEY and BELLEVILLE

INFANTS • WOMENS • JUNIORS  
Brand Names at Affordable Prices

For the most Popular  
Back to School Fashions

**Marlo's Fashions**

Use Our Convenient Lay-A-Way Plan

90 Franklin Street • Belleville  
(201) 751-6242

## FRIENDLY TREE SERVICE.

Pruning  
Removals  
Ornamentals

678-8888

Tony

No Job Too Small



## R.J. LYNCH & SONS

★ Painting ★ Roofing

Interior and Exterior  
Residential — Commercial.

*Our family name goes with us on every job*

748-5013

Beautify Your Home With

**SIDECO**  
Siding & Window Co.

5 FREE SQUARES

when you side your house with siding.

Vinyl Welded Replacement Windows.  
Roofing, Carpentry, Etc.

Free Estimates

482-6779 Fully Insured

We accept Visa, MC and Financing

Offer Expires 8/15/90

EXPERIENCE • DEAL DIRECT • N.Y. • N.J. • PA

## AIR-TITE CONSTRUCTION

1-800-545-9822

FREE ESTIMATES

## WINTER SPECIAL

Windows Installed

- Up to 84 U.I.
- Screen Included
- Minimum Three
- White
- 1" Insulated Glass

**\$199**  
EACH

VINYL SIDING SPECIALISTS  
VINYL SHAKE AVAILABLE

REFERENCES • INSURED • COLORS BOWS • BAYS

Limited Time Offer

## FREE GLASSES\* AT WISE OPTICAL CENTER



Back to School  
SPECIAL  
Complete Eye  
Exam  
\$30

OPTICAL WISE CENTER  
CONTACTS ARE US

EYE EXAMS AND CONTACT LENSES AVAILABLE  
BLOOMFIELD • 52 Washington St. • 743-1470

Buy a complete pair of  
glasses at regular price  
and get a second pair  
(same prescription) FREE  
from our tagged  
collection.\*  
Minimum first pair purchase  
\$75. Tints, UV and scratch  
resistant coatings are avail-  
able at regular cost. Com-  
plete glasses include frames  
and lenses. No other dis-  
counts apply. Single vision  
lenses up to 10.00 D.  
Flat-Top or T.X. Bi-Focal  
lenses only up to 10.00 D.  
4.75. Limited time  
offer.

LAB ON PREMISES  
— 1 Hour Service  
In Many Cases

## QUEENIE'S Nail Salon

272 Belleville Tpke., Kearny  
(201) 997-0008

Tips & Wraps for .....\$29<sup>99</sup>  
and get 2 nails airbrushed

**FREE!**

TUESDAYS  
Senior Citizens .....10% OFF  
WEDNESDAYS  
Reggie .....\$6.99  
THURSDAYS  
Pedicure .....\$8.99  
FRIDAYS  
Manicure .....\$6.99

HOURS:

Tues., Fri., Sat. — 11 a.m. to 6:30 p.m.  
Weds., Thurs. — 11 a.m. to 9:30 p.m.  
Sunday — 9 to 12 (Appointment Only)





# SCHOOL TIME SAVINGS



Vally Road &  
Bellevue Avenue  
Upper Montclair, NJ  
744-0734

SUPPORT GROUPS FOR  
New Mothers  
Mothers of Toddlers and  
Pre-Schoolers  
Working Mothers

FATHER'S GROUPS

PLAY GROUPS

## Restaino's

MIDTOWN SPORTING GOODS  
309 FRANKLIN AVE.  
NUTLEY, N.J. 07110

★ 667-7080 ★

See us for all your  
**Back To School Needs!**  
Russell ★ REEBOK ★ NIKE ★ Wigwam  
Sweats GYM SUITS Sox

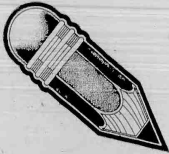


**WISE OWL Nursery School**  
617 Washington Avenue, Belleville

**MR. WISE OWL WELCOMES THE  
FALL PRE-SCHOOL CLASS**  
SEE YOU SOON!

Limited enrollment still available

Call 759-1211



## THE MAGIC COTTAGE NURSERY SCHOOL

393 WASHINGTON AVE.  
BELLEVILLE  
(In Christ Episcopal Church)



7:30 A.M. - 5:30 P.M.

**REGISTER NOW  
FOR FALL SESSIONS**  
ALL DAY KINDERGARTEN  
NURSERY & DAY CARE SERVICES  
**CALL NOW  
759-8758**

## Sandy Lane Nursery School

"A Child's World Where  
Playing Is Learning"

**REGISTER  
NOW  
FOR  
FALL  
SESSION**



634 Mill Street  
Belleville  
751-6380

Days and hours to meet your needs  
Hours: 7:30 a.m. to 5:45 p.m.  
Call or come in to register  
School open to visitors

Dedicated to a program of Early Childhood Education

Continuous day care programs for working mothers.  
Nutritionally balanced Lunch.  
State Licensed Certified School and Teachers.



## Lisa's

HAIR SALON

327½ Union Ave.  
BELLEVILLE  
(201) 450-9414



"Back To School Special"

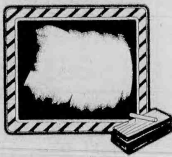
**10% OFF**

On All Services  
including Nails

**FOR STUDENTS ONLY**

• K - 8 • High School •

— WITH THIS AD —



## LOOKING GLASS CHILDREN'S CENTER

16 Bellevue Avenue • Bloomfield  
(located next to Brookdale Park)

Full and part time day care program  
for ages 2 months through Kindergarten



Mrs. Darke owner/director 338-0264



## Del Polito Hairdressers

12 Belleville Avenue  
Bloomfield, N.J.  
748-8571

(Opp. A & P Shopping Center)  
Complete Hair, Skin and Nail  
Care for Men and Women

- ★ Trend Cuts and Styling
- ★ Easy to Care for Perms
- ★ Special Effect Haircoloring
- ★ Facials
- ★ Hair Removal with Honey Wax
- ★ Pedicures
- ★ Nails... Tips... Wraps... Gel
- ★ Airbrushed Nail Art of any Color.
- ★ Combination and Design
- ★ Redken Retail Center
- ★ Brocato Haircare Products
- ★ Fohrese Distributor

Tues. & Thurs. 9 - 5 Wed. & Fri. 9 - 9  
Sat. 8:30 - 5:00

## JEWISH EDUCATION

OUR NUMBER ONE PRIORITY

BETH SHOLOM

733 PASSAIC AVE. AT RT. 3 IN CLIFTON



- Classes meet once a week — Sunday mornings 9:30 - 12:30
- Largest school in the area
- Excellent professional staff
- Creative and innovative programming
- Extensive curriculum in Hebrew and Jewish history
- Learning and experiencing Jewish traditions
- Individualized Bar and Bat Mitzvah instruction with the Cantor
- Confirmation department (post Bar and Bat Mitzvah instruction) meets weekly

Join us at our OPEN HOUSE  
Tuesday evening, Aug. 14 - 7:30 P.M. - Thursday Evening, Sept. 6, 7:30 P.M.  
SCHOOL BEGINS SEPTEMBER 3  
For information about our congregation, our school, and our beautiful Holy Day services, please call 773-0355.

The Nutley Sun

Belleville Times

Bloomfield Life

CLASSTIME

THE WORLD AT YOUR FINGERTIPS

Call: 667-3000

**AUTO SALES**

1988 JEEP CHEROKEE  
Loaded, 16,000 miles.  
Excellent condition.  
\$16,000. Call 489-3032,  
ask for Nick.

**GOVERNMENT SEIZED**

Vehicles from \$100.  
Ford, Mercedes,  
Corvettes, Chevys.  
Surplus Inventory Guide  
(1) 855-677-6000  
Ext. S-2939

**AUTOS  
WANTED**

A & N AUTOMOTIVE  
Pays top dollars for junk  
cars in any condition.  
Must have title and  
wheels. Inneed, pick-up  
anytime. Call 661-9982

**AUTO  
WRECKERS**

JUNK CARS WANTED  
Free A-Pay-Any  
"Same Day Pick-Up."  
(In Most Cases)  
S.O. TOWING, INC.  
429-4471 Bloomfield  
481-2610 Newark

**GENERAL  
NOTICES**

A WONDERFUL  
FAMILY EXPERIENCE  
AUSTRALIAN,  
EUROPEAN,  
SCANDINAVIAN,  
YUGOSLAVIAN HIGH  
SCHOOL EXCHANGE  
STUDENTS ARRIVING  
IN AUGUST. BECOME  
A HOST FAMILY!  
AMERICAN INTER-  
CULTURAL STUDENT  
EXCHANGE.  
CALL 1-800-SIBLING  
FREE CATALOG  
Beauty Supplies  
Household Products  
All developed w/out the  
crucy of animal testing.  
Located at: Super Nutter  
4 Clive Pl. Bloomfield, NJ  
Learn How to Stop  
Smoking in 7-10 min.  
Call 1-900-369-4800  
Extension 32. \$2.00/min.

**TRAVEL FREE**

Discover a new world of  
excitement, and GET  
PAID TO TRAVEL TO  
ROME, PARIS,  
LONDON... Absolutely  
FREE... Call 24 hours  
1-407-381-0032

You can get a prestigious  
College Degree without  
stepping a foot on  
campus. Call 1-900-369-  
4800 Ext. 33 \$2.00/min.

**PERSONAL  
NOTICES**

**DO IT  
YOURSELF  
DIVORCE KIT**  
Monday-Friday  
9 AM to 5 PM  
(201) 782-5540  
TALK ONE-ON-ONE  
LIVE. Make new friends  
all over America.  
1-900-654-LIVE  
\$1/min. 25 min.  
1-900-USA-LIVE  
\$1/min. 15 min.  
Call from home office

**CHILD CARE**

**CHILD CARE  
AVAILABLE MONDAY  
MORNING, INC.** has  
qualified reliable care  
available for children of  
all ages 9:12-0882

**MOTHER OF ONE** will  
care for your child(ren) in  
my Belleville home.  
References available,  
reasonable rates. Call  
anytime 450-4309.**BABY SITTER**

Babysitting in my home.  
Playroom & large room.  
Breakfast & lunch.  
Call 896-1695

**CHILD CARE NEEDED** in  
my Nutley home for 2  
year old & 8 month old, 3  
days per week. 661-4039**I will provide a safe,**  
loving home environment  
for your toddler while you  
work. Limited to 4  
children supervised play  
& sleep areas. Hot  
nutritious lunches &  
snacks provided.  
Call 450-4102

Mother of one willing to  
care for your child in my  
home. Call 751-1341  
anytime

**NURSERY  
SCHOOLS**

St. Mary's Has It All!  
\*3 yr. program  
\*4 yr. old program  
\*Full Day Kindergarten  
\*After School Center for  
Working Parents  
For further information  
CALL 667-0801

**NURSERY  
SCHOOLS**

**NANNY DS  
INFANT CARE CENTER**  
Full Day Sessions  
6 weeks to 2 Yr. Old  
204 Washington Avenue  
Belleville 759-1524  
Director: Dolores Ault

**THE MAGIC COTTAGE  
NURSERY SCHOOL**  
A Place Where Learning  
is fun  
State Certified School &  
Teachers. Year round half  
or all-day sessions.  
\*Arts & Crafts  
\*Science \*Music  
\*All Day Kindergarten  
Registration accepted now  
759-8758  
393 Washington Ave.  
Belleville (Cor. Essex St.)

**WISE OWL  
PRE-SCHOOL**  
617 Wash. Ave. Belle-  
ville Quality Program,  
Staff & Facility  
Limited Enrollment  
Registration Now Call 90  
759-1211  
State Lic. since 1969

**EMPLOYMENT  
CLERICAL**

**CLERICAL  
(10AM-4PM)**  
Part-time position avail-  
able in local travel  
business. Duties include  
telephone work,  
scheduling, filing, record  
keeping and other general  
office work.  
CALL  
998-4800

Will Clean your house or  
apt. 1 day a week. Satur-  
day Only. 9-1. \$35.00.  
667-8565

**GENERAL  
OPPORTS.**

**SKIN SO SOFT**  
Buy or Sell. Earn good  
money during the summer  
selling Avon. Call Claire  
at 429-0301

**ALL PHASE  
EMPLOYMENT  
SERVICE**  
382 Franklin Ave.  
Nutley, N.J.  
661-WO-R-K  
997-WO-R-K  
Permanent & Temporary  
FT & PT positions  
Vacation Plan

**ATTENTION:  
POSTAL JOBS!**  
Start \$11.41/hour!  
For application info call:  
(1) 602-388-8885  
Ext. M-11036  
6am-10pm, 7 days

**AUSTRALIAN JOBS**  
30,000 immediate open-  
ings to be filled by over  
400 U.S. Firms in  
Australia. All occupations.  
Tax Free Income, Free  
Travel, Benefits. For ap-  
plication call:  
1-800-333-4100  
EXT A-50

Data Entry/Key Punch  
Operator needed for days.  
FT or short-term. 2 yrs.  
+ exper. 991-2449

**GENERAL  
OPPORTS.**

**Dental Assistant/Recep-  
tionist** We're looking for a  
highly motivated, pleasant,  
humanistic individual, ex-  
perience with all aspects  
of the dental office. Work  
in a modern relaxed  
atmosphere, with a happy  
patient orient team. A to-  
tal benefit package avail-  
able. Please call 743-  
1338 to schedule an  
interview.

**Drivers**  
Come For The Money  
Stay for The Stability.  
J.B. Hual, one of  
America's largest and  
most successful transpor-  
tation companies, pays its  
drivers some of the best  
salaries in the business.  
Call 1-800-643-3331  
today. DOE. Subject to  
drug screen.

**EASY WORK!**  
EXCELLENT PAY!  
Assemble products at  
home. Call for  
information.  
1-504-641-8003 EXT. 837  
Full or PT travel agent  
needed. Contact Joe Nor-  
ton 743-3430

**MODELS ACTORS,  
BEGINNER MODELS**  
\$75.00 to \$125.00 HOUR.  
Television Commercials  
\$366.60 DAY. For  
recorded message:  
1-201-477-1104  
No Talent  
Break NJ  
NO COST OR  
OBLIGATION EVER

**OFFICE HELP**  
Needed for chiropractic  
office Mon, Wed, Fri,  
9:30 AM to 5:00 PM. Ex-  
per. needed. Permanent  
applicants apply. 759-3600  
Operator

**RELIEF  
TELEPHONE  
OPERATOR**  
Position currently exists  
for a relief operator at  
Clara Mass Medical  
Center.

Qualified candidate  
should possess telecom-  
munication experience.  
Dimension 2000 System  
experience preferred.

If you are available to  
work varied shifts, and are  
looking for a challenging  
and rewarding experience,  
please apply in person to  
the Human Resources  
Dept., Mon-Thurs, 9AM-  
12 noon.

**CLARA  
MASS MEDICAL  
CENTER**  
One Franklin Avenue  
Belleville, NJ 07109  
Equal Opportunity  
Employer

Veterinarian Clinic (2)  
positions avail for recep-  
tionist & assistant to  
doctor. Exp. pref. but will-  
ing to train.  
Call 429-0470

**AUTO  
INSURANCE**

743-5582 Thomas Delaney  
**Delson Associates**  
**AUTO INSURANCE CENTER**  
— CHECK OUR RATES —  
Immediate Coverage Minimum Down Payment  
Mon. - Friday, 10 a.m. - 5 p.m. & 7 p.m. - 8:30 p.m.  
Saturday 10 a.m. - 3 p.m.  
138 B. OOMFIELD AVE. BLOOMFIELD

**BIB'S**  
WILL PAY CASH FOR ANY JUNK  
CAR IN ANY CONDITION  
Highest prices paid for late models.  
USED CARS & TRUCKS  
USED PARTS 991-4246 or 991-0081  
54 Stover Ave., Kearny

**FREE TOWING & ROAD TESTS**  
**Kwik\*** AUTOMATIC  
TRANSMISSIONS  
INC.  
STANDARD & AUTOMATIC  
4-WHEEL DRIVE TRUCKS & CARS  
FREE ESTIMATES **998-9666**  
(Across from North Arlington Diner)  
20 River Road, North Arlington

**GENERAL  
OPPORTS.**

**PATIENT ACCOUNT  
REPRESENTATIVES**  
Buy Medical Practice  
seeking biller. Must have  
knowledge of insurance &  
good communication  
skills. CRT exp a must. FT.  
Please send qualifications  
to 1. Haas at Gastro  
Associates, 21 Plymouth  
St. Montclair, NJ 07042

**POSTAL JOBS**  
\$11.41 to \$10.90/hr. For  
exam & application infor-  
mation call 1-219-  
749-6649 Ext. N1179.  
8AM-8PM, 7 days.

**READ BOOKS FOR  
\$100 or More Per Book**  
Great Source for Extra  
Income.  
Call 617-695-1126  
Amazing Record  
Message Reveals Details!

**RENTAL AGENT**  
Part time position for  
garden apartment com-  
plex in Belleville.  
Saturdays 9-4 PM & Sun-  
days 11-4 PM. Apply at:  
Branch Brook Gardens,  
216 Branch Brook Drive,  
Belleville, N.J. 751-1943

**SALES FULL TIME**  
Local company seeks 2  
motivated people to be-  
come sales pros. Un-  
limited opportunity and  
growth potential. For a  
fast start call bet. 2 & 5  
680-4533

Switchboard Operator -  
Exp. needed for busy sur-  
rounding services.  
Bk & weekends 7/7 &  
FT/228-5867 leave mess on  
machine anytime

**TRAVEL AGENT**  
Pleasant working condi-  
tions in congenial tour and  
travel business. Ap-  
plicant must be ex-  
perienced with a knowl-  
edge of "SABRE"  
preferred. Excellent  
benefits. Call  
998-4800

**WORK AT HOME  
ASSEMBLING  
POD PRODUCTS**  
EARN \$300-\$500  
WEEKLY. NO  
SELLING. YOU'RE  
PAID DIRECT. EASY  
WORK. NO  
EXPERIENCE.  
GUARANTEED  
INCOME. MANY  
OPPORTUNITIES.  
CALL 1 (714) 991-2930  
ANYTIME

**PART-TIME  
HELP**  
CASHIER responsible  
person needed, Sat, 10-6,  
some exp. nec. Jos Ric-  
ciardi, Pains  
Washington Av. Nutley.

**PT OFFICE HELP**  
Needed for chiropractic  
office Mon, Wed, Fri,  
9:30 AM to 5:00 PM. Ex-  
per. needed. Permanent  
applicants apply. 759-3600

**PART TIME**  
Excellent salary + bonus.  
Clifton office. 6-9 PM.  
Mon thru Thurs. Students  
accepted.  
Customer service dept.  
546-5439

**FINANCIAL**

**\$ NEED CREDIT CARD  
REGARDLESS OF  
CREDIT HISTORY.**  
MAJOR BANK CARDS  
ALSO AVAILABLE.  
PLUS A FABULOUS  
CAMERA, FILM, AND  
VACATION PACKAGE.  
PHONE 1 (405) 364-5574.  
EXTENSION 46

**AVOID BANKRUPTCY!**  
Increase your credit  
worthiness and lower your  
monthly payments. Save  
\$555 on interest cost. Get  
Visa, Mastercard.  
24-hour  
Call 1-900-420-3500  
\$2/min

**BAD CREDIT? NO  
PROBLEM! ANY ONE  
CAN QUALIFY FOR A  
VISA AND  
MASTERCARD. CALL  
TODAY AND GET THE  
CREDIT YOU  
DESERVE.**  
CALL 1-900-420-8407  
24 HOURS A DAY  
COST OF CALL \$10.00

**CASH LOANS to  
\$5,000.00 for any  
Purpose. Prior  
Turnarounds OK! Bad  
Credit Our Specialty.**  
Guaranteed Reusable  
Creditors on Duty.  
CALL NOW  
1-513-436-1232  
Enterprise 280

**FINANCIAL**

**VISA/MASTERCARD**  
Easy, fast! No deposit. No  
credit check. Also IHS  
Gold Card Guaranteed!  
\$5000 credit limit. Cash  
advances! Free info.  
1 (800) 234-6741,  
anytime. (Free Call)

**BUSINESS  
OPPORTS.**

**\$ AMERICAN DREAM \$**  
Local Fruit Juice on em-  
pan up to \$52,000 per  
year. Service Holiday Inns,  
Best Western, Comfort  
Inns or other company  
owned accounts. Part or  
Full time. No Selling  
involved. Requires  
\$19,500 cash investment.  
Call 1-800-783-4550  
Anytime

**\$300/R PART TIME**  
is what you could earn in  
your own vending  
business. Your part time  
investment of \$6,000 to  
\$18,000. No selling  
required.  
Call 1-800-753-8363  
Ext. 609

**BUSINESS  
OPPORTUNITY OF A  
LIFETIME**  
Now you can start your  
own business in your spare  
time & obtain financial  
freedom. No investment  
req. For exciting details  
Call 235-1281

**FRIENDLY HOME  
PARTIES** has openings  
for dealers. NO cash  
investment. NO service  
charge. Highest commis-  
sion and hostess award.  
Three catalogs. Over 800  
items.  
Call 1-800-227-1510

**LET THE GOVERN-  
MENT FINANCE  
YOUR SMALL BUSI-  
NESSES (INCLUDING  
RANCHES). GET CASH  
GRANTS AND LOANS  
TO \$5,000,000 OR  
MORE.**  
CALL 1-900-420-3500  
\$2/min

Nail Salon New, modern,  
fully stocked, Reasonable.  
Call Helen 997-0008.

**Snack Bus. P/T from  
home.** Route of America's  
leading snack machine  
professionally established  
for you. M&M's, Planters  
Nuts, etc. High profit.  
\$5,000 complete.  
1-800-333-2506

**Truck Owner Operators**  
American President  
Trucking offers top pay,  
OTR—and gets you home!  
Must be 25, with 3 yrs.  
experience.  
1-800-444-8449  
Dept. G-3

**MUSIC/DANCE**

**DRUM INSTRUCTION  
IN YOUR HOME AT  
YOUR CONVENIENCE.**  
15 yrs experience.  
Educ at Cath Univ Music  
Coll. Begin & intern.  
Chris 667-3363

**ARTICLES  
FOR SALE**  
SWIMMING POOLS  
HURRY - We're  
overstocked! Many sizes  
and shapes available now  
at tremendous savings.  
Trade your old car, boat,  
camper, etc. Financing  
available.  
Call 1-800-843-7665  
(B189)

**ARTICLES  
FOR SALE**

5,000 BTU air  
conditioner, Emerson  
Quiet Cool. One year old.  
Asking \$195. Please call  
450-9643. Air conditioner  
uses 110V electricity.

**PAPER.** Excellent quality  
for printing, craft, etc.  
Size 32x40. 5,000 sheets.  
Best offer. Call 485-0019  
or 998-0029

**SEWING MACHINE**  
Zig-zag, with cabinet.  
Excellent condition.  
Call 284-1009

**SNAPBEANS, PEAS,  
SHEEP, SWINE**  
and all sorts of products  
direct from NJ farmers.  
Call the NJ Farmers  
Market Line

**\$600-FARM MKT**  
Sponsors include Rutgers  
Cooperative Extension

**WANTED  
WANTED  
CONDITIONERS**  
**CASH  
482-3681**

**WOLFE TANNING BEDS**  
Commercial-Home Units  
From \$199.00. Lamp-  
Lotions-Accesories.  
Monthly Payments Low  
As \$18.00. Call Today  
FREE Color Catalog  
1-800-238-4282

**ARTICLES  
WANTED**

**AAA ANTIQUES**  
Pura Jewelry, glassware,  
Sterling Wares of value,  
entire contents purchased  
or auctioned.  
579-0122 270-9453  
Gun Collector

Wants to buy for cash:  
Swords \*Daggers  
Bayonets \*Especially  
Military Items  
Call 783-6145

**MY TINKING TOOLS**  
\*Old \*New \*Used  
\*Any Type \*Any Quantity  
Call "GENE"  
696-4908 4-6 PM  
weekdays  
After 6:30 PM weekends.

**LIONEL  
AND OTHER  
TRAINS  
COLLECTOR**  
PAYS TOP PRICE  
Call 334-8799 or  
635-2058

**NEED CASH WE BUY:**  
Old gold, silver, silver  
coins & diamonds  
Gold Mine Trading  
726 Washington Ave.  
Belleville (inside  
Pathmark)  
450-0503

**NEED CASH WE BUY:**  
Old gold, silver, silver  
coins & diamonds  
Gold Mine Trading  
726 Washington Ave.  
Belleville (inside  
Pathmark)  
450-0503

**USED  
TVS & VCR'S  
BOUGHT &  
SOLD**  
CALL  
673-3845  
**FURNITURE**  
\*Used Filing Cabinets  
\*Chairs \*Desks  
EDELSTEIN OFFICE  
FURNITURE WHISE  
946 Market St. Paterson  
Cor. Lakeview Ave. & R30  
523-6153

**FURNITURE**

9 pc girls w/ French Pro.  
B/R, w/ twin size box  
spring, mattress & canopy.  
\$400. - Lane King-size  
Master B/R, 6 pcs Pean  
wood, contemporary style.  
\$1,400. Call 667-6539

**GARAGE SALES**  
BLOOMFIELD, 36 Core  
Rd. (off Broughton Ave.)  
Aug 34, 10-4. Multi-fam.  
H/H old & new etc.

**Garden & Furniture**  
Salsano, organ, vdrn, DR,  
sofa, kitchen, bicycles &  
patio. Sat, 8/4, 4 Wood-  
land Ave, Glen Ridge

Gargale Sale Bonanza  
Do It Yourselfers  
TOOLS! Plumbing,  
Electrical, - Painting  
supplies. Sat & Sun, Aug  
4 & 5, 10AM-4PM. No  
Early Birds! 38 Belmont  
St., Belleville, (Rain  
Date: 8/5 & 19)

**GIGANTIC YARD SALE**  
BELLEVILLE, 91 Union  
Ave. Aug 3/4 9-4.

**NUTLEY, 249 River Rd.**  
Aug 4, 9-5. No early birds.  
Rain or Shine.

**Yard & Apt Sale**  
Everything must go!  
45 Hechel St, Belleville  
8/4 & 5, 10-3PM

**Yard Sale- 8/4 & 5, 10-4.**  
Appliances, dishes, toys,  
books, misc. 224 Grant  
Ave, Nutley

**JEWELRY**

**RINGS! RINGS! Mar-  
casie & Sterling Silver  
Rings & 8 carat zircon,  
size 7 & 7 1/2. Very  
reasonable! Make lovely  
gifts in velvet boxes. 667-  
7667 or 667-0728.**

**NUTLEY \$139,000**  
Owner desperate, must  
sell. 1/2 B/R + spiral stair to  
kitchen. 2 bath, call cell, 2  
balconies, W/W, W/D, 1/2  
block to bus, 15 min to  
NYC. 661-4716

**CONDOS  
FOR SALE**

**BELLEVILLE CONDO**  
FOR SALE. 1 bedroom  
(off Franklin Ave.)  
room, dining room, CA  
wall to wall carpeting,  
laundry rm. Price reduced  
\$110,000.  
Call 751-2303

**BELLEVILLE  
BEST BUY**  
Bridgebrook Condos  
725 Joralemon Street  
(off Franklin Ave.)  
Brick, 1 & 2 BR's,  
situated on 8 acres of  
beautiful landscaped  
grounds. Garden & pool  
incl in price. Low maint  
incl H/H/W, gas. Listed  
from \$89,000-\$119,000.  
VA APPROVED  
Call for details.

**24-0990**  
**PATRICIAN**  
Associates Realtors  
Eves-Marge 759-8107

**BLOOMFIELD-CONDO**  
2 bedrooms, living room,  
dining room, eat-in-  
kitchen, 1 bath, private  
balcony. Move-in  
condition. Owners  
amorous. Must sell!  
Reduced price \$121,000.  
CENTURY 21  
STANFORD AGENCY  
235-9000  
Eves 680-8951 Marie  
Each office is  
independently owned and  
operated

**GENERAL  
OPPORTS.**

**Advertising Sales  
Classified**  
Weekly Newspaper Group seeking  
self-motivated and energetic  
individual.  
Requires pleasant telephone  
manner, accurate spelling, typing,  
and a willingness to become part  
of an aggressive sales team.  
Call 667-2100 for interview  
Ask for Arnie Ziem

**Television  
Sales**  
Sell  
Television Advertisement  
to Local Businesses.  
High Commission  
CALL  
**661-2345**  
OBC-TV

**Field Reporter/Writer**  
For Local Cable News  
Must have good writing skills  
and on-camera experience.  
Send resume with salary  
requirements to:  
**POWER 36**  
c/o Oreocho Publications & TV  
800 Bloomfield Ave.  
Nutley, N.J. 07110

**PART-TIME  
HELP** | **PART-TIME  
HELP**  
**PART TIME DRIVERS AND  
SCHOOL VEHICLE ATTENDANTS**  
**MALE/FEMALE**  
Consider these benefits:  
\* Work 3-5 hours per day  
\* Excellent opportunity with top salary.  
\* Supplement your income driving or supervising  
school children in our cars, station wagons, and vans.  
**TOP SALARY - IDEAL PART TIME JOB FOR**  
Homemakers, retirees, college students, shift workers, etc.  
We also have vacancies for drivers with a No. 1 License.  
All applicants must be persons of good character with good  
driving records.  
CALL: 998-4800

**CLASSIFIED**

CHECK YOUR AD THE  
FIRST DAY OF  
PUBLICATION.

The Nutley Sun, Belleville  
Times & Bloomfield Life  
are responsible for  
MAJOR errors in the first  
day's insertion.

**CREDITS:**  
Credits and adjustments  
are to be made only for  
errors which significantly  
affect the effectiveness of  
the ad, such as a wrong  
telephone or price. Credits  
will not be issued for ty-  
pographical errors or mis-  
spelled words. The news-  
papers can assume respon-  
sibility only for MAJOR  
errors in the first day's  
publication.

Classified line ads appear  
in all Belleville newspapers.

**THE NUTLEY SUN**  
and will appear once, free  
of charge, on OBC-TV  
Channel 36 during "The  
Community Bulletin"  
hourly time frames.

**WHEELS**  
  
**ANNOUNCEMENTS**  
  
**CHILD CARE**  


**INDEX**

**EMPLOYMENT**  
  
**FINANCIAL**  
  
**INSTRUCTION**  
  
**MERCHANDISE**  
  
**PETS & LIVESTOCK**  
  
**REAL ESTATE**  
  
**RENTALS**  
  
**DIAL-A-SERVICE**  


**USED PARTS**  
991-4246 or 991-0081  
54 Stover Ave., Kearny

**FREE TOWING & ROAD TESTS**  
**Kwik\*** AUTOMATIC  
TRANSMISSIONS  
INC.  
STANDARD & AUTOMATIC  
4-WHEEL DRIVE TRUCKS & CARS  
FREE ESTIMATES **998-9666**  
(Across from North Arlington Diner)  
20 River Road, North Arlington

**HOUSEKEEPER**

Five Days a Week, 11 AM - 7 PM.  
For senior couple with pet.  
Experience required.  
Driver's license necessary.  
Call:  
**(201) 667-0300**

**Live-In Housekeeper**  
For senior couple with pet.  
Driver's license necessary.  
Experience required.  
Call:  
**(201) 667-0077**

**HOUSEKEEPER**  
Five Days a Week, 11 AM - 7 PM.  
For senior couple with pet.  
Experience required.  
Driver's license necessary.  
Call:  
**(201) 667-0300**

**Live-In Housekeeper**  
For senior couple with pet.  
Driver's license necessary.  
Experience required.  
Call:  
**(201) 667-0077**



# DAL-A-SERVICE

### HOUSES FOR SALE

**DEACH HAVEN WEST**  
Lagoonfront home is spacious & bright/multiple stories in expanded living room, bath & over-size master bedroom with a her closets. Excellent maintained w/gas heat & dock for boat. Call Realtor.

**YAN DYK GROUP**  
1-800-735-1901

**BELLEVILLE**  
Custom built 2 family on hill/Nutley line.  
LR, DR, kit, 3 BRS, tile bath on 1st, LR, kit, dining area, 2 BRS, tile bath on 2nd. Full basement incl. frp/c, kit w/ laundry area. Oak hardwood floors throughout. Indiv gas heaters for each floor. New roof in '88. Dead end street near churches, schools, private & public schools. Asking \$249,000, negotiable.

**CENTURY 21**  
**STANFORD AGENCY**  
86 Union Avenue  
Nutley 235-9900  
Eves 680-8951, Marie

**BELLEVILLE**  
3 BR COLONIAL LR w/ frp, DR, EIK, fr. bsmt, 2 car garage. A must see! Asking \$159,000.

**CENTURY 21**  
**STANFORD AGENCY**  
86 Union Avenue  
Nutley 235-9900  
Eves 680-8951, Marie

**BELLEVILLE**  
GREAT BUY! This lovely 2 BR, LR, DR, EIK, Cape sits on 2 lots. One 49x106, second 44x50 where a gazebo is found. Please call for additional details.

**PATRICIAN**  
Associates Realtors  
Belleville - 4 BRS, 2 1/2 bhs, Florida rm, bsmt, lg lot. Asking \$154,900. Call 759-0896

**BELLEVILLE**  
HILLTOP  
See this 5 star ch. cpe. w/ 27' 1" fr, lg dr & kit, porch, den & 1 1/2 bhs, 4 w.c. & 2 no. im- mune bhs, 2nd, fr. bsmt, 1 1/2 bhs, 2 cr gar, new "h", "tu-turn-a-bee" driveway & so very much more. Call 759-0896

**WANTED!**  
YOU & SOME LOVE  
See this 1F col. (used as 20 yrs. mod, 2 bhs, mud rm, nice yard, driveway, roof & tile only line. Call 759-0896. Great area, close to school & trans. West End.

**MOVING RIGHT ALONG...**  
We have a multi purpose 3500 sq ft bldg at 129 Washington Ave w/3 of 2 cr gar, storage, 1 1/2 bhs, new roof, reduced to 240k, for sale. "OIL" & 1 unit mix use bldg w/2 stores, 2 apts, and parking for only 250k. All properties in West End. Call Jim Daxaro - REILLY REALTORS - 759-6812

**BELLEVILLE**  
2 Family 4 & 3, mod kit & bath, Deep lot, garage. Asking \$165,000.

4 Family, 4 & 3, 3 & 3. Good main floor income. Well maintained. Asking \$197,000.

Pilgrim Realty 759-3349

**BLOOMFIELD**  
2 FAMILY, LR, DR, Eat-in-kitchen, plus 2 BDRMS on each floor. Sep. util. Full basement plus 2-car garage. Convenient to shopping & public (949-2262) \$179,900

Util. Montclair Office 746-1515

**Weichert Realtors**  
The American Dream Team

**BLOOMFIELD**  
68 BENDIS STREET 21 yr sp/w/ w/ frp, drf, mod kit, den, 1 1/2 bhs, 3 brs, 174-500 Super income cond! Best priced sp/w/ in Bldg. Agt: Jim Daxaro/ REILLY REALTORS/ 759-6812

**CALL US**  
on our fine selection of homes in Nutley, Bloomfield & Clifton. Good income building lot from \$15,000 & up. The market's moving again-take your pick NOW! CALL: RECORDS/REALTY 3 High St, Nutley 667-3800

### HOUSES FOR SALE

**MONTCLAIR**  
WHAT A PRICE! For charm check out this 2 story colonial. Freshly decorated, quiet tree-lined street, modern kitchen, 3 bdrms. Plus great local, close to all amenities. An excellent value. (049-2110) \$175,000

Util. Montclair Office 746-1515

**Weichert Realtors**  
The American Dream Team

**NUTLEY**  
\*\*\*\$124,900\*\*\*  
GREAT STARTER HOME, BETTER THAN A CONDO WITH 3 BRS, 2 BRS, ALL NEW INTERIOR, 2 CAR GARAGE. JUST REDUCED FOR FAST SALE & POSSESSION! CENTRE REALTY REALTOR 667-5100

**NUTLEY**  
WHAT A VALUE! Lovely ranch on tree lined street. Three full bdrms & two full bhs, spacious living room w/air conditioning tool enjoy relaxing on the rear deck and viewing the secluded yard. (049-2269) \$229,000.

**EXCELLENT VALUE**  
Located in the Spring Garden section, this colonial features LR, formal DR, modern Eat-in kitchen, & New York Trans. Great starter. (049-2269) \$159,900.

Util. Montclair Office 746-1515

**Weichert Realtors**  
The American Dream Team

**BELLEVILLE - 4 BRS,**  
2 bhs, Florida rm, bsmt, lg lot. Asking \$154,900. Call 759-0896

**BELLEVILLE**  
HILLTOP  
See this 5 star ch. cpe. w/ 27' 1" fr, lg dr & kit, porch, den & 1 1/2 bhs, 4 w.c. & 2 no. im- mune bhs, 2nd, fr. bsmt, 1 1/2 bhs, 2 cr gar, new "h", "tu-turn-a-bee" driveway & so very much more. Call 759-0896

**WANTED!**  
YOU & SOME LOVE  
See this 1F col. (used as 20 yrs. mod, 2 bhs, mud rm, nice yard, driveway, roof & tile only line. Call 759-0896. Great area, close to school & trans. West End.

**MOVING RIGHT ALONG...**  
We have a multi purpose 3500 sq ft bldg at 129 Washington Ave w/3 of 2 cr gar, storage, 1 1/2 bhs, new roof, reduced to 240k, for sale. "OIL" & 1 unit mix use bldg w/2 stores, 2 apts, and parking for only 250k. All properties in West End. Call Jim Daxaro - REILLY REALTORS - 759-6812

**BELLEVILLE**  
2 Family 4 & 3, mod kit & bath, Deep lot, garage. Asking \$165,000.

4 Family, 4 & 3, 3 & 3. Good main floor income. Well maintained. Asking \$197,000.

Pilgrim Realty 759-3349

**BLOOMFIELD**  
2 FAMILY, LR, DR, Eat-in-kitchen, plus 2 BDRMS on each floor. Sep. util. Full basement plus 2-car garage. Convenient to shopping & public (949-2262) \$179,900

Util. Montclair Office 746-1515

**Weichert Realtors**  
The American Dream Team

**BLOOMFIELD**  
68 BENDIS STREET 21 yr sp/w/ w/ frp, drf, mod kit, den, 1 1/2 bhs, 3 brs, 174-500 Super income cond! Best priced sp/w/ in Bldg. Agt: Jim Daxaro/ REILLY REALTORS/ 759-6812

**CALL US**  
on our fine selection of homes in Nutley, Bloomfield & Clifton. Good income building lot from \$15,000 & up. The market's moving again-take your pick NOW! CALL: RECORDS/REALTY 3 High St, Nutley 667-3800

### APARTMENTS UNFURNISHED

**BELLEVILLE - 2 1/2**  
rm apt. Secured bldg. Walk to shops, laundry & 5 premises. H&W incl. \$470. Avail. Aug 1. Call 759-8537 bef. 7PM

**BELLEVILLE-3 1/2 & 4 1/2**  
lg ultra mod rms w/ w/c carpeting, H & HW incl. Laundry facilities on premises. Pkg space. Call 759-8379

Belleville Garden Apts several spacious 3 1/2 rms. Avail. Aug. Sept. & Oct. \$625. & up. Call Cathy No Fee. 484-9563

**Belleville - Avail. now.**  
4 & 2 BR apt. H&W/HW incl. Call Super 759-8562

**NUTLEY**  
GREAT STARTER HOME, BETTER THAN A CONDO WITH 3 BRS, 2 BRS, ALL NEW INTERIOR, 2 CAR GARAGE. JUST REDUCED FOR FAST SALE & POSSESSION! CENTRE REALTY REALTOR 667-5100

**NUTLEY**  
WHAT A VALUE! Lovely ranch on tree lined street. Three full bdrms & two full bhs, spacious living room w/air conditioning tool enjoy relaxing on the rear deck and viewing the secluded yard. (049-2269) \$229,000.

**EXCELLENT VALUE**  
Located in the Spring Garden section, this colonial features LR, formal DR, modern Eat-in kitchen, & New York Trans. Great starter. (049-2269) \$159,900.

Util. Montclair Office 746-1515

**Weichert Realtors**  
The American Dream Team

**BELLEVILLE - 4 BRS,**  
2 bhs, Florida rm, bsmt, lg lot. Asking \$154,900. Call 759-0896

**BELLEVILLE**  
HILLTOP  
See this 5 star ch. cpe. w/ 27' 1" fr, lg dr & kit, porch, den & 1 1/2 bhs, 4 w.c. & 2 no. im- mune bhs, 2nd, fr. bsmt, 1 1/2 bhs, 2 cr gar, new "h", "tu-turn-a-bee" driveway & so very much more. Call 759-0896

**WANTED!**  
YOU & SOME LOVE  
See this 1F col. (used as 20 yrs. mod, 2 bhs, mud rm, nice yard, driveway, roof & tile only line. Call 759-0896. Great area, close to school & trans. West End.

**MOVING RIGHT ALONG...**  
We have a multi purpose 3500 sq ft bldg at 129 Washington Ave w/3 of 2 cr gar, storage, 1 1/2 bhs, new roof, reduced to 240k, for sale. "OIL" & 1 unit mix use bldg w/2 stores, 2 apts, and parking for only 250k. All properties in West End. Call Jim Daxaro - REILLY REALTORS - 759-6812

**BELLEVILLE**  
2 Family 4 & 3, mod kit & bath, Deep lot, garage. Asking \$165,000.

4 Family, 4 & 3, 3 & 3. Good main floor income. Well maintained. Asking \$197,000.

Pilgrim Realty 759-3349

**BLOOMFIELD**  
2 FAMILY, LR, DR, Eat-in-kitchen, plus 2 BDRMS on each floor. Sep. util. Full basement plus 2-car garage. Convenient to shopping & public (949-2262) \$179,900

Util. Montclair Office 746-1515

**Weichert Realtors**  
The American Dream Team

**BLOOMFIELD**  
68 BENDIS STREET 21 yr sp/w/ w/ frp, drf, mod kit, den, 1 1/2 bhs, 3 brs, 174-500 Super income cond! Best priced sp/w/ in Bldg. Agt: Jim Daxaro/ REILLY REALTORS/ 759-6812

**CALL US**  
on our fine selection of homes in Nutley, Bloomfield & Clifton. Good income building lot from \$15,000 & up. The market's moving again-take your pick NOW! CALL: RECORDS/REALTY 3 High St, Nutley 667-3800

### APARTMENTS UNFURNISHED

**BELLEVILLE-1 rm**  
studio apt. Secured bldg. Walk to shops, laundry & 5 premises. H&W incl. ref, stove, A/C carpets \$475. BLOOMFIELD Ultra mod 1 bdr garden apt. Appliances, util, carpet, parking excel area \$610. BELLEVILLE Queen 1 bdr garden, ref, stove, A/C, H&W, balcony, parking \$600. B.J. MORRISON MGMT CO. 998-9262

**BELLEVILLE - 2 1/2**  
rms, 2nd flr, H&W/HW inc. \$550.

3 1/2 rms, 1st flr, garden apt. H&W inc. \$550.

3 rms, 2nd flr, H&W inc. \$550.

3 1/2 rms, 1st flr, garden apt. H&W inc. \$550.

6 rms, 2nd flr, supply own util. (Washington Ave location) \$625.

**NUTLEY**  
5 mod. rms, 1st flr, supply own util. (Hillside Ave location) \$800.

**METRO AGENCY**  
Realtor 751-3400

**BELLEVILLE**  
1 1/2 rms, \$700 h&w/hw. 3 rms, \$525 h&w/hw incl. BLOOMFIELD 3 rms, \$600 h&w/hw incl. NUTLEY 5 rms, 1st flr, \$875 all util. MONTCLAIR AGENCY 759-6900

**BELLEVILLE**  
5 1/2 rms, 2nd flr, newly decorated, EIK, mod bhs, W/w carp. Supply own util. Adults pref. No pets. Avail. immed. \$850. neg. Avail. 8/1. Call 686-3556 between 9 & 5.

**BELLEVILLE**  
LR & DR, KIT, 2 BRS, bth, & courtesy parking. \$675/mo inc heat & h/w. Avail. Aug. 15 or sooner. REILLY REALTORS - 667-6812

**BELLEVILLE**  
2 DR, 2 BRS/2bhs, LR, DR, laund rm, mod kit, incl appl. w/w. Vacant. \$1,000 & up.

1 BR GRD. Apartment. Newly painted. N.Y. vac. at door. \$595 w/o. No FEE. GLENWOOD REAL ESTATE AGENCY 429-280

**NUTLEY**  
3rd flr. conv. to NY trans. 3 Lge rms, mod kit & bath. 3rd flr. \$600. incl H&W. Avail. immed. George E. Mac Mann Co Realtors 667-3440

**NUTLEY & VIC**  
2 1/2 rms, \$450 inc ht. 2 1/2 rms Grdn, \$500 inc ht. 3 rms, \$550 inc ht. 5 rms, 1st flr. \$800 & up.

**CENTRE REALTY**  
REALTOR 667-5100

**NUTLEY - 4 beautiful**  
rms, new rugs, new windows, just painted, move right in, avail. immed. No pets. No fee. park 1 car. \$725. all util incl. 1 yr lease. 1 1/2 mo. free. 667-4349 aft. 6. Ask for Mike.

**RESIDENTIAL RENTALS WTD.**

**ATTENTION LANDLORDS!**  
Apartments Wanted We Screen All Prospective Tenants. No Fee To Landlord. COSTANTINE REALTY 89 Franklin Avenue, Nutley, N.J. 667-7070

**APARTMENTS WANTED**  
ATTENTION LANDLORDS! We have many qualified tenants that are screened and waiting for apartments or homes. You can choose that special tenant at no cost to you. For information call Tony Grande. MARZULLI REALTORS 264 Belleville Ave, Bloomfield, N.J. 743-2306

### APARTMENTS UNFURNISHED

**NUTLEY - Duplex garden**  
apt. 2 bedrooms, no pets. Call 667-2029 after 7 pm

**Nutley 2nd fl. 5 rms.**  
\$650 & up. 1 mth. sec. Avail. Sept. 1. 680-1855

**OFFICE RENTALS**  
RENTALS  
Monclair, Church St, several offices, in professional building can be combined to formed suites. Rent/reas & neg. 744-5033

**NUTLEY**  
OFFICES FOR RENT  
\$850 incl util. 244-9000

**PATRICIAN**  
Associates Realtors  
Nutley Professional office space. 1300 sq. ft. 2nd flr. Move-in-cond. Prime Franklin Ave location. Please call 667-0771.

**Professional office space**  
for rent PRT-FF. Convenient loc. Ideal for counselor. Contact Dr. Saut 499-235-0325

**RESIDENTIAL RENTALS WTD.**  
WANT TO BUY A ONE FAMILY HOME NUTLEY AREA 4 to 6 Bedrooms on oversized lot. 150' deep. P.O. Box 597 Nutley, NJ 07110

**ROOMS**  
BELLEVILLE Furnished room in prvt. home. Female pref. 759-7024

**BELLEVILLE**  
Furnished room, Prvt. eat. & bath, single only. No cooking. \$90pw. w/c. Call 661-2264

**FURNISHED ROOM**  
in private home. Mature woman preferred. \$675/mo. 667-7575

**NUTLEY**  
New rm for retired or working gentlemen, \$75-\$85 w/c parking. 1 wk security.

**VACATION RENTALS**  
BRIGANTINE ISLAND Ocean view, ultra mod, interior decor, 5 min to A/C, 2 BRS, 2 full size bhs, jacuzzi, A/C, Full DR, LR, W.D., many amenities. 48-18 Sept 30 751-7258

**SEASIDE PARK**  
Families only. 2 BRS, 2 full size bhs, A/C, no fee. 1 block from bay or ocean.

759-0118 or 759-1717

**SOUTH CAROLINA MYRTLE BEACH RESORT**  
OCEANFRONT CONDOMINIUM, TENNIS, INDOOR POOL, PUTTING GREEN, SAUNAS, WHIRLPOOLS, HOUSEKEEPING AND GOLF PACKAGES. FREE BROCHURE. 1-800-448-5653 7 AM. 1st 11 P.M.

Time share units and campground memberships. Distress sales. Cheap! Worldwide selections. Call VACATION NETWORKS U.S. and Canada. 1-800-736-8250 or 1-800-448-5653 Free rental information 1-805-771-6331

**RESIDENTIAL RENTALS WTD.**

**ATTENTION LANDLORDS!**  
Apartments Wanted We Screen All Prospective Tenants. No Fee To Landlord. COSTANTINE REALTY 89 Franklin Avenue, Nutley, N.J. 667-7070

**APARTMENTS WANTED**  
ATTENTION LANDLORDS! We have many qualified tenants that are screened and waiting for apartments or homes. You can choose that special tenant at no cost to you. For information call Tony Grande. MARZULLI REALTORS 264 Belleville Ave, Bloomfield, N.J. 743-2306

### APARTMENTS UNFURNISHED

**NUTLEY - Duplex garden**  
apt. 2 bedrooms, no pets. Call 667-2029 after 7 pm

**Nutley 2nd fl. 5 rms.**  
\$650 & up. 1 mth. sec. Avail. Sept. 1. 680-1855

**OFFICE RENTALS**  
RENTALS  
Monclair, Church St, several offices, in professional building can be combined to formed suites. Rent/reas & neg. 744-5033

**NUTLEY**  
OFFICES FOR RENT  
\$850 incl util. 244-9000

**PATRICIAN**  
Associates Realtors  
Nutley Professional office space. 1300 sq. ft. 2nd flr. Move-in-cond. Prime Franklin Ave location. Please call 667-0771.

**Professional office space**  
for rent PRT-FF. Convenient loc. Ideal for counselor. Contact Dr. Saut 499-235-0325

**RESIDENTIAL RENTALS WTD.**  
WANT TO BUY A ONE FAMILY HOME NUTLEY AREA 4 to 6 Bedrooms on oversized lot. 150' deep. P.O. Box 597 Nutley, NJ 07110

**ROOMS**  
BELLEVILLE Furnished room in prvt. home. Female pref. 759-7024

**BELLEVILLE**  
Furnished room, Prvt. eat. & bath, single only. No cooking. \$90pw. w/c. Call 661-2264

**FURNISHED ROOM**  
in private home. Mature woman preferred. \$675/mo. 667-7575

**NUTLEY**  
New rm for retired or working gentlemen, \$75-\$85 w/c parking. 1 wk security.

**VACATION RENTALS**  
BRIGANTINE ISLAND Ocean view, ultra mod, interior decor, 5 min to A/C, 2 BRS, 2 full size bhs, jacuzzi, A/C, Full DR, LR, W.D., many amenities. 48-18 Sept 30 751-7258

**SEASIDE PARK**  
Families only. 2 BRS, 2 full size bhs, A/C, no fee. 1 block from bay or ocean.

759-0118 or 759-1717

**SOUTH CAROLINA MYRTLE BEACH RESORT**  
OCEANFRONT CONDOMINIUM, TENNIS, INDOOR POOL, PUTTING GREEN, SAUNAS, WHIRLPOOLS, HOUSEKEEPING AND GOLF PACKAGES. FREE BROCHURE. 1-800-448-5653 7 AM. 1st 11 P.M.

Time share units and campground memberships. Distress sales. Cheap! Worldwide selections. Call VACATION NETWORKS U.S. and Canada. 1-800-736-8250 or 1-800-448-5653 Free rental information 1-805-771-6331

**RESIDENTIAL RENTALS WTD.**

**ATTENTION LANDLORDS!**  
Apartments Wanted We Screen All Prospective Tenants. No Fee To Landlord. COSTANTINE REALTY 89 Franklin Avenue, Nutley, N.J. 667-7070

**APARTMENTS WANTED**  
ATTENTION LANDLORDS! We have many qualified tenants that are screened and waiting for apartments or homes. You can choose that special tenant at no cost to you. For information call Tony Grande. MARZULLI REALTORS 264 Belleville Ave, Bloomfield, N.J. 743-2306

### APARTMENTS UNFURNISHED

**NUTLEY - Duplex garden**  
apt. 2 bedrooms, no pets. Call 667-2029 after 7 pm

**Nutley 2nd fl. 5 rms.**  
\$650 & up. 1 mth. sec. Avail. Sept. 1. 680-1855

**OFFICE RENTALS**  
RENTALS  
Monclair, Church St, several offices, in professional building can be combined to formed suites. Rent/reas & neg. 744-5033

**NUTLEY**  
OFFICES FOR RENT  
\$850 incl util. 244-9000

**PATRICIAN**  
Associates Realtors  
Nutley Professional office space. 1300 sq. ft. 2nd flr. Move-in-cond. Prime Franklin Ave location. Please call 667-0771.

**Professional office space**  
for rent PRT-FF. Convenient loc. Ideal for counselor. Contact Dr. Saut 499-235-0325

**RESIDENTIAL RENTALS WTD.**  
WANT TO BUY A ONE FAMILY HOME NUTLEY AREA 4 to 6 Bedrooms on oversized lot. 150' deep. P.O. Box 597 Nutley, NJ 07110

**ROOMS**  
BELLEVILLE Furnished room in prvt. home. Female pref. 759-7024

**BELLEVILLE**  
Furnished room, Prvt. eat. & bath, single only. No cooking. \$90pw. w/c. Call 661-2264

**FURNISHED ROOM**  
in private home. Mature woman preferred. \$675/mo. 667-7575

**NUTLEY**  
New rm for retired or working gentlemen, \$75-\$85 w/c parking. 1 wk security.

**VACATION RENTALS**  
BRIGANTINE ISLAND Ocean view, ultra mod, interior decor, 5 min to A/C, 2 BRS, 2 full size bhs, jacuzzi, A/C, Full DR, LR, W.D., many amenities. 48-18 Sept 30 751-7258

**SEASIDE PARK**  
Families only. 2 BRS, 2 full size bhs, A/C, no fee. 1 block from bay or ocean.

759-0118 or 759-1717

**SOUTH CAROLINA MYRTLE BEACH RESORT**  
OCEANFRONT CONDOMINIUM, TENNIS, INDOOR POOL, PUTTING GREEN, SAUNAS, WHIRLPOOLS, HOUSEKEEPING AND GOLF PACKAGES. FREE BROCHURE. 1-800-448-5653 7 AM. 1st 11 P.M.

Time share units and campground memberships. Distress sales. Cheap! Worldwide selections. Call VACATION NETWORKS U.S. and Canada. 1-800-736-8250 or 1-800-448-5653 Free rental information 1-805-771-6331

**RESIDENTIAL RENTALS WTD.**

**ATTENTION LANDLORDS!**  
Apartments Wanted We Screen All Prospective Tenants. No Fee To Landlord. COSTANTINE REALTY 89 Franklin Avenue, Nutley, N.J. 667-7070

**APARTMENTS WANTED**  
ATTENTION LANDLORDS! We have many qualified tenants that are screened and waiting for apartments or homes. You can choose that special tenant at no cost to you. For information call Tony Grande. MARZULLI REALTORS 264 Belleville Ave, Bloomfield, N.J. 743-2306

### APARTMENTS UNFURNISHED

**NUTLEY - Duplex garden**  
apt. 2 bedrooms, no pets. Call 667-2029 after 7 pm

**Nutley 2nd fl. 5 rms.**  
\$650 & up. 1 mth. sec. Avail. Sept. 1. 680-1855

**OFFICE RENTALS**  
RENTALS  
Monclair, Church St, several offices, in professional building can be combined to formed suites. Rent/reas & neg. 744-5033

**NUTLEY**  
OFFICES FOR RENT  
\$850 incl util. 244-9000

**PATRICIAN**  
Associates Realtors  
Nutley Professional office space. 1300 sq. ft. 2nd flr. Move-in-cond. Prime Franklin Ave location. Please call 667-0771.

**Professional office space**  
for rent PRT-FF. Convenient loc. Ideal for counselor. Contact Dr. Saut 499-235-0325

**RESIDENTIAL RENTALS WTD.**  
WANT TO BUY A ONE FAMILY HOME NUTLEY AREA 4 to 6 Bedrooms on oversized lot. 150' deep. P.O. Box 597 Nutley, NJ 07110

**ROOMS**  
BELLEVILLE Furnished room in prvt. home. Female pref. 759-7024

**BELLEVILLE**  
Furnished room, Prvt. eat. & bath, single only. No cooking. \$90pw. w/c. Call 661-2264

**FURNISHED ROOM**  
in private home. Mature woman preferred. \$675/mo. 667-7575

**NUTLEY**  
New rm for retired or working gentlemen, \$75-\$85 w/c parking. 1 wk security.

**VACATION RENTALS**  
BRIGANTINE ISLAND Ocean view, ultra mod, interior decor, 5 min to A/C, 2 BRS, 2 full size bhs, jacuzzi, A/C, Full DR, LR, W.D., many amenities. 48-18 Sept 30 751-7258

**SEASIDE PARK**  
Families only. 2 BRS, 2 full size bhs, A/C, no fee. 1 block from bay or ocean.

759-0118 or 759-1717

**SOUTH CAROLINA MYRTLE BEACH RESORT**  
OCEANFRONT CONDOMINIUM, TENNIS, INDOOR POOL, PUTTING GREEN, SAUNAS, WHIRLPOOLS, HOUSEKEEPING AND GOLF PACKAGES. FREE BROCHURE. 1-800-448-5653 7 AM. 1st 11 P.M.

Time share units and campground memberships. Distress sales. Cheap! Worldwide selections. Call VACATION NETWORKS U.S. and Canada. 1-800-736-8250 or 1-800-448-5653 Free rental information 1-805-771-6331

**RESIDENTIAL RENTALS WTD.**

**ATTENTION LANDLORDS!**  
Apartments Wanted We Screen All Prospective Tenants. No Fee To Landlord. COSTANTINE REALTY 89 Franklin Avenue, Nutley, N.J. 667-7070

**APARTMENTS WANTED**  
ATTENTION LANDLORDS! We have many qualified tenants that are screened and waiting for apartments or homes. You can choose that special tenant at no cost to you. For information call Tony Grande. MARZULLI REALTORS 264 Belleville Ave, Bloomfield, N.J. 743-2306

### APARTMENTS UNFURNISHED

**NUTLEY - Duplex garden**  
apt. 2 bedrooms, no pets. Call 667-2029 after 7 pm

**Nutley 2nd fl. 5 rms.**  
\$650 & up. 1 mth. sec. Avail. Sept. 1. 680-1855

**OFFICE RENTALS**  
RENTALS  
Monclair, Church St, several offices, in professional building can be combined to formed suites. Rent/reas & neg. 744-5033

**NUTLEY**  
OFFICES FOR RENT  
\$850 incl util. 244-9000

**PATRICIAN**  
Associates Realtors  
Nutley Professional office space. 1300 sq. ft. 2nd flr. Move-in-cond. Prime Franklin Ave location. Please call 667-0771.

**Professional office space**  
for rent PRT-FF. Convenient loc. Ideal for counselor. Contact Dr. Saut 499-235-0325

**RESIDENTIAL RENTALS WTD.**  
WANT TO BUY A ONE FAMILY HOME NUTLEY AREA 4 to 6 Bedrooms on oversized lot. 150' deep. P.O. Box 597 Nutley, NJ 07110

**ROOMS**  
BELLEVILLE Furnished room in prvt. home. Female pref. 759-7024

**BELLEVILLE**  
Furnished room, Prvt. eat. & bath, single only. No cooking. \$90pw. w/c. Call 661-2264

**FURNISHED ROOM**  
in private home. Mature woman preferred. \$675/mo. 667-7575

**NUTLEY**  
New rm for retired or working gentlemen, \$75-\$85 w/c parking. 1 wk security.

**VACATION RENTALS**  
BRIGANTINE ISLAND Ocean view, ultra mod, interior decor, 5 min to A/C, 2 BRS, 2 full size bhs, jacuzzi, A/C, Full DR, LR, W.D., many amenities. 48-18 Sept 30 751-7258

**SEASIDE PARK**  
Families only. 2 BRS, 2 full size bhs, A/C, no fee. 1 block from bay or ocean.

759-0118 or 759-1717

**SOUTH CAROLINA MYRTLE BEACH RESORT**  
OCEANFRONT CONDOMINIUM, TENNIS, INDOOR POOL, PUTTING GREEN, SAUNAS, WHIRLPOOLS, HOUSEKEEPING AND GOLF PACKAGES. FREE BROCHURE. 1-800-448-5653 7 AM. 1st 11 P.M.

Time share units and campground memberships. Distress sales. Cheap! Worldwide selections. Call VACATION NETWORKS U.S. and Canada. 1-800-736-8250 or 1-800-448-5653 Free rental information 1-805-771-6331

**RESIDENTIAL RENTALS WTD.**

**ATTENTION LANDLORDS!**  
Apartments Wanted We Screen All Prospective Tenants. No Fee To Landlord. COSTANTINE REALTY 89 Franklin Avenue, Nutley, N.J. 667-7070

**APARTMENTS WANTED**  
ATTENTION LANDLORDS! We have many qualified tenants that are screened and waiting for apartments or homes. You can choose that special tenant at no cost to you. For information call Tony Grande. MARZULLI REALTORS 264 Belleville Ave, Bloomfield, N.J. 743-2306

36



Eat fish and  
seafood twice  
a week.



# Shrimp Sale!

## SAVE UP TO 10<sup>00</sup>

With These  
Coupons  
Below

Shrimp in a salad...tasty, Shrimp Cocktail...luscious Shrimp Scampi, or Shrimp on the barbeque. Anyway you serve it, your guests will be delighted. Nutritious, low in calories, and delicious...shrimp is always a great favorite. Add to that ShopRite's low, low prices and you've got the super shrimp sale of the season!

FROZEN & THAWED  
FARM RAISED  
31.40 PER LB.

**Large Shrimp**  
**5<sup>67</sup>**  
lb. FROZEN  
4.4-lb. box **24<sup>95</sup>**

**ShopRite Coupon**

WITH THIS COUPON  
One (1) 4.4 lb. box Frozen 31-40 per lb.

Farm Raised, White

**Large Shrimp**

**19<sup>95</sup>**

Less Than  
**4.54**  
per lb.

OR \*5.00 OFF

Toward the purchase of One (1) 4-lb., 4.4-lb., or 5-lb. box of  
25-30 per lb. or Larger Size Frozen Shrimp

SAVE 5.00

FROZEN & THAWED  
FARM RAISED  
41.50 PER LB.

**Medium Shrimp**  
**4<sup>99</sup>**  
lb. FROZEN  
4.4-lb. box **21<sup>95</sup>**

**ShopRite Coupon**

WITH THIS COUPON  
One (1) 4.4 lb. box Frozen 41-50 per lb.

Farm Raised, White

**Medium Shrimp**

**16<sup>95</sup>**

Less Than  
**3.86**  
per lb.

OR \*5.00 OFF

Toward the purchase of One (1) 4-lb., 4.4-lb., or 5-lb. box of  
61-70 per lb. Frozen Shrimp

SAVE 5.00

### The Produce Place

RED FLAME OR GREEN THOMPSON  
**California Seedless Grapes**  
lb. **.99**

VITAMIN 'A' & 'C'  
**Fiery Red Watermelon** lb. **1.19**

FRESH CALIFORNIA  
**Peaches or Plums** lb. **.79**

VITAMIN 'A'  
**California Nectarines** lb. **.89**

TREE RIPE NECTARINES OR  
**Tree Ripe Peaches** lb. **1.49**

VITAMIN 'C'  
**Jersey Blueberries** 1/2 pt. **1.69**

GOOD SOURCE OF FIBER  
**Raspberries or Blackberries** lb. **1.69**

LOW IN CALORIES, CALIF. LARGE 6 SIZE  
**Honeydew Melons** ea. **2.49**

LOW SODIUM  
**Granny Smith Apples** lb. **.89**

VITAMIN 'C' CALIF. 38 SIZE  
**Valencia Oranges** 5 for **.99**

**The Dairy Place**

REG. OR HOMESTYLE PURE PREMIUM  
**Tropicana Orange Juice** 64-oz. cont. **1.99**

WHY PAY MORE?  
**ShopRite Cream Cheese** 8-oz. pkg. **.79**

MARGARINE OR SPREAD  
**Blue Bonnet Quarters** 1-lb. pkg. **.59**

**The Deli Place**

WHY PAY MORE?  
**ShopRite Hot Dogs** 1-lb. pkg. **.99**

REG., THICK OR LOW SALT  
**Oscar Mayer Sliced Bacon** 1-lb. pkg. **2.49**

ASSORTED VARIETIES  
**Claussen Pickles** 1-qt. jar **1.99**

**The Frozen Food Place**

GRADE 'A' PINK OR WHITE  
**ShopRite Lemonade** 12-oz. cans **3.10**

CHEESE OR SAUSAGE  
**Jeno's Pizza** 7.4-oz. pkg. **.99**

ASST. VAR. ELIZABETH YORK  
**Ice Cream** 1/2-gal. cart. **1.49**

**Fresh Bake Shoppe**

FRESH BAKED CHERRY CRUMB OR  
**Blueberry Muffins** 6-pk. 15-oz. pkg. **1.79**

WITH APPLES & NUTS  
**Rice Bran Bread** 16-oz. loaf **1.69**

**Prepared Foods To Go**

8 WINGS, 8 DRUMSTICKS & 8 THIGHS  
**Fried Chicken Bucket** each **9.99**

**Sauces**  
**Fried Chicken** 21-oz. pkg. **3.99**

LARGE 15 SIZE  
**California Cantaloupes**  
each **.89**

SUPER SWEET  
**Yellow Corn** 12-oz. can **5.99**

LOW IN CALORIES, SUPER SELECT  
**Fresh Cucumbers** 4 for **.99**

VITAMIN 'C' FRESH  
**ShopRite Tomatoes** 18-oz. pkg. **1.29**

VITAMIN 'C'  
**Green Peppers** lb. **.79**

FRESH CHICORY, ESCAROLE OR  
**Romaine Lettuce** lb. **.59**

U.S. #1  
**Calif. 'A' Potatoes** 5-lb. bag **1.99**

VERY HIGH IN VITAMIN 'C'  
**Green Cabbage** lb. **.25**

VITAMIN 'C' FIRM RED  
**Cherry Tomatoes** pint **.99**

U.S. #1  
**Yellow Onions** 3-lb. bag **1.29**

**The Grocery Place**

OCEAN SPRAY  
**Cranberry Juice Cocktail** 1-gal. bil. **3.99**

ASST. VAR.  
**ShopRite Soda** 12-oz. cans **6.10**

BUTTER FLAVORED, MICROWAVE  
**Jiffy Pop Popcorn** 4 1/2-oz. pkg. **.59**

ShopRite  
**Shredded Wheat** 10-oz. box **.99**

ALL METHOD COFFEE, CUPPET DECAF  
**Chock Full O' Nuts** 13-oz. can **1.99**

ASSORTED VARIETIES  
**Gatorade Drinks** 1-qt. bil. **.79**

ALMOND MILK CHOC. BAR NONE, KIT KAT, REESE CUPS,  
YORK PATIES OR MOUNDS  
**Hershey 6-Pk. Candy** 8.7-oz. pkg. **1.79**

**General Merchandise**

3 SPEED, REVERSIBLE  
MOTOR, MOD. #EB404342  
**42" Ceiling Fan With Light Kit** ea. **24.99**

16" (LIMIT QUANT. WHERE AVAIL.)  
**Oscillating Fan** ea. **24.99**

LOW BOY NETTED  
**Citronella Candle** each **.99**

**ShopRite Coupon**

WITH THIS COUPON  
**Cocktail or Chili Sauce**

**.49**

ShopRite 5-oz. jar  
Limit one. Good at any ShopRite  
Sun. July 29 thru Sat. Aug. 4, 1990.

ENTER SAVE .20

### The MEATING® Place

WITH RIB CAGE, FRESH  
**Perdue Whole Chicken Breast**  
lb. **1.49**

6 THIGHS, 6 WINGS, & 6 DRUMS  
**Perdue 18-Pc. Fryer Parts** lb. **.79**

PERDUE FRESH, WITH RIB CAGE  
**Split Chicken Breast** lb. **1.59**

PERDUE FRESH, SKINLESS AND  
**Boneless Chicken Breast** lb. **3.79**

PERDUE FRESH  
**Ground Chicken** lb. **1.79**

PERDUE FRESH, 5.7 LB. AVG. WITH POP-UP TIMER  
**Oven Stuffer Roasters** lb. **.99**

U.S.D.A. CHOICE BEEF, BONELESS  
**Bottom Round Roast** lb. **1.99**

U.S.D.A. CHOICE BEEF  
**Boneless Rump Roast** lb. **2.19**

U.S.D.A. CHOICE BEEF, BONELESS SEAMED  
**Eye Round Roast** lb. **2.99**

ANY SIZE PKG. NOT LESS THAN 85%  
**Extra Lean Ground Beef** lb. **2.19**

### PERDUE CHICKEN JAMBOREE

GRADE 'A' ANY SIZE PKG.  
WITH THIGHS, FRESH  
**Perdue Whole Chicken Legs**  
lb. **.69**

PERDUE FRESH  
**Wings, Thighs or Drumsticks** lb. **.89**

PERDUE FRESH WHOLE  
**Frying Chickens** lb. **.89**

PERDUE'S SPLIT BREAST, 3 THIGHS, 3 DRUMS  
**Pick of The Chick** lb. **1.29**

PERDUE FRESH CUT UP OR  
**Quartered Fryers** lb. **.99**

PERDUE FRESH  
**Roaster Drumsticks** lb. **.79**

PERDUE FRESH  
**Boneless Roaster Thighs** lb. **1.99**

ON SKEWERS WITH VEGETABLES, STEAK OR  
**Lambque Lamb Kabobs** lb. **3.99**

ON SKEWERS WITH VEGETABLES  
**Pork or Beef Kabobs** lb. **3.99**

9-11 CHOPS, LOIN PORTION  
**Pork Chop Combo** lb. **1.99**

**The Fresh Fish Market**

U.S. GRADE 'A' NEW ENGLAND  
**Fresh Hake Fillet** lb. **2.99**

GREAT GRILLED, BONELESS, STORE SLICED  
**Fresh Yellowfin Tuna Steak** lb. **5.99**

SWEET & TENDER  
**Fresh Small Scallops** lb. **4.99**

**The Appy Place**

STORE SLICED  
**Virginia Brand Ham** lb. **3.99**

STORE SLICED  
**Lorraine Swiss Cheese** lb. **2.49**

DELICIOUS  
**Fresh Shrimp Salad** lb. **3.99**

**The Bakery Place**

CORN, RYE, BLUEBERRY,  
SWEET, WHOLE OR CHOC. CHIP  
**ShopRite Muffins** 12-oz. pkg. **.99**

COUNTRY HEARTH HAMBURGER OR  
**Hot Dog Rolls** 8-pk. 10-oz. pkg. **.64**

HARVEST PRIDE  
**Raisin Bread** 16-oz. loaf **.99**

**VALUABLE COUPON**

WITH THIS COUPON  
**Progresso Olive Oil**

**5.99**

3 QT. 5 OZ. CAN  
Limit one. Good at any ShopRite  
Sun. July 29 thru Sat. Aug. 4, 1990

ENTER SAVE 2.00

**ShopRite Coupon**

WITH THIS COUPON  
**Reg. or Diet Pepsi or Slice**

**.89**

OR CAFF. FREE 2-LTR. BTL.  
Limit one. Good at any ShopRite  
Sun. July 29 thru Sat. Aug. 4, 1990

ENTER SAVE .40

Prices effective in New Jersey, North of Trenton (ex. Montague, N.J.) including Kingston and E. Windsor, N.J.; Rockland & Richmond Counties, N.Y. In order to assure a sufficient supply of sale items for all our customers, we must reserve the right to limit purchase to 4 of any sale items, except where otherwise noted. Not responsible for typographical errors. None sold to other retailers or wholesalers. Artwork does not necessarily represent items on sale. It is for display purposes only. Sunday sales subject to local law laws. Copyright © WAKEFERN FOOD CORPORATION, 1990. Effective Sun. July 29 thru Sat. Aug. 4, 1990.